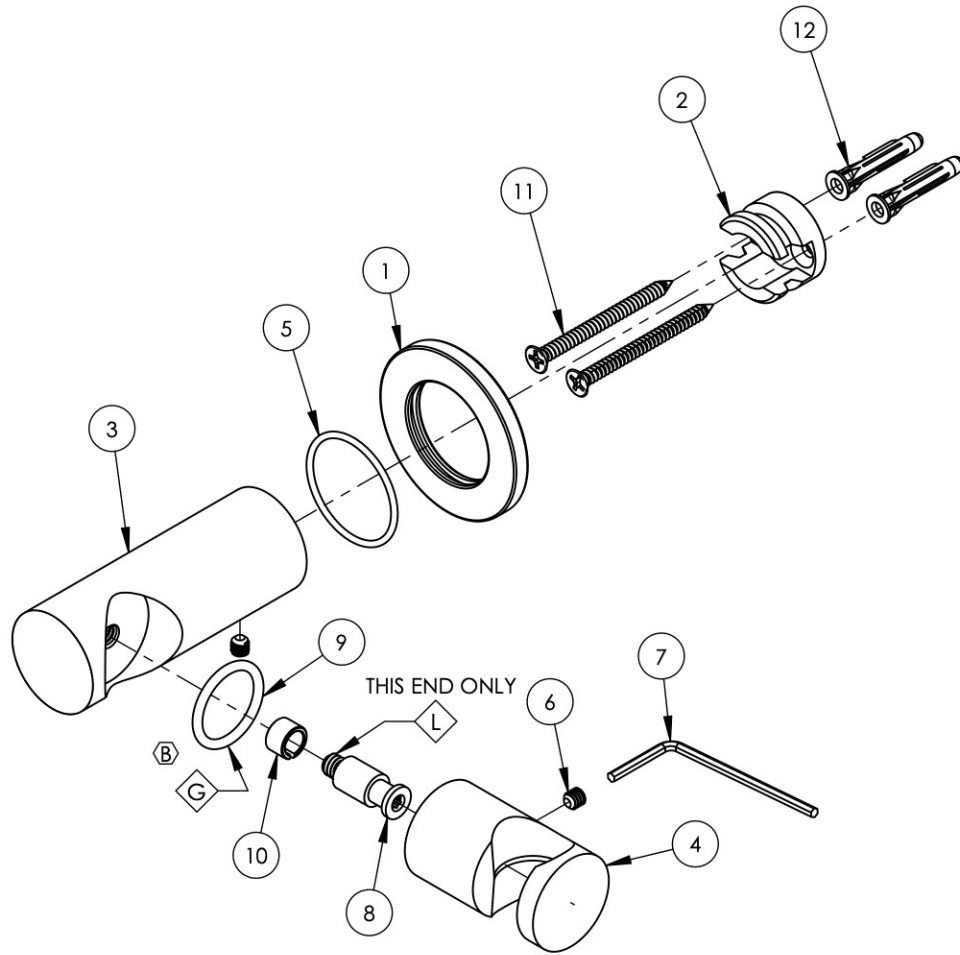


- NOTE(S):
 1. APPLY NSF COMPLIANT GREASE TO O-RING, SEALING JOINTS, AND/OR WEAR AREA **G**
 2. APPLY NSF COMPLIANT LOCTITE TO THREADED AREA **L**

ITEM NO.	PART NUMBER	DESCRIPTION	QTY.
1	10860/00	ESCUTCHEON, FLANGE	1
2	10916	MOUNT, SLIDEBAR FOR HANDSHOWER	1
3	11324/00	HOLDER POST FOR K6530	1
4	11325/00	HUB FOR HOLDER POST, K6530	1
5	90025	O-RING, 1-3/16"ID X 1/16"THK, AS-568-025	1
6	92024	SET SCREW, CUP POINT 10-24UNC 3/16" LENGTH	2
7	92184	HEX L-KEY 3/32" HEX x 2 1/8"L	1
8	92353	INTERNAL POST, HANDSHOWER HOLDER	1
9	90117	O-RING, 7/8"ID X 33/32"THK., AS-568-117	1
10	92354	POST INSERT, PLASTIC	1
11	92234	SCREW FOR WOOD, PHIL, NO. 8 X 1-1/2"L	2
12	92235	ANCHOR FOR DRYWALL, TWIST-ACTION NO. 6-8 SIZE	2



D5	B	CHANGED O-RING TO THICKER SIZE FOR PROPER FITMENT & RESISTANCE	10/21/2020	RAH
ZONE	REV.	DESCRIPTION	DATE	APPROVED

REVISIONS

1261 LOGAN AVENUE
 COSTA MESA, CALIFORNIA 92626
 PHONE: 714.361.4800
 FAX: 714.617.3120



MANUFACTURING

PROPRIETARY AND CONFIDENTIAL

THE INFORMATION CONTAINED IN THIS DRAWING IS THE SOLE PROPERTY OF RSS MANUFACTURING. ANY REPRODUCTION IN PART OR AS A WHOLE WITHOUT THE WRITTEN PERMISSION OF RSS MANUFACTURING IS PROHIBITED.

-	-	INTERPRET GEOMETRIC DIMENSIONING & TOLERANCING IN ACCORDANCE WITH ASME Y14.5-2009 & ASME Y14.41-2003 STANDARDS, UNLESS OTHERWISE SPECIFIED. DIMENSIONS ARE IN INCHES. TOLERANCES ARE:		
NEXT ASSY	USED ON	FRACTIONS ±1/64"	DECIMALS X.X: ±.1 X.XX: ±.01 X.XXX: ±.005	ANGULAR ±.5°
APPLICATION		MATERIAL	NAME	DATE
FINISH		DRAWN	10/12/2015	
DO NOT SCALE DRAWING		CHECKED	GRE	

HOLDER FOR K6530 HAND SHOWER

SIZE	ASM/PRT NO.	REV
A	K6006/00	B

SCALE: 1:2 WEIGHT: lbs. SHEET 1 OF 1

5

4

3

2

1