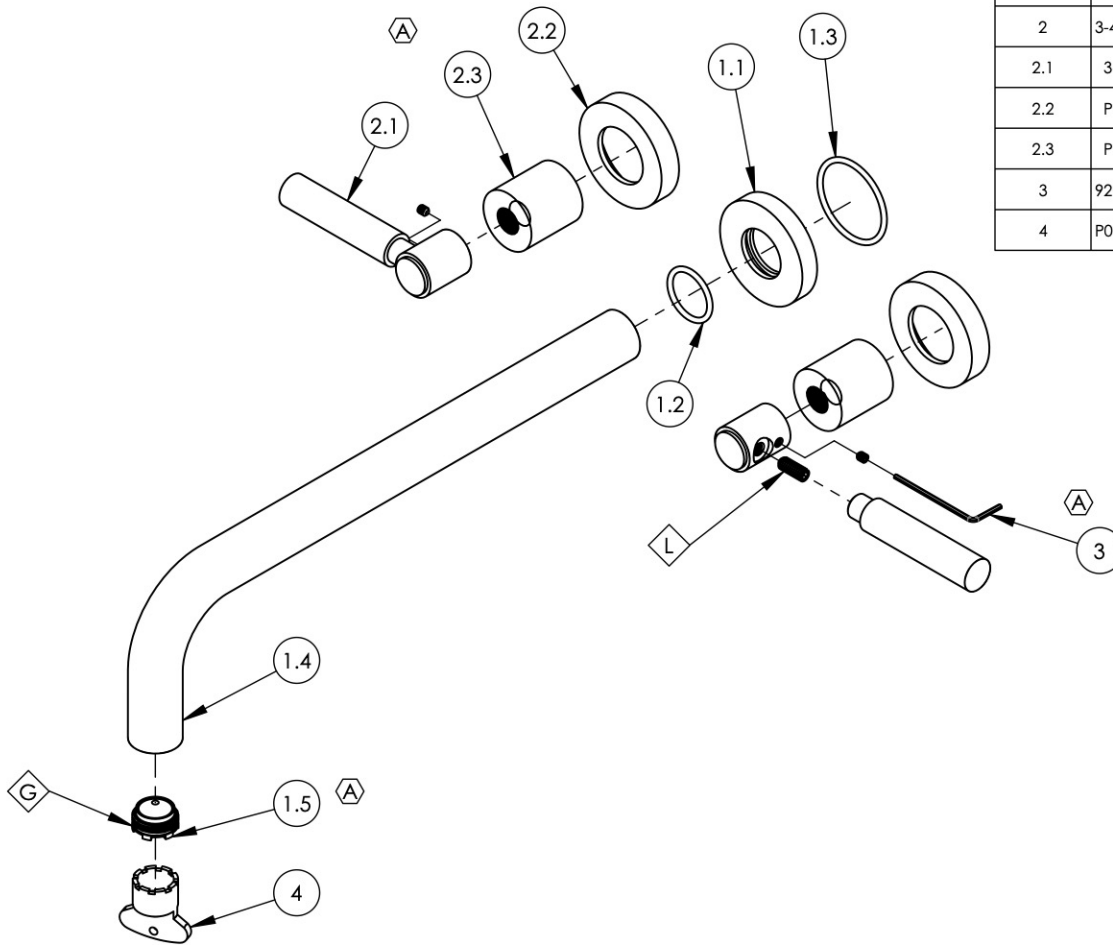


- NOTE(S):
1. PART NUMBER, "/00" DENOTES PART SHALL HAVE FINISH.
  2. APPLY NSF COMPLIANT GREASE TO ANY O-RING, SEALING JOINTS, AND/OR PIVOTAL POINTS.
  3. APPLY NSF COMPLIANT LOCTITE TO THREADED AREA.
  4. ~~APPLY NSF COMPLIANT REMOVABLE (BLUE) LOCTITE TO THREADED AREA.~~
  5. ~~SILVER SOLDER JOINTS SHALL BE FULLY WETTED VIA CAPILLARY ACTION AND COMPLETELY NON-POROUS.~~



ITEM NO.	PART NUMBER	DESCRIPTION	QTY.	
1	3-416/00	ASSY. 12" C-C WALL LAV SPOUT, BASIC	1	
1.1	P19017/00	ESCUTCHEON, FOR SPOUT	1	
1.2	90119	O-RING, 15/16"ID X 1-1/8"OD X 3/32"THK, AS-568-119	1	
1.3	90129	O-RING, 1-9/16"ID X 3/32THK, AS-568-129	1	
1.4	10480/00	12" WALL LAV SPOUT, BASIC SERIES	1	
1.5	11429	AERATOR CACHE JR, 1.2GPM, M21.5X1.0, 42.2260.450	1	
2	3-441/00	ASSY. LEVER HANDLE, BASIC	2	
2.1	3-408/00	ASSY. LEVER HANDLE, BASIC SERIES.	1	
2.2	P02035_2/00	ESCUTCHEON, CONTEMPORARY	1	
2.3	P02035_1/00	HUB ESCUTCHEON, CONTEMPORARY TOP	1	
3	92021	HEX KEY 5/64, FOR 8-32 SET SCREW	1	
4	P05025	AERATOR, BASIC KEY, PLASTIC RED	1	



D4, B5, C3	A	UPDATE HANDLE ASSEMBLY, AERATOR, & HEX KEY	10/28/2021	AMM
ZONE	REV.	DESCRIPTION	DATE	APPROVED
REVISIONS				

1261 LOGAN AVENUE  
COSTA MESA, CALIFORNIA 92626  
PHONE: 714.361.4800  
FAX: 714.617.3120

**PHYLIRICH**<sup>®</sup>  
Defining Luxury Since 1959

**PROPRIETARY AND CONFIDENTIAL**  
THE INFORMATION CONTAINED IN THIS DRAWING IS THE SOLE PROPERTY OF PHYLIRICH. ANY REPRODUCTION IN PART OR AS A WHOLE WITHOUT THE WRITTEN PERMISSION OF PHYLIRICH IS PROHIBITED.  
**DO NOT SCALE DRAWING**

**WALL LAV SET, 12" L W/ LEVER TUBULAR, BASIC, (130-13)**

SIZE <b>A</b>	ASM/PRT NO. <b>DWL130-12/00</b>	REV <b>A</b>
SCALE: 1:3.5	WEIGHT: lbs.	SHEET 1 OF 2