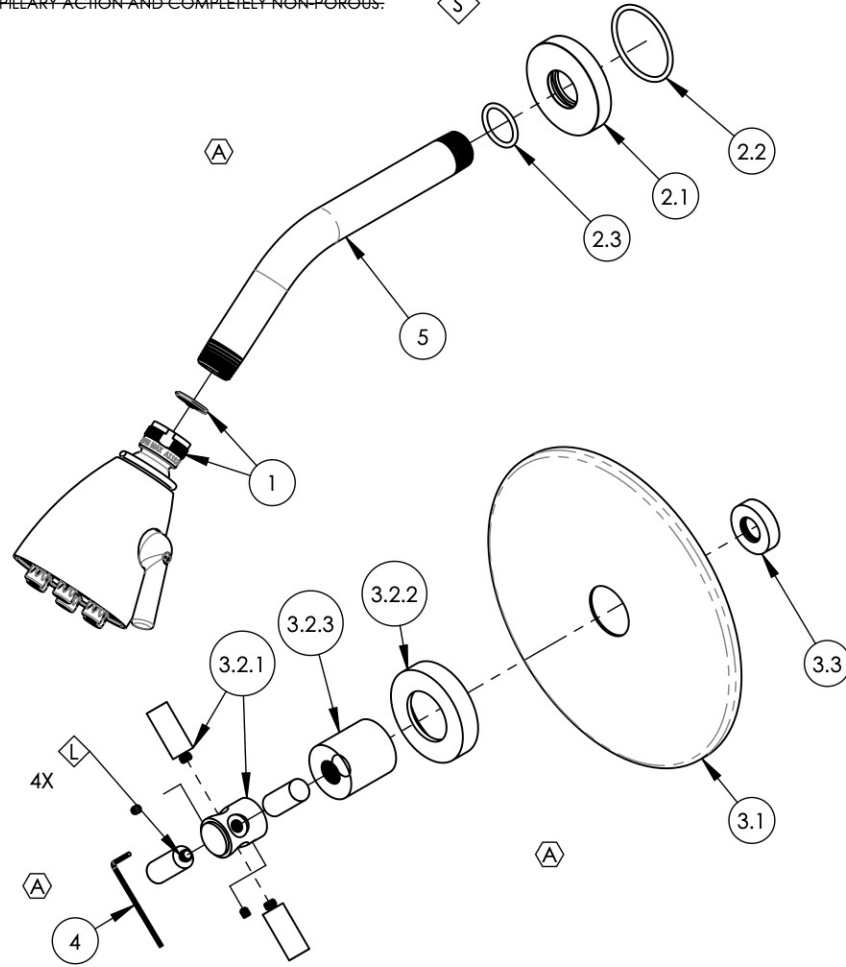


- NOTE(S):
- PART NUMBER, "/00" DENOTES PART SHALL HAVE FINISH.
 - APPLY NSF COMPLIANT GREASE TO ANY O-RING, SEALING JOINTS, AND/OR PIVOTAL POINTS.
 - APPLY NSF COMPLIANT LOCTITE TO THREADED AREA.
 - APPLY NSF COMPLIANT REMOVABLE (BLUE) LOCTITE TO THREADED AREA.
 - SILVER SOLDER JOINTS SHALL BE FULLY WETTED VIA CAPILLARY ACTION AND COMPLETELY NON-POROUS.

G
L
B
S



ITEM NO.	PART NUMBER	DESCRIPTION	QTY.
1	3-018/00	SHOWERHEAD SIX JET	1
2	3-700/00	SHOWER FLANGE, CONTEMPORARY, ROUND	1
2.1	P16019/00	BASE SHOWER FLANGE, BASIC SERIES	1
2.2	90129	O-RING, 1-9/16"ID X 3/32THK, AS-568-129	1
2.3	90117	O-RING, 7/8"ID X 33/32"THK., AS-568-117	1
3	4-022/00	SHOWER TRIM PLATE, SINGLE HANDLE, CROSS TUBULAR, BASIC	1
3.1	P20016/00	TRIM PLATE, BASIC	1
3.2	3-442/00	ASSY, TUBULAR CROSS HANDLE, BASIC	1
3.2.1	3-439/00	ASSY, CROSS HANDLE TUBULAR, BASIC SERIES	1
3.2.2	P02035_2/00	ESCUTCHEON, CONTEMPORARY	1
3.2.3	P02035_1/00	HUB ESCUTCHEON, CONTEMPORARY TOP	1
3.3	11087	SLEEVE FOR PB-THERM PLATE	1
4	92021	HEX KEY 5/64, FOR 8-32 SET SCREW	1
5	P16008/00	SHOWER ARM (8 INCH)	1

ALL	A	UPDATE HEX KEY & DISSOLVE SHOWER ASSY, ADD TRIM PLATE ASSEMBLY	11/3/2021	AMM
ZONE	REV.	DESCRIPTION	DATE	APPROVED
REVISIONS				

1261 LOGAN AVENUE
COSTA MESA, CALIFORNIA 92626
PHONE: 714.361.4800
FAX: 714.617.3120

PHYLIRICH[®]
Defining Luxury Since 1959

PROPRIETARY AND CONFIDENTIAL
THE INFORMATION CONTAINED IN THIS DRAWING IS THE SOLE PROPERTY OF PHYLIRICH. ANY REPRODUCTION IN PART OR AS A WHOLE WITHOUT THE WRITTEN PERMISSION OF PHYLIRICH IS PROHIBITED.
DO NOT SCALE DRAWING

SHOWER TRIM SET, PRESSURE BALANCE, CROSS TUBULAR, BASIC, (131-21)

SIZE A	ASM/PRT NO. DPB3134/00	REV A
SCALE: 1:4	WEIGHT: lbs.	SHEET 1 OF 2