

NOTE(S):
1. PART NUMBER, "/00" DENOTES PART SHALL HAVE FINISH.

2. APPLY NSF COMPLIANT GREASE TO ANY O-RING, SEALING JOINTS, AND/OR PIVOTAL POINTS.

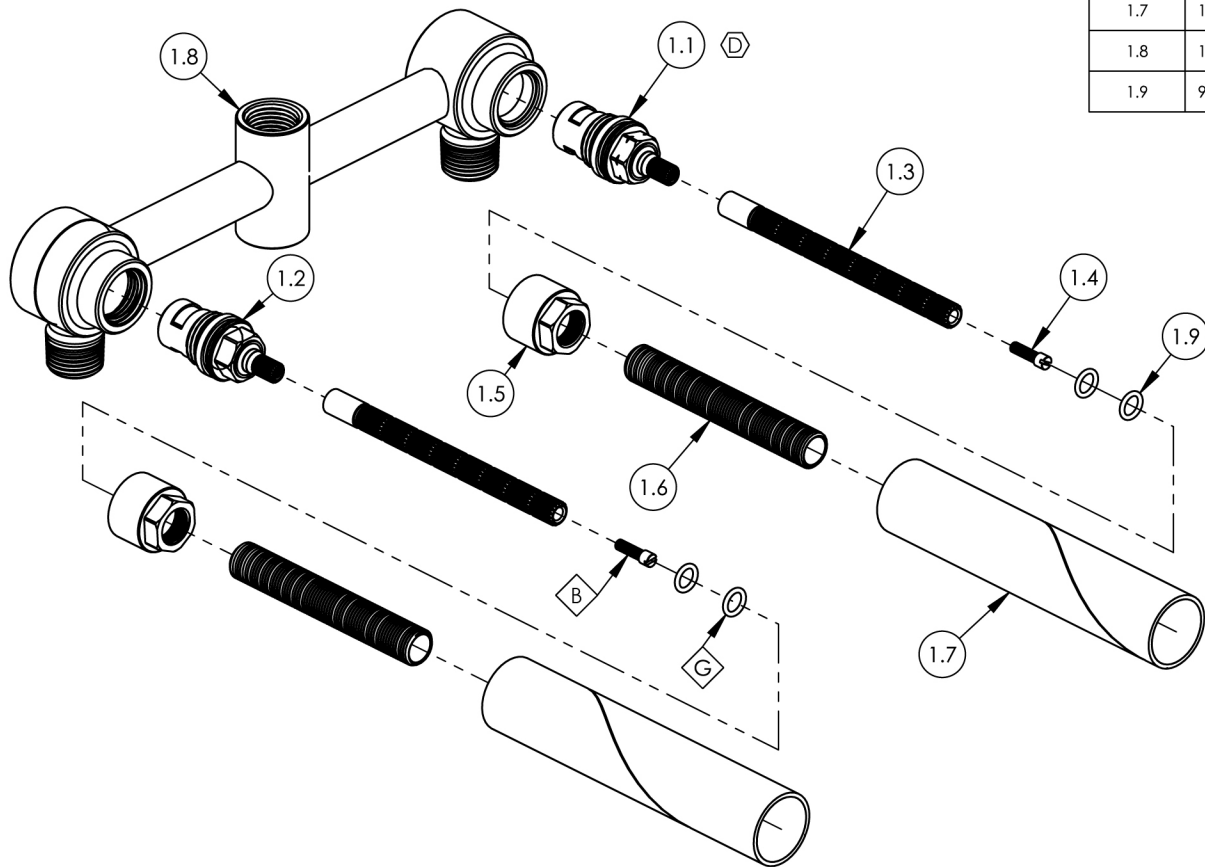
3. APPLY NSF COMPLIANT LOCTITE TO THREADED AREA.

4. APPLY NSF COMPLIANT REMOVABLE (BLUE) LOCTITE TO THREADED AREA.

5. SILVER SOLDER JOINTS SHALL BE FULLY WETTED VIA CAPILLARY ACTION AND COMPLETELY NON POROUS.



ITEM NO.	PART NUMBER	DESCRIPTION	QTY.
1	1-048	VALVE, INWALL TUB-SHOWER	1
1.1	11540	CARTRIDGE, 1/2"G 20PT COLD, HI-TRQ LLL, EXACTO	1
1.2	11541	CARTRIDGE, 1/2"G 20PT HOT, HI-TRQ LLL, EXACTO	1
1.3	10054	STEM EXTENSION, 6" LONG 20PT INT. TO 16PT LONG EXT. BROACH	2
1.4	92157	SCREW, SMALL HD M4X0.7 - 1/2"L	2
1.5	11321	CARTRIDGE RETAINER NUT	2
1.6	10209	SHANK, NIPPLE THREAD ALL 9/16"-20UN WITH .433"ID	2
1.7	11648	MUD GUARD, CARDBOARD, LONG	2
1.8	1-006	VALVE BODY, TUB-SHOWER ONLY, BRAZED	1
1.9	90011	O-RING, 5/16"ID X 1/16"THK, AS-568-011	4



ALL	D	UPDATED COMPONENT	2/19/2025	VA
ZONE	REV.	DESCRIPTION	DATE	APPROVED
REVISIONS				

1261 LOGAN AVENUE
COSTA MESA, CALIFORNIA 92626
PHONE: 714.361.4800
FAX: 714.617.3120

PHYLIRICH®
Defining Luxury Since 1959

PROPRIETARY AND CONFIDENTIAL
THE INFORMATION CONTAINED IN THIS DRAWING
IS THE SOLE PROPERTY OF PHYLIRICH. ANY
REPRODUCTION IN PART OR AS A WHOLE
WITHOUT THE WRITTEN PERMISSION OF PHYLIRICH
IS PROHIBITED.
DO NOT SCALE DRAWING

WALL SHOWER/WALL TUB VALVE

SIZE	ASM/PRT NO.	REV
A	8090536R	D
SCALE: 1:2.75	WEIGHT: lbs.	SHEET 1 OF 2