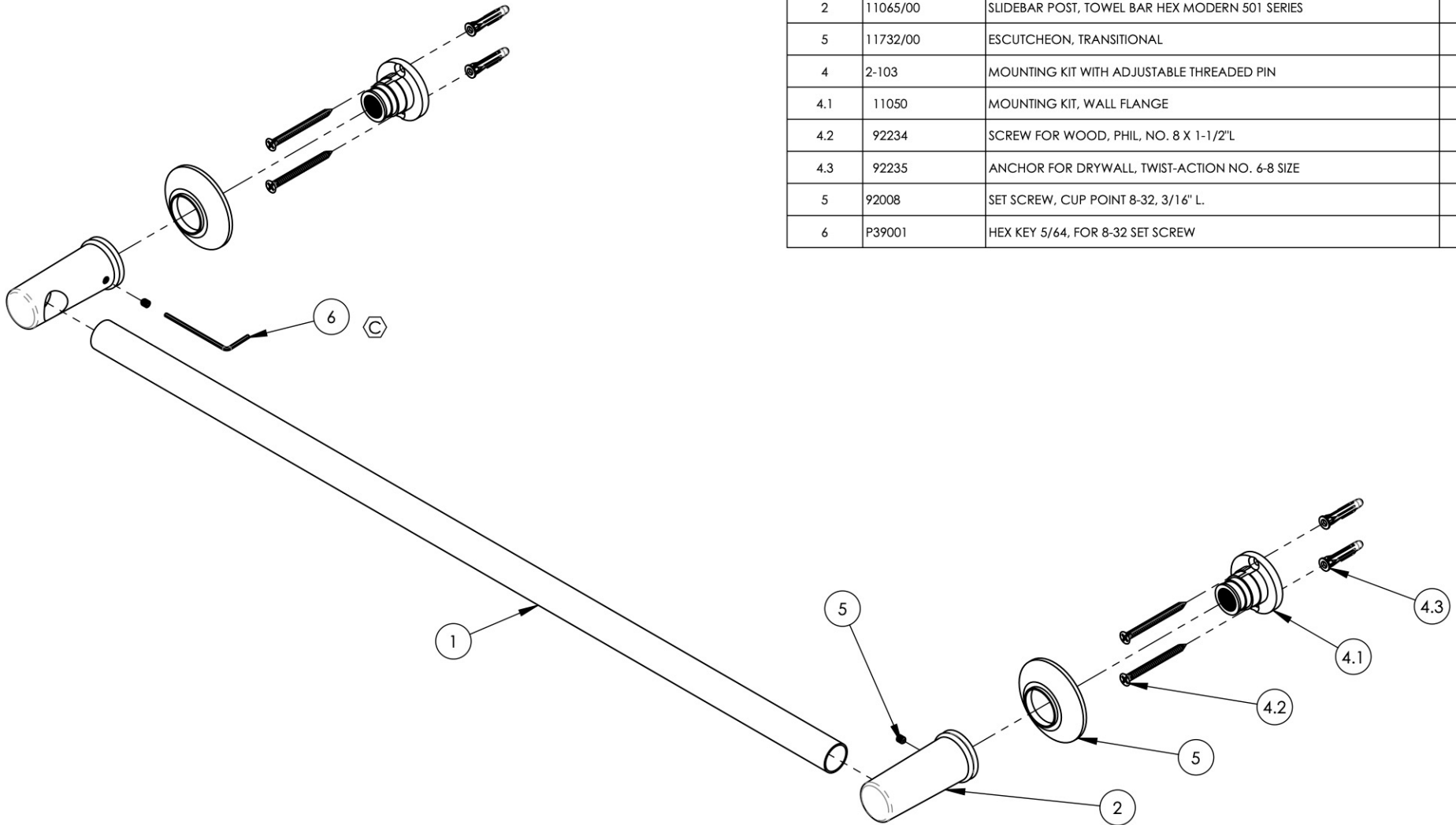


ITEM NO.	PART NUMBER	DESCRIPTION	QTY.
1	10917/00	BAR TUBE, SLIDEBAR FOR HANDSHOWER	1
2	11065/00	SLIDEBAR POST, TOWEL BAR HEX MODERN 501 SERIES	2
5	11732/00	ESCUTCHEON, TRANSITIONAL	2
4	2-103	MOUNTING KIT WITH ADJUSTABLE THREADED PIN	2
4.1	11050	MOUNTING KIT, WALL FLANGE	1
4.2	92234	SCREW FOR WOOD, PHIL. NO. 8 X 1-1/2" L	2
4.3	92235	ANCHOR FOR DRYWALL, TWIST-ACTION NO. 6-8 SIZE	2
5	92008	SET SCREW, CUP POINT 8-32, 3/16" L.	2
6	P39001	HEX KEY 5/64, FOR 8-32 SET SCREW	1



ALL	C	UPDATE TEMPLATE & DWG NAME, ADD HEX KEY	12/10/2019	AMM
ZONE	REV.	DESCRIPTION	DATE	APPROVED
REVISIONS				

1261 LOGAN AVENUE  
COSTA MESA, CALIFORNIA 92626  
PHONE: 714.361.4800  
FAX: 714.617.3120

**PHYLIRICH**<sup>®</sup>  
Defining Luxury Since 1959

**PROPRIETARY AND CONFIDENTIAL**  
THE INFORMATION CONTAINED IN THIS DRAWING IS THE SOLE PROPERTY OF PHYLIRICH. ANY REPRODUCTION IN PART OR AS A WHOLE WITHOUT THE WRITTEN PERMISSION OF PHYLIRICH IS PROHIBITED.

-	-	INTERPRET GEOMETRIC DIMENSIONING & TOLERANCING IN ACCORDANCE WITH ASME Y14.5-2009 & ASME Y14.41-2003 STANDARDS, UNLESS OTHERWISE SPECIFIED. DIMENSIONS ARE IN INCHES. TOLERANCES ARE:		
NEXT ASSY	USED ON	FRACTIONS ±1/16"	DECIMALS X.X: ±.1 X.XX: ±.01 X.XXX: ±.005	ANGULAR ±2°
MATERIAL	APPLICATION	NAME	DATE	
FINISH	DRAWN	MAF	5/22/2014	
<b>DO NOT SCALE DRAWING</b>		CHECKED		

**ACCESSORIES, TOWEL BAR, CENTERS, 24"L, HEX MODERN**

SIZE	ASM/PRT NO.	REV
<b>A</b>	501-71/00	<b>C</b>

SCALE: 1:3.5      WEIGHT: lbs.      SHEET 1 OF 2