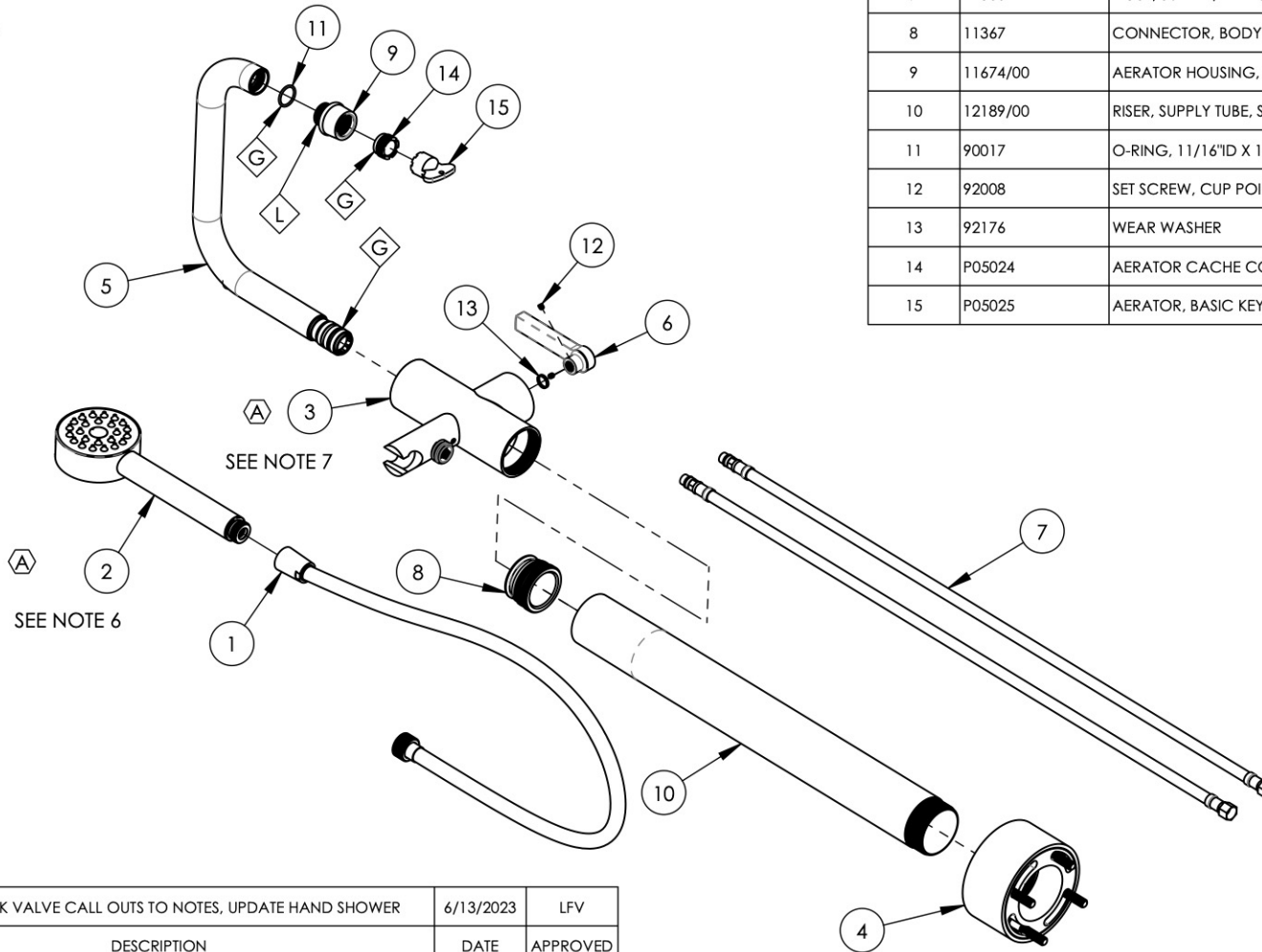


- NOTE(S):  
 1. PART NUMBER, "/00" DENOTES PART SHALL HAVE FINISH.  
 2. APPLY NSF COMPLIANT GREASE TO ANY O-RING, SEALING JOINTS, AND/OR PIVOTAL POINTS.  
 3. APPLY NSF COMPLIANT LOCTITE TO THREADED AREA.  
 4. APPLY NSF COMPLIANT REMOVABLE (BLUE) LOCTITE TO THREADED AREA.  
 5. SILVER SOLDER JOINTS SHALL BE FULLY WETTED VIA CAPILLARY ACTION AND COMPLETELY NON-POROUS.  
 6. HAND SHOWER USES CHECK VALVE "31.4153.0" (10672).  
 7. FLOOR MOUNT MAIN BODY USES CHECK VALVE INSERT "31.4210.0" (12229).

- G
- L
- B
- S

A



ITEM NO.	PART NUMBER	DESCRIPTION	QTY.
1	3-049/00	ASSY, HOSE KIT, HANDSHOWER	1
2	3-782/00	HAND SHOWER, ROUND, SINGLE FUNCTION	1
3	3-503/00	ASSY, MAIN BODY, TUB-FILLER, W/ SHOWER HOOK	1
4	3-504/00	ASSY, BASE, FLOOR MOUNT TUB FILLER	1
5	3-506/00	ASSY, FLAT/LOW SQUARE SPOUT, FLOOR MOUNT TUB FILLER	1
6	11036/00	HANDLE LEVER, CONTEMPORARY 16PT	1
7	11366	HOSE, SUPPLY, FREE STANDING TUB FILLER	2
8	11367	CONNECTOR, BODY TO RISER	1
9	11674/00	AERATOR HOUSING, RT SPOUT, TRANS. HEX MODERN	1
10	12189/00	RISER, SUPPLY TUBE, SHORT	1
11	90017	O-RING, 11/16"ID X 13/16"OD X 1/16"THK, AS-568-017	1
12	92008	SET SCREW, CUP POINT 8-32, 3/16" L.	2
13	92176	WEAR WASHER	1
14	P05024	AERATOR CACHE COIN SLOT, M21.5X1.0 FULL FLOW	1
15	P05025	AERATOR, BASIC KEY, PLASTIC RED	1

ZONE	REV.	DESCRIPTION	DATE	APPROVED
C4, C5, D5	A	ADD CHECK VALVE CALL OUTS TO NOTES. UPDATE HAND SHOWER	6/13/2023	LFV
REVISIONS				

1261 LOGAN AVENUE  
 COSTA MESA, CALIFORNIA 92626  
 PHONE: 714.361.4800  
 FAX: 714.617.3120

**PHYLIRICH**<sup>®</sup>  
 Defining Luxury Since 1959

**PROPRIETARY AND CONFIDENTIAL**  
 THE INFORMATION CONTAINED IN THIS DRAWING IS THE SOLE PROPERTY OF PHYLIRICH. ANY REPRODUCTION IN PART OR AS A WHOLE WITHOUT THE WRITTEN PERMISSION OF PHYLIRICH IS PROHIBITED.  
**DO NOT SCALE DRAWING**

**FLOOR MOUNT TUB FILLER W/  
 HANDSHOWER SET, SINGLE HOLE SHORT,  
 LOW SPOUT W/ LEVER, HEX MODERN**

SIZE <b>A</b>	ASM/PRT NO. <b>501-55-03/00</b>	REV <b>A</b>
SCALE: 1:6.5	WEIGHT: lbs.	SHEET 1 OF 2