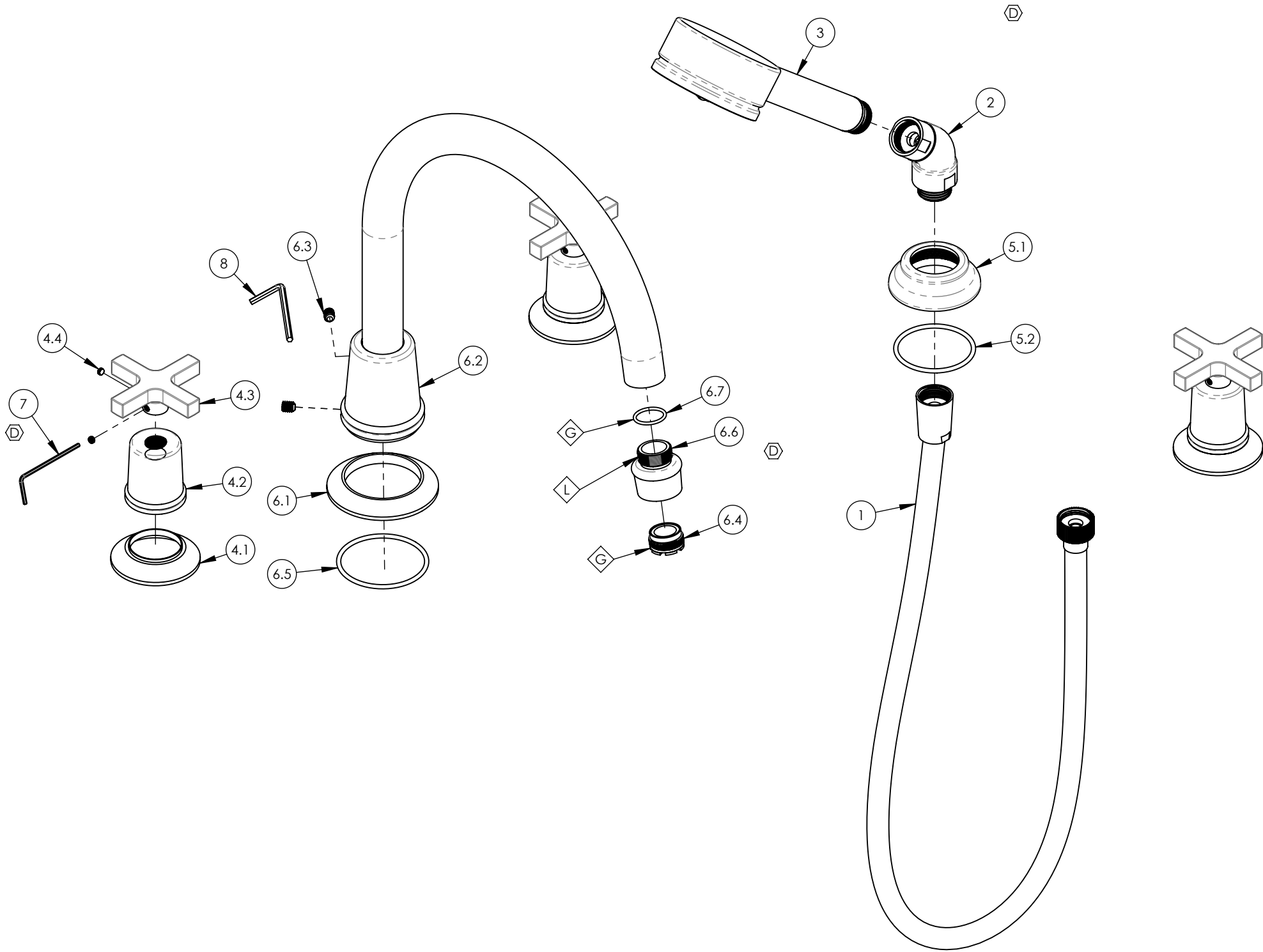


- NOTE(S):
1. PART NUMBER, "/00" DENOTES PART SHALL HAVE FINISH.
 2. APPLY NSF COMPLIANT GREASE TO ANY O-RING, SEALING JOINTS, AND/OR PIVOTAL POINTS.
 3. APPLY NSF COMPLIANT LOCTITE TO THREADED AREA.
 4. APPLY NSF COMPLIANT REMOVABLE (BLUE) LOCTITE TO THREADED AREA.
 5. SILVER SOLDER JOINTS SHALL BE FULLY WETTED VIA CAPILLARY ACTION AND COMPLETELY NON-POROUS.

- G
- L
- B
- S



| ITEM NO. | PART NUMBER | DESCRIPTION | QTY. |
|----------|-------------|--|------|
| 1 | 3-049/00 | ASSY, HOSE KIT, HANDSHOWER | 1 |
| 2 | 3-050/00 | ELBOW ASSEMBLY | 1 |
| 3 | 3-066/00 | HANDSHOWER, SINGLE FUNCTION STILO 70 | 1 |
| 4 | 3-132/00 | CROSS HANDLE, HEX MODERN, 501 SERIES | 3 |
| 4.1 | 10921/00 | ESCUTCHEON, TRANSITIONAL | 1 |
| 4.2 | 10922/00 | HUB, FOR HEX TRANSITIONAL | 1 |
| 4.3 | 10633/00 | HANDLE CROSS, CONTEMPORARY 16PT | 1 |
| 4.4 | 92163 | SET SCREW, CUP PT 8-32 X 1/8"L | 2 |
| 5 | 3-210/00 | ESCUTCHEON BASE, HANDSHOWER, TRADITIONAL | 1 |
| 5.1 | P18001/00 | ESCUTCHEON BASE, DECK TUB, HANDSHOWER, TRAD. | 1 |
| 5.2 | 90133 | 1 3/4"O-RING, 1-13/16ID X 3/32THK, AS-568-133 | 1 |
| 6 | 3-556/00 | ASSY, DECK TUB, LARGE ARC SPOUT | 1 |
| 6.1 | 11684/00 | ESCUTCHEON RT, TRANS. HEX MODERN | 1 |
| 6.2 | 2-281/00 | ASSY, ARC SPOUT, ROMAN TUB, BRAZE, HEX MODERN | 1 |
| 6.3 | 92127 | SET SCREW, CUP PT, 1/4"-20 X 5/16"L, SS | 2 |
| 6.4 | P05024 | AERATOR CACHE COIN SLOT, M21.5X1.0 FULL FLOW | 1 |
| 6.5 | 90137 | O-RING, 2-1/16"ID X 3/32"THK., AS-568-137 | 1 |
| 6.6 | 11674/00 | AERATOR HOUSING, RT SPOUT, TRANS. HEX MODERN | 1 |
| 6.7 | 90017 | O-RING, 11/16"ID X 13/16"OD X 1/16"THK, AS-568-017 | 1 |
| 7 | 92021 | HEX KEY 5/64, FOR 8-32 SET SCREW | 1 |
| 8 | 92216 | HEX L-KEY 1/8" HEX X 2-5/16"L | 1 |

| ALL | D | UPDATE HEX KEY, DISSOLVE HANDSHOWER SUBASSY, UPDATE SPOUT AERATOR ASSY | 11/17/2021 | AMM |
|-----------|------|--|------------|----------|
| ZONE | REV. | DESCRIPTION | DATE | APPROVED |
| REVISIONS | | | | |

1261 LOGAN AVENUE
COSTA MESA, CALIFORNIA 92626
PHONE: 714.361.4800
FAX: 714.617.3120

PHYLIRICH
Defining Luxury Since 1959

PROPRIETARY AND CONFIDENTIAL
THE INFORMATION CONTAINED IN THIS DRAWING IS THE SOLE PROPERTY OF PHYLIRICH. ANY REPRODUCTION IN PART OR AS A WHOLE WITHOUT THE WRITTEN PERMISSION OF PHYLIRICH IS PROHIBITED.
DO NOT SCALE DRAWING

DECK TUB SET W/ HANDSHOWER, ARCH SPOUT, CROSS HANDLES, HEX MODERN

| | | |
|------------------|--------------------------|--------------|
| SIZE B | ASM/PRT NO. 501-50/00 | REV D |
| SCALE: 1:3 | WEIGHT: lbs. | SHEET 1 OF 2 |

