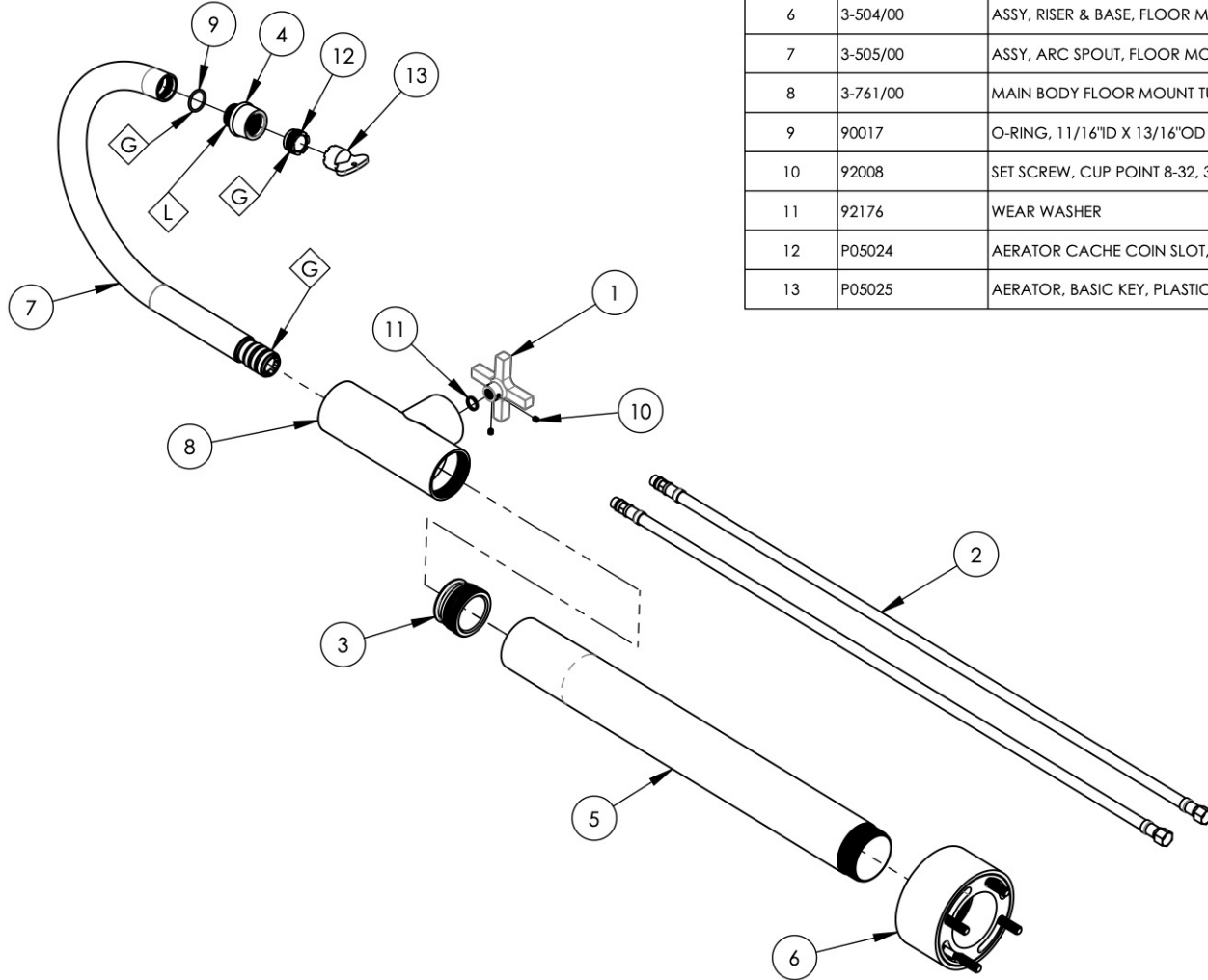


- NOTE(S):
 1. PART NUMBER, "/00" DENOTES PART SHALL HAVE FINISH.
 2. APPLY NSF COMPLIANT GREASE TO ANY O-RING, SEALING JOINTS, AND/OR PIVOTAL POINTS.
 3. APPLY NSF COMPLIANT LOCTITE TO THREADED AREA.
 4. APPLY NSF COMPLIANT REMOVABLE (BLUE) LOCTITE TO THREADED AREA.
 5. SILVER SOLDER JOINTS SHALL BE FULLY WETTED VIA CAPILLARY ACTION AND COMPLETELY NON-POROUS.



ITEM NO.	PART NUMBER	DESCRIPTION	QTY.
1	10633/00	HANDLE CROSS, CONTEMPORARY 16PT	1
2	11366	HOSE, SUPPLY, FREE STANDING TUB FILLER	2
3	11367	CONNECTOR, BODY TO RISER	1
4	11674/00	AERATOR HOUSING, RT SPOUT, TRANS. HEX MODERN	1
5	12189/00	RISER, SUPPLY TUBE, SHORT	1
6	3-504/00	ASSY, RISER & BASE, FLOOR MOUNT TUB FILLER	1
7	3-505/00	ASSY, ARC SPOUT, FLOOR MOUNT TUB FILLER	1
8	3-761/00	MAIN BODY FLOOR MOUNT TUB FILLER, LESS HOOK	1
9	90017	O-RING, 11/16"ID X 13/16"OD X 1/16"THK, AS-568-017	1
10	92008	SET SCREW, CUP POINT 8-32, 3/16" L.	2
11	92176	WEAR WASHER	1
12	P05024	AERATOR CACHE COIN SLOT, M21.5X1.0 FULL FLOW	1
13	P05025	AERATOR, BASIC KEY, PLASTIC RED	1

ZONE	REV.	DESCRIPTION	DATE	APPROVED
------	------	-------------	------	----------

REVISIONS

1261 LOGAN AVENUE
 COSTA MESA, CALIFORNIA 92626
 PHONE: 714.361.4800
 FAX: 714.617.3120

PHYLIRICH[®]
 Defining Luxury Since 1959

PROPRIETARY AND CONFIDENTIAL
 THE INFORMATION CONTAINED IN THIS DRAWING IS THE SOLE PROPERTY OF PHYLIRICH. ANY REPRODUCTION IN PART OR AS A WHOLE WITHOUT THE WRITTEN PERMISSION OF PHYLIRICH IS PROHIBITED.
DO NOT SCALE DRAWING

FLOOR MOUNT TUB FILLER, SINGLE HOLE SHORT, HIGH SPOUT W/ CROSS, HEX MODERN

SIZE A	ASM/PRT NO. 501-46-04/00	REV -
SCALE: 1:6.5	WEIGHT: lbs.	SHEET 1 OF 2