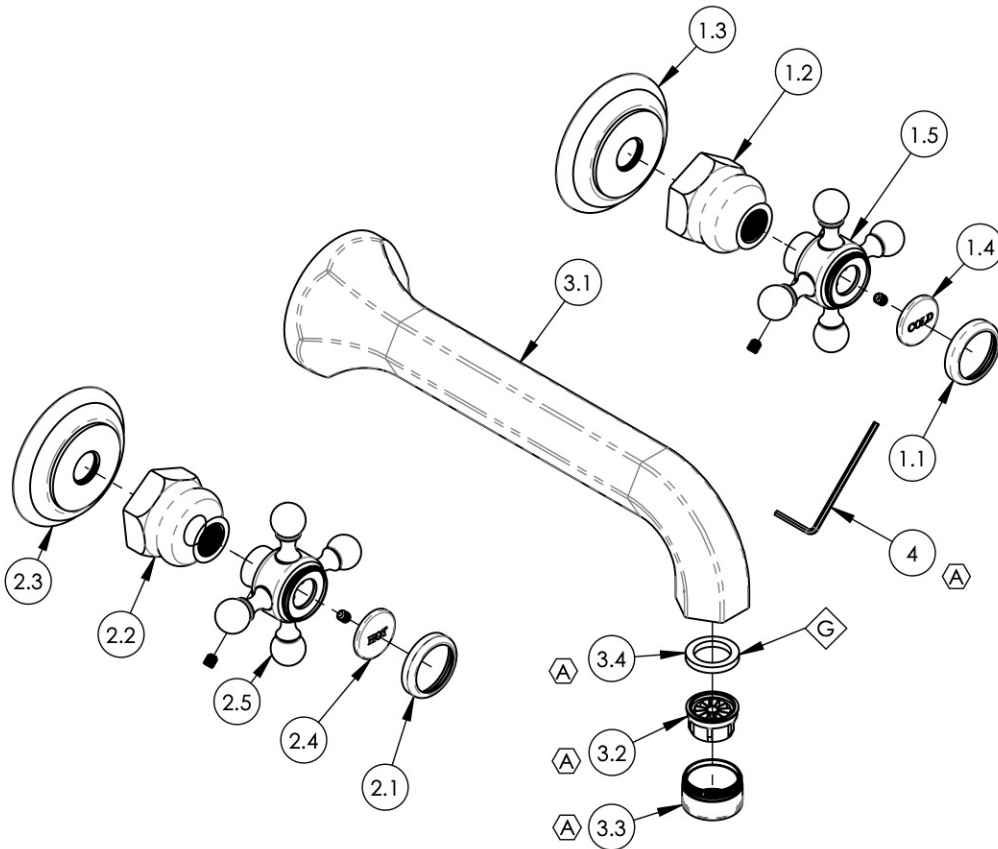


NOTE(S):  
1. APPLY NSF COMPLIANT GREASE TO ANY O-RING,  
SEALING JOINTS, AND/OR PIVOTAL POINTS.



ITEM NO.	PART NUMBER	DESCRIPTION	QTY.
1	3-142C/00	CROSS HANDLE, WALL/SHOWER, 500 SERIES	1
1.1	10538/00	CAP RING FOR 500 SERIES BUTTON	1
1.2	10621/00	BASE HUB NUT	1
1.3	10618/00	ESCUTCHEON, TRADITIONAL 500	1
1.4	11098	PLASTIC BUTTON, COLD	1
1.5	2-180/00	SUB ASSY. CROSS HANDLE HUB	1
2	3-142H/00	CROSS HANDLE, WALL/SHOWER, 500 SERIES	1
2.1	10538/00	CAP RING FOR 500 SERIES BUTTON	1
2.2	10621/00	BASE HUB NUT	1
2.3	10618/00	ESCUTCHEON, TRADITIONAL 500	1
2.4	11099	PLASTIC BUTTON, HOT	1
2.5	2-180/00	SUB ASSY. CROSS HANDLE HUB	1
3	3-147/00	SPOUT, WALL TUB, 500/501 SERIES	1
3.1	10427/00	SPOUT WALL, CAST BRASS, HEX	1
3.2	10721	AERATOR, NEOSTRAHL FULL FLOW	1
3.3	30032/00	AERATOR HOUSING 15/16" MALE HOUSING	1
3.4	30030	RUBBER SEAL WASHER AERATOR, NEOPERL PRT # BW.7110.1	1
4	P39001	HEX KEY 5/64, FOR 8-32 SET SCREW	1

ALL	REV.	DESCRIPTION	DATE	APPROVED
A	A	UPDATE NAME, TEMPLATE, SPOUT ASSY, ADD HEX KEY	12/26/2019	AMM
REVISIONS				

1261 LOGAN AVENUE  
COSTA MESA, CALIFORNIA 92626  
PHONE: 714.361.4800  
FAX: 714.617.3120

**PHYLIRICH**<sup>®</sup>  
Defining Luxury Since 1959

**PROPRIETARY AND CONFIDENTIAL**  
THE INFORMATION CONTAINED IN THIS DRAWING IS THE SOLE PROPERTY OF PHYLIRICH. ANY REPRODUCTION IN PART OR AS A WHOLE WITHOUT THE WRITTEN PERMISSION OF PHYLIRICH IS PROHIBITED.

-	-	INTERPRET GEOMETRIC DIMENSIONING & TOLERANCING IN ACCORDANCE WITH ASME Y14.5-2009 & ASME Y14.41-2003 STANDARDS, UNLESS OTHERWISE SPECIFIED. DIMENSIONS ARE IN INCHES. TOLERANCES ARE:		
NEXT ASSY	USED ON	<b>FRACTIONS</b> ±1/16"	<b>DECIMALS</b> X.X: ±.1 X.XX: ±.01 X.XXX: ±.005	<b>ANGULAR</b> ±2°
MATERIAL	APPLICATION	NAME	DATE	
FINISH	DRAWN	LLO	9/9/2015	
<b>DO NOT SCALE DRAWING</b>		CHECKED	GRE	

**WALL TUB SET, CROSS, HEX TRADITIONAL**

SIZE	ASM/PRT NO.	REV
<b>A</b>	500-56/00	<b>A</b>
SCALE: 1:3	WEIGHT: lbs.	SHEET 1 OF 2