

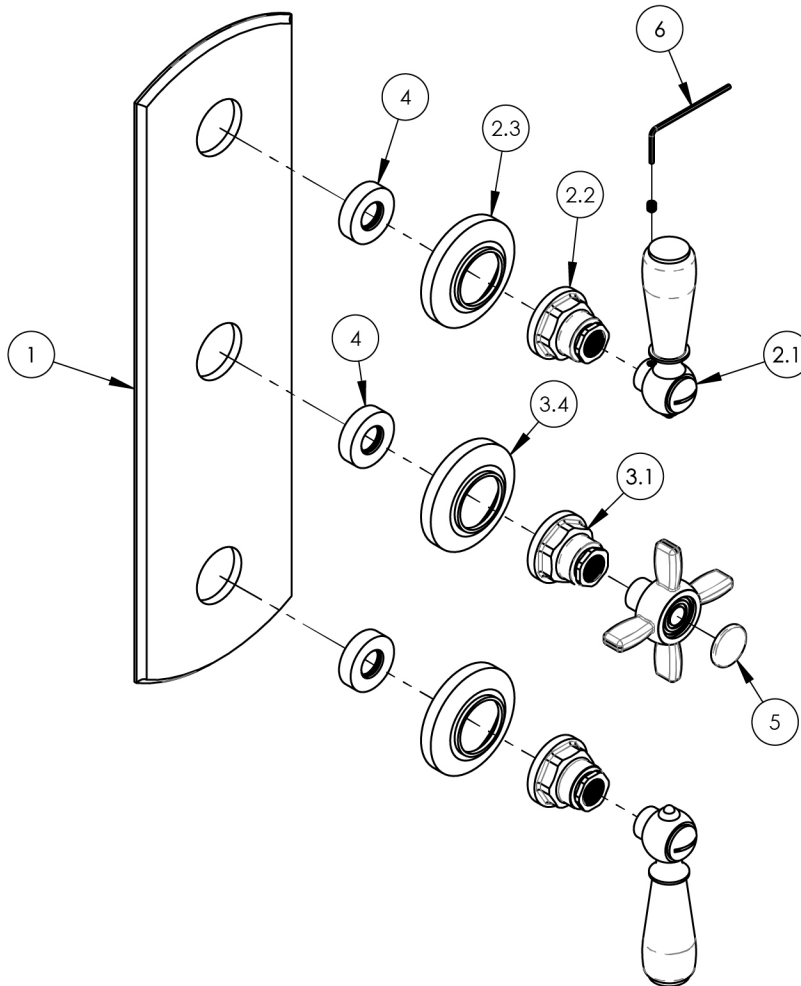
NOTE(S):
1. PART NUMBER, "/00" DENOTES PART SHALL HAVE FINISH.

2. APPLY NSF COMPLIANT GREASE TO ANY O-RING, SEALING JOINTS, AND/OR PIVOTAL POINTS.

3. APPLY NSF COMPLIANT LOCTITE TO THREADED AREA.

4. APPLY NSF COMPLIANT REMOVABLE (BLUE) LOCTITE TO THREADED AREA.

5. SILVER SOLDER JOINTS SHALL BE FULLY WETTED VIA CAPILLARY ACTION AND COMPLETELY NON-POROUS.



ITEM NO.	PART NUMBER	DESCRIPTION	QTY.
1	12473/00	TRIM PLATE, THREE HOLE	1
2	3-865/00	LEVER HANDLE, WIDESPREAD/SHOWER	2
2.1	3-859/00	LEVER HANDLE W/ BROACH	1
2.2	12469/00	HUB SHORT, CROSS HANDLE, WIDESPREAD LAV	1
2.3	12474/00	ESCUTCHEON, CROSS & LEVER HANDLES	1
3	3-863/00	CROSS HANDLE, WIDESPREAD/SHOWER	1
3.1	12469/00	HUB SHORT, CROSS HANDLE, WIDESPREAD LAV	1
3.2	30608/00	LAV CROSS HANDLE, FORGED, 16TH ST	1
3.3	92163	SET SCREW, CUP PT 8-32 X 1/8"L	1
3.4	12474/00	ESCUTCHEON, CROSS & LEVER HANDLES	1
4	11087	SLEEVE FOR PB-THERM PLATE	3
5	12472/00	BRASS BUTTON, BLANK	1
6	92021	HEX KEY 5/64, FOR 8-32 SET SCREW	1

ZONE	REV.	DESCRIPTION	DATE	APPROVED
------	------	-------------	------	----------

REVISIONS

1261 LOGAN AVENUE
COSTA MESA, CALIFORNIA 92626
PHONE: 714.361.4800
FAX: 714.617.3120

PHYLIRICH
Defining Luxury Since 1959

PROPRIETARY AND CONFIDENTIAL
THE INFORMATION CONTAINED IN THIS DRAWING
IS THE SOLE PROPERTY OF PHYLIRICH. ANY
REPRODUCTION IN PART OR AS A WHOLE
WITHOUT THE WRITTEN PERMISSION OF PHYLIRICH
IS PROHIBITED.
DO NOT SCALE DRAWING

THERM, SHOWER TRIM, THREE HANDLE
LEVER

SIZE	ASM/PRT NO.	REV
A	4-740/00	-
SCALE: 1:8	WEIGHT: lbs.	SHEET 1 OF 2