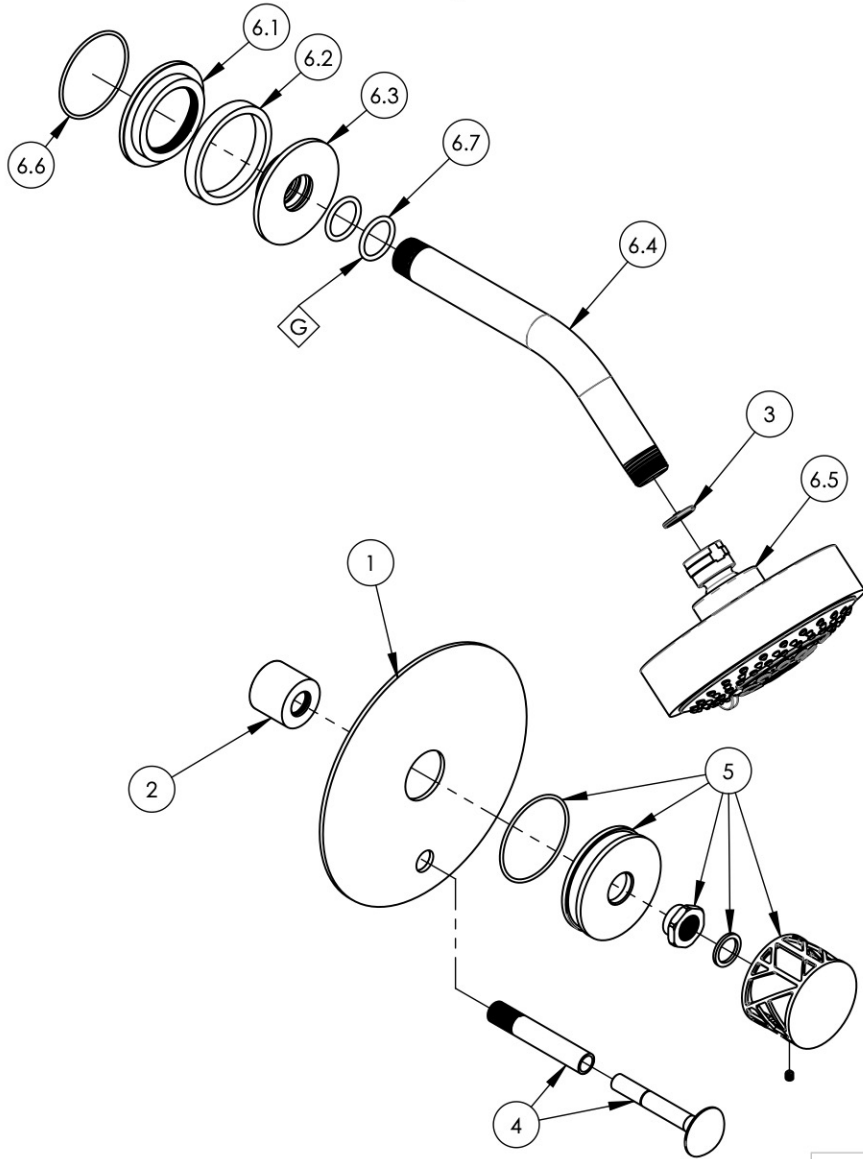


NOTE(S):  
 1. APPLY NSF COMPLIANT GREASE TO ANY O-RING, SEALING JOINTS, AND/OR PIVOTAL POINTS.



ITEM NO.	PART NUMBER	DESCRIPTION	QTY.
1	10445/00	TRIM PLATE 6" ROUND W/ DIVERTER HOLE, BASIC II	1
2	11087	SLEEVE FOR PB-THERM PLATE	1
3	11432	1.75 GPM FLOW REGULATOR	1
4	3-125/00	EXTENSION ASSY FOR PB TUB & SHOWER SET	1
5	3-605/00	ASSY, ROUND HANDLE & BASE, CAGE DESIGN, JOLIE	1
6	4-594/00	ASSY, FLANGE, SHOWER ARM, SHOWER HEAD, ROUND, JOLIE	1
6.1	11813/00	BASE, BOTTOM,	1
6.2	11812/00	CENTER RING, BASE	1
6.3	11907/00	FLANGE COVER, SHOWER ARM, ROUND, JOLIE	1
6.4	P16008/00	SHOWER ARM (8 INCH)	1
6.5	3-454/00	SHOWER HEAD MULTI. FUNC. CONTEMP.	1
6.6	90032	O-RING, 1-7/8"ID X 2"OD X 1/16"THK., AS-568-032	1
6.7	90117	O-RING, 7/8"ID X 33/32"THK., AS-568-117	2

ZONE	REV.	DESCRIPTION	DATE	APPROVED
REVISIONS				

1261 LOGAN AVENUE  
 COSTA MESA, CALIFORNIA 92626  
 PHONE: 714.361.4800  
 FAX: 714.617.3120

**PHYLIRICH**<sup>®</sup>  
 Defining Luxury Since 1959

**PROPRIETARY AND CONFIDENTIAL**  
 THE INFORMATION CONTAINED IN THIS DRAWING IS THE SOLE PROPERTY OF PHYLIRICH. ANY REPRODUCTION IN PART OR AS A WHOLE WITHOUT THE WRITTEN PERMISSION OF PHYLIRICH IS PROHIBITED.

-	-	INTERPRET GEOMETRIC DIMENSIONING & TOLERANCING IN ACCORDANCE WITH ASME Y14.5-2009 & ASME Y14.41-2003 STANDARDS, UNLESS OTHERWISE SPECIFIED. DIMENSIONS ARE IN INCHES. TOLERANCES ARE:		
NEXT ASSY	USED ON	<b>FRACTIONS</b> ±1/16"	<b>DECIMALS</b> X.X: ±.1 X.XX: ±.01 X.XXX: ±.005	<b>ANGULAR</b> ±2°
APPLICATION		MATERIAL	NAME	DATE
FINISH		DRAWN	AMM	4/1/2020
<b>DO NOT SCALE DRAWING</b>		CHECKED	AMM	4/1/2020

**SHOWER TRIM SET, PB DIVERTED, ROUND (LESS TUB SPOUT), JOLIE**

SIZE **A** ASM/PRT NO. **4-677/00** REV

SCALE: 1:4 WEIGHT: lbs. SHEET 1 OF 2