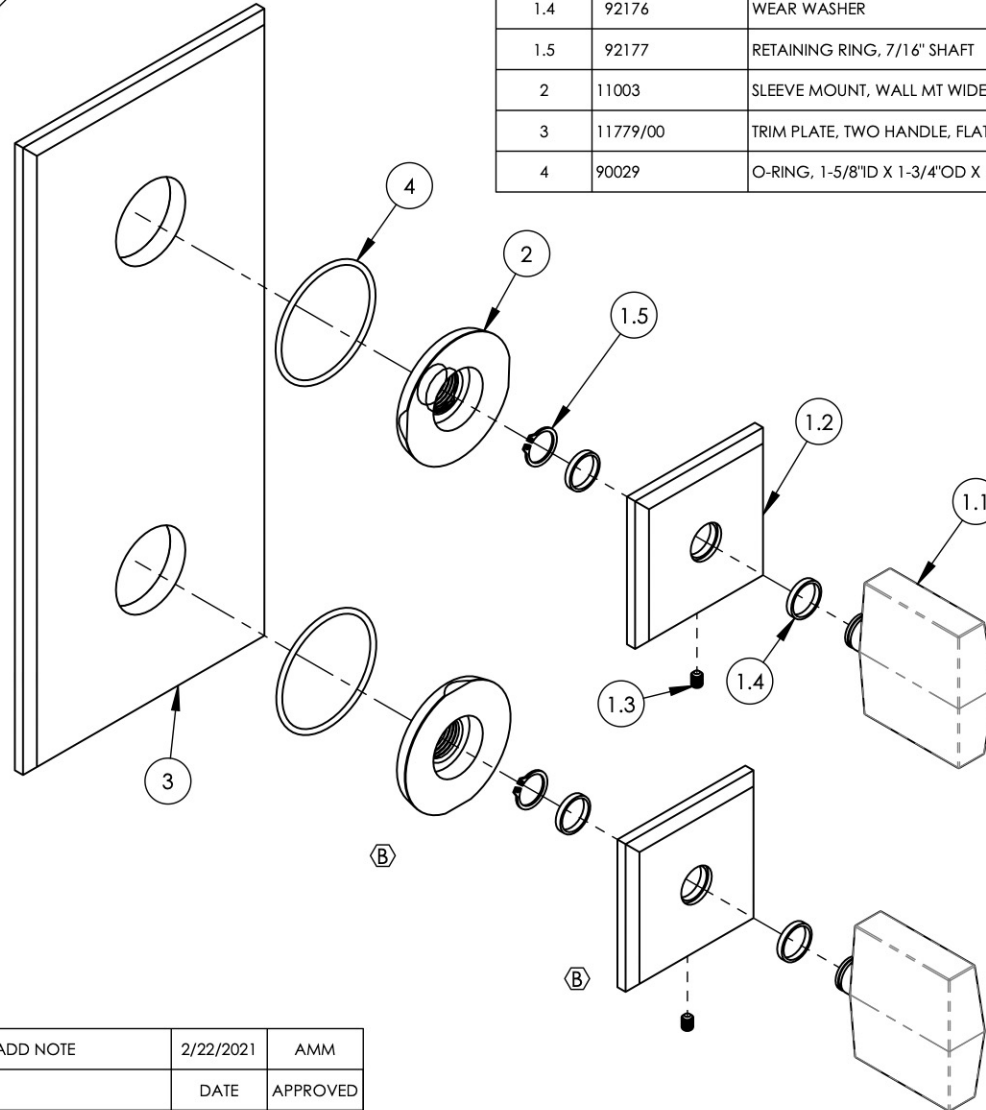


- NOTE(S):  
 1. PART NUMBER, "/00" DENOTES PART SHALL HAVE FINISH.  
 2. APPLY NSF COMPLIANT GREASE TO ANY O-RING, SEALING JOINTS, AND/OR PIVOTAL POINTS.  
 3. APPLY NSF COMPLIANT LOCTITE TO THREADED AREA.  
 4. APPLY NSF COMPLIANT REMOVABLE (BLUE) LOCTITE TO THREADED AREA.  
 5. SILVER SOLDER JOINTS SHALL BE FULLY WETTED VIA CAPILLARY ACTION AND COMPLETELY NON-POROUS.  
 6. FOR DEEPEER ESCUTCHEON:  
 • 3-601/00  
 • 92401



ITEM NO.	PART NUMBER	DESCRIPTION	QTY.
1	3-595/00	ASSY, BLADE HANDLE, DIAMA	2
1.1	11762/00	BLADE HANDLE, DIAMA	1
1.2	11764/00	ESCUTCHEON, HANDLE, DIAMA	1
1.3	92005	SET SCREW, CUP PT 6-32 UNC THREAD 3/16"L	1
1.4	92176	WEAR WASHER	2
1.5	92177	RETAINING RING, 7/16" SHAFT	1
2	11003	SLEEVE MOUNT, WALL MT WIDESPREAD	2
3	11779/00	TRIM PLATE, TWO HANDLE, FLAT, DIAMA	1
4	90029	O-RING, 1-5/8"ID X 1-3/4"OD X 1/16"THK, AS-568-029	2



ZONE	REV.	DESCRIPTION	DATE	APPROVED
B3, D5	B	UPDATE SLEEVE MOUNT & HANDLE ASSY, ADD NOTE	2/22/2021	AMM
REVISIONS				

1261 LOGAN AVENUE  
 COSTA MESA, CALIFORNIA 92626  
 PHONE: 714.361.4800  
 FAX: 714.617.3120

**PHYL RICH**<sup>®</sup>  
 Defining Luxury Since 1959

**PROPRIETARY AND CONFIDENTIAL**  
 THE INFORMATION CONTAINED IN THIS DRAWING IS THE SOLE PROPERTY OF PHYL RICH. ANY REPRODUCTION IN PART OR AS A WHOLE WITHOUT THE WRITTEN PERMISSION OF PHYL RICH IS PROHIBITED.  
**DO NOT SCALE DRAWING**

**THERM, SHOWER TRIM, TWO HANDLE-BLADE, DIAMA**

SIZE <b>A</b>	ASM/PRT NO. <b>4-567/00</b>	REV <b>B</b>
SCALE: 1:2.25	WEIGHT: lbs.	SHEET 1 OF 2