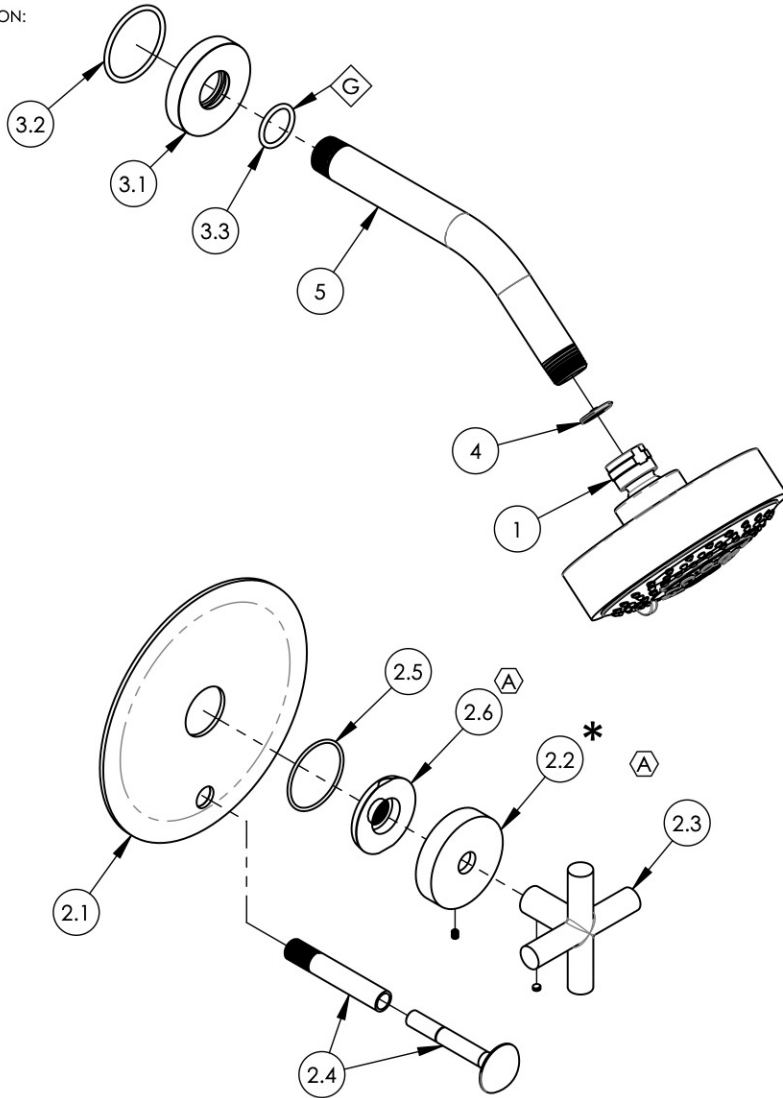


NOTE(S):
1. PART NUMBER, "/00" DENOTES PART SHALL HAVE FINISH.

2. APPLY NSF COMPLIANT GREASE TO ANY O-RING, SEALING JOINTS, AND/OR PIVOTAL POINTS.

3. FOR DEEPER ESCUTCHEON:

- A. 3-353/00
- B. 92401



ITEM NO.	PART NUMBER	DESCRIPTION	QTY.
1	3-454/00	SHOWER HEAD MULTI. FUNC. CONTEMP.	1
2	4-596/00	SHOWER TRIM PLATE, PRESSURE BALANCE DIVERTED, CROSS, TRANSITION	1
2.1	10445/00	TRIM PLATE 6" ROUND W/ DIVERTER HOLE, BASIC II	1
* 2.2	3-590/00	ESCUTCHEON W/ SET SCREW, TRANSITION	1
2.3	3-580/00	HANDLE CROSS W/ SET SCREW, TRANSITION	1
2.4	3-125/00	DIVERTER EXTENSION ASSY FOR PB TUB & SHOWER SET	1
2.5	90029	O-RING, 1-5/8"ID X 1-3/4"OD X 1/16"THK, AS-568-029	1
2.6	11003	SLEEVE MOUNT, WALL MT WIDESPREAD	1
3	811/00	SHOWER FLANGE, CONTEMPORARY, ROUND	1
3.1	P16019/00	BASE SHOWER FLANGE, BASIC SERIES	1
3.2	90129	O-RING, 1-9/16"ID X 3/32THK, AS-568-129	1
3.3	90117	O-RING, 7/8"ID X 33/32THK., AS-568-117	1
4	11432	1.75 GPM FLOW REGULATOR	1
5	P16008/00	SHOWER ARM (8 INCH)	1

ZONE	REV.	DESCRIPTION	DATE	APPROVED
C3, E5	A	UPDATE SLEEVE MOUNT & ESCUTCHEON HUB, ADD NOTES	3/13/2020	AMM
REVISIONS				

1261 LOGAN AVENUE
COSTA MESA, CALIFORNIA 92626
PHONE: 714.361.4800
FAX: 714.617.3120

PHYLIRICH[®]
Defining Luxury Since 1959

PROPRIETARY AND CONFIDENTIAL
THE INFORMATION CONTAINED IN THIS DRAWING IS THE SOLE PROPERTY OF PHYLIRICH. ANY REPRODUCTION IN PART OR AS A WHOLE WITHOUT THE WRITTEN PERMISSION OF PHYLIRICH IS PROHIBITED.

INTERPRET GEOMETRIC DIMENSIONING & TOLERANCING IN ACCORDANCE WITH ASME Y14.5-2009 & ASME Y14.41-2003 STANDARDS, UNLESS OTHERWISE SPECIFIED. DIMENSIONS ARE IN INCHES. TOLERANCES ARE:	FRACTIONS ±1/16"	DECIMALS X.X: ±.1 X.XX: ±.01 X.XXX: ±.005	ANGULAR ±2°
NEXT ASSY	USED ON		
APPLICATION			
MATERIAL	NAME	DATE	
FINISH	DRAWN	AMM	12/5/2019
DO NOT SCALE DRAWING	CHECKED		

PB SHOWER & DIVERTER SET, CROSS HANDLE (LESS TUB SPOUT), TRANSITION

SIZE **A** ASM/PRT NO. **4-087/00** REV **A**

SCALE: 1:4 WEIGHT: lbs. SHEET 1 OF 2