

NOTE(S):
1. PART NUMBER, "/00" DENOTES PART SHALL HAVE FINISH.

2. APPLY NSF COMPLIANT GREASE TO ANY O-RING, SEALING JOINTS, AND/OR PIVOTAL POINTS.

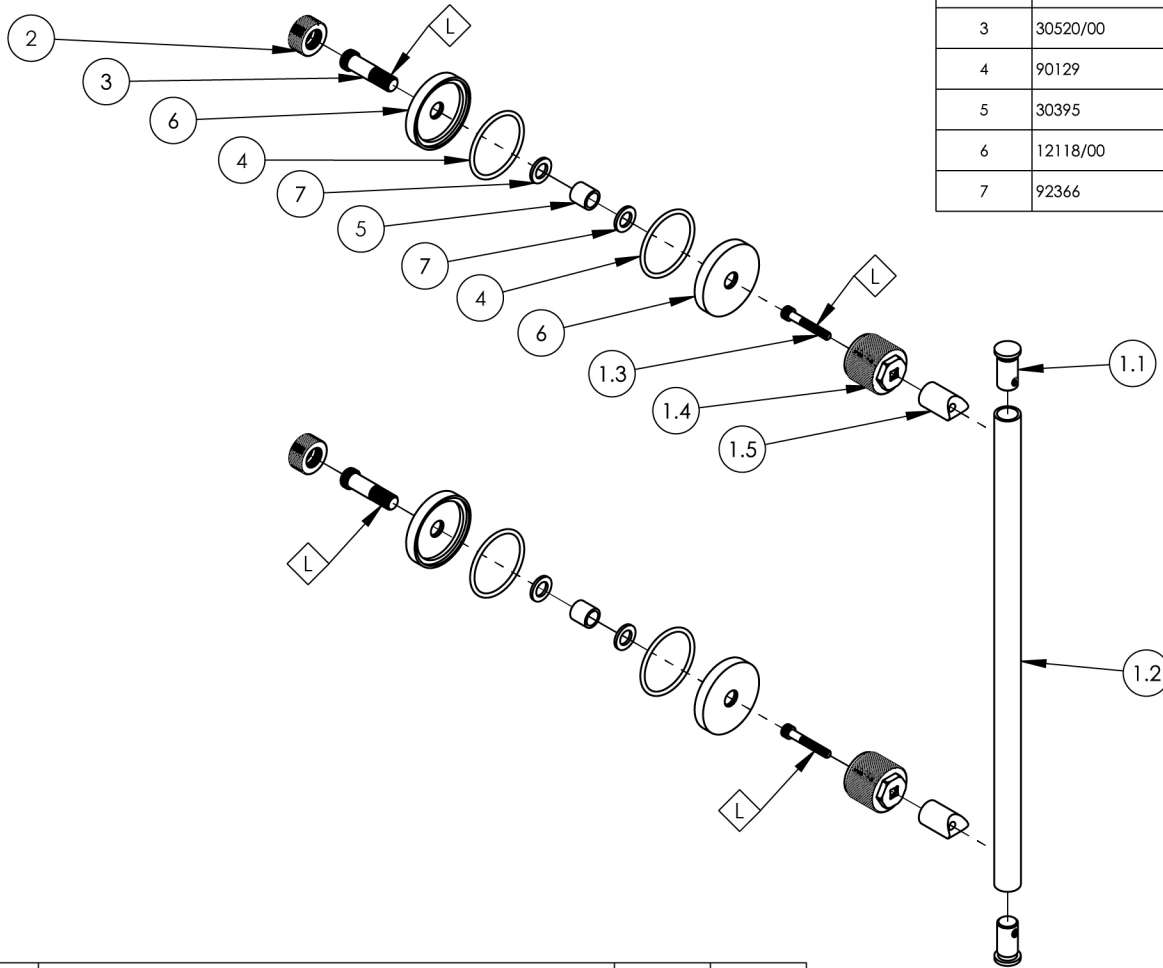
3. APPLY NSF COMPLIANT LOCTITE TO THREADED AREA.

4. APPLY NSF COMPLIANT REMOVABLE (BLUE) LOCTITE TO THREADED AREA.

5. SILVER SOLDER JOINTS SHALL BE FULLY WETTED VIA CAPILLARY ACTION AND COMPLETELY NON-POROUS.



ITEM NO.	PART NUMBER	DESCRIPTION	QTY.	
1	3-710/00	HANDLE, SHOWER DOOR PULL, 12" C-C, KNURLED, DUSTRIE	1	
1.1	11958/00	END CAP, ACCESSORIES, TRANSITION II	2	
1.2	12137/00	TUBE, SHOWER PULL, 12" C2C, DUSTRIE	1	
1.3	92476	SCREW, SS, SOCKET HEAD, 10-24 X 1-1/4" L	2	
1.4	12124/00	ESCUTCHEON HUB, OUTSIDE, SHOWER DOOR PULL KNURLED, DUSTRIE	2	
1.5	11960/00	POST EXTENSION, ACCESSORIES, TRANSITION II	2	
2	12122/00	END CAP, SHOWER DOOR PULL, KNURLED, DUSTRIE	2	
3	30520/00	PIN THRU GLASS, ENDCAP SHOWER ENCLOSURE PULL, SALE GALLERY	2	
4	90129	O-RING, 1-9/16"ID X 3/32THK, AS-568-129	4	
5	30395	CLEAR TUBE, UV-RESISTANT PVC	2	
6	12118/00	ESCUTCHEON BASE, SHOWER DOOR PULL, DUSTRIE	4	
7	92366	WASHER, CLEAR PLASTIC, .384 ID X .640 OD	4	



ZONE	REV.	DESCRIPTION	DATE	APPROVED
REVISIONS				

1261 LOGAN AVENUE
COSTA MESA, CALIFORNIA 92626
PHONE: 714.361.4800
FAX: 714.617.3120

PHYLIRICH
Defining Luxury Since 1959

PROPRIETARY AND CONFIDENTIAL
THE INFORMATION CONTAINED IN THIS DRAWING
IS THE SOLE PROPERTY OF PHYLIRICH. ANY
REPRODUCTION IN PART OR AS A WHOLE
WITHOUT THE WRITTEN PERMISSION OF PHYLIRICH
IS PROHIBITED.
DO NOT SCALE DRAWING

SHOWER DOOR PULL, 12", SINGLE,
KNURLED, DUSTRIE

SIZE A	ASM/PRT NO. 371-94-12/00	REV -
SCALE: 1:8	WEIGHT: lbs.	SHEET 1 OF 2