

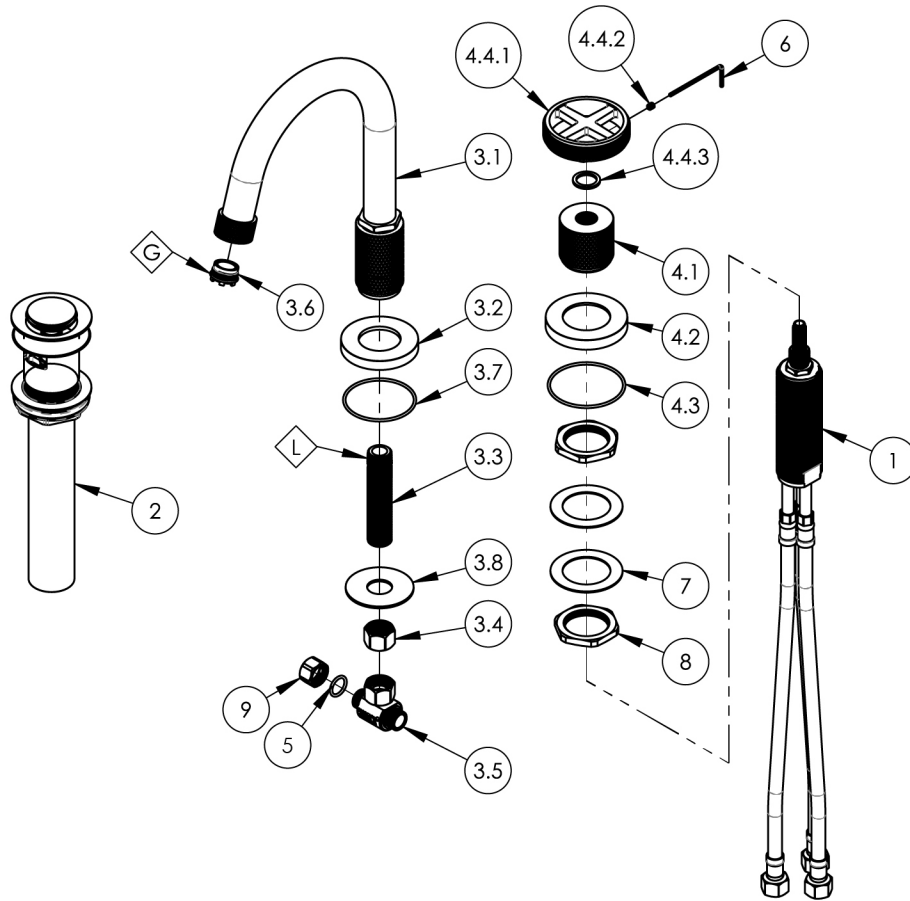
NOTE(S):
1. PART NUMBER, "/00" DENOTES PART SHALL HAVE FINISH.

2. APPLY NSF COMPLIANT GREASE TO ANY O-RING, SEALING JOINTS, AND/OR PIVOTAL POINTS.

3. APPLY NSF COMPLIANT LOCTITE TO THREADED AREA.

4. APPLY NSF COMPLIANT REMOVABLE (BLUE) LOCTITE TO THREADED AREA.

5. SILVER SOLDER JOINTS SHALL BE FULLY WETTED VIA CAPILLARY ACTION AND COMPLETELY NON POROUS.



ITEM NO.	PART NUMBER	DESCRIPTION	QTY.
1	1-054	VALVE, DECK MOUNTED SINGLE HANDLE LAV DROP-IN	1
2	3-545/00	BRASS PUSH TYPE DRAIN, W/ OVERFLOW & SMALL PLUG	1
3	3-684/00	ASSY, SPOUT HIGH, KNURLED, DUSTRIE	1
3.1	2-358/00	ASSY SPOUT HIGH, SLEEVE, BASE, KNURL, DUSTRIE	1
3.2	11885/00	ESCUTCHEON, DUSTRIE	1
3.3	10745	THREAD ALL, 3/8"-18 NPSL - 3/8"NPT	1
3.4	10746	NUT, 3/8"-18 NPSL	1
3.5	1-112	TEE VALVE, 3/8" NPSM X 3/8" COMPRESSION	1
3.6	11428	AERATOR, CACHE TJ, 1.2GPM PCA PINK, 43.2260.450	1
3.7	90032	O-RING, 1-7/8"ID X 2"OD X 1/16"THK, AS-568-032	1
3.8	92174	WASHER, 1.860 O.D X .690 I.D	1
4	3-658/00	ASSY, HANDLE CROSS, DECK TUB, KNURLED, W/ HUB BASE	1
4.1	12002/00	HUB, HANDLE, DECK TUB, KNURL, DUSTRIE	1
4.2	12069/00	ESCUTCHEON, BASE, DECK, DUSTRIE	1
4.3	90033	O-RING, 2"ID X 2-1/8"OD X 1/16"THK, AS-568-033	1
4.4	3-650/00	HANDLE CROSS, KNURLED, W/ HARWARE, DUSTRIE	1
4.4.1	2-356/00	ASSY, POST & HANDLE, KNURLED, BRAZE	1
4.4.2	92008	SET SCREW, CUP POINT 8-32, 3/16" L.	1
4.4.3	92404	WEAR WASHER, HANDLE	1
5	90014	O-RING, 1/2"ID X 5/8"OD X 1/16"THK, AS-568-014	1
6	92021	HEX KEY 5/64, FOR 8-32 SET SCREW	1
7	92138	BRASS WASHER, THIN	2
8	92313	HEX NUT, 1-1/4"-20 THREAD	2
9	92492	CAP NUT, 3/8" COMPRESSION	1

ZONE	REV.	DESCRIPTION	DATE	APPROVED
REVISIONS				

1261 LOGAN AVENUE
COSTA MESA, CALIFORNIA 92626
PHONE: 714.361.4800
FAX: 714.617.3120

PHYLIRICH[®]
Defining Luxury Since 1959

PROPRIETARY AND CONFIDENTIAL
THE INFORMATION CONTAINED IN THIS DRAWING
IS THE SOLE PROPERTY OF PHYLIRICH. ANY
REPRODUCTION IN PART OR AS A WHOLE
WITHOUT THE WRITTEN PERMISSION OF PHYLIRICH
IS PROHIBITED.
DO NOT SCALE DRAWING

TWO HOLE LAV SET - SINGLE HANDLE,
ARC SPOUT W/ CROSS KNURLED, DUSTRIE

SIZE	ASM/PRT NO.	REV
A	371-09/00	-
SCALE: 1:5.25	WEIGHT: lbs.	SHEET 1 OF 2