

NOTE(S):  
1. PART NUMBER, "/00" DENOTES PART SHALL HAVE FINISH.

2. APPLY NSF COMPLIANT GREASE TO ANY O-RING, SEALING JOINTS, AND/OR PIVOTAL POINTS.

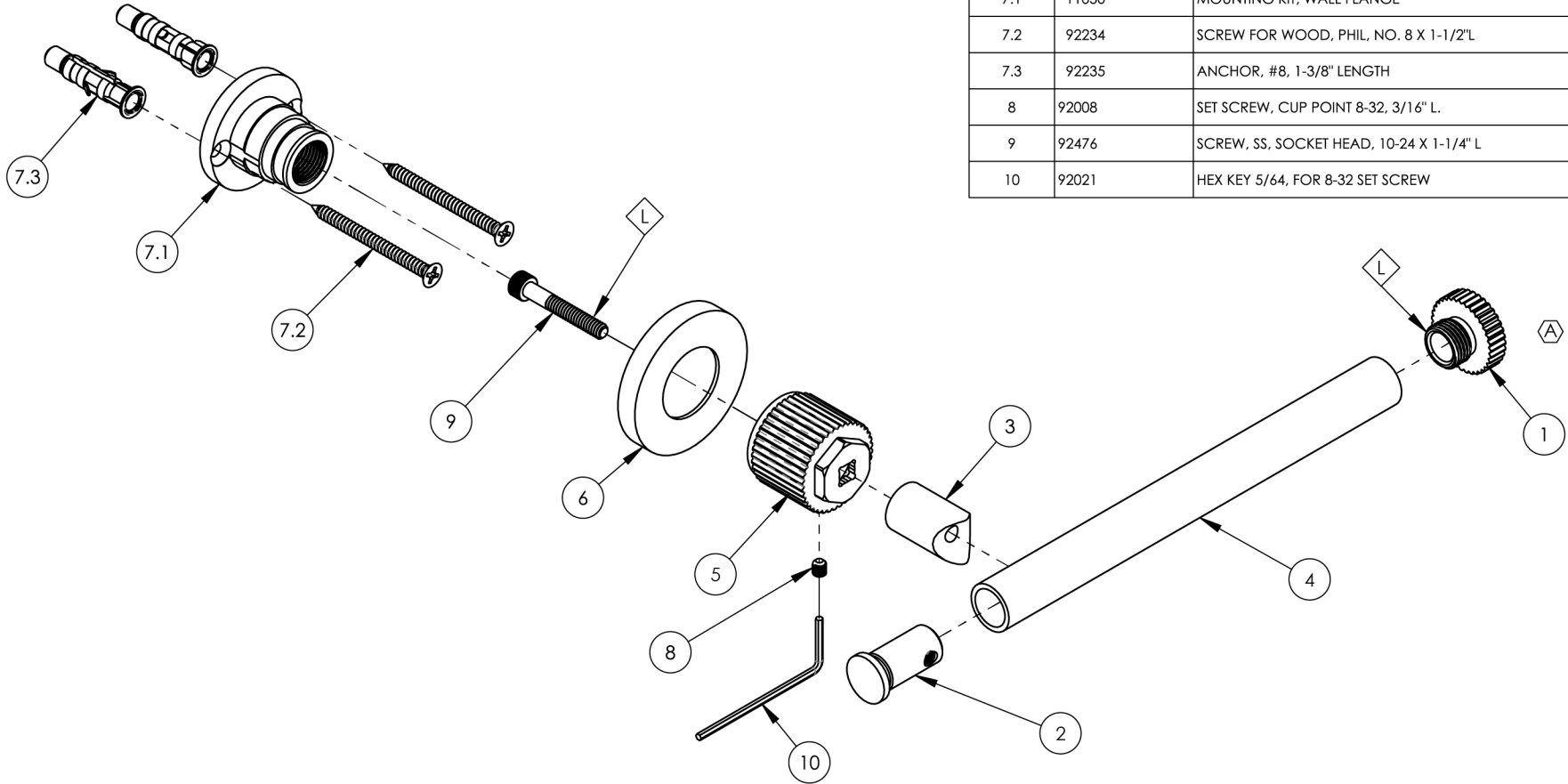
3. APPLY NSF COMPLIANT LOCTITE TO THREADED AREA.

4. APPLY NSF COMPLIANT REMOVABLE (BLUE) LOCTITE TO THREADED AREA.

5. SILVER SOLDER JOINTS SHALL BE FULLY WETTED VIA CAPILLARY ACTION AND COMPLETELY NON-POROUS.



ITEM NO.	PART NUMBER	DESCRIPTION	QTY.
1	12482/00	END CAP GROOVED, PAPER HOLDER, DUSTRIE	1
2	11958/00	END CAP, ACCESSORIES, TRANSITION II	1
3	11960/00	POST EXTENSION, ACCESSORIES, TRANSITION II	1
4	11963/00	TUBE, PAPER HOLDER, TRANSITION II	1
5	12115/00	ESCUTCHEON HUB, GROOVED, ACCESSORIES, DUSTRIE	1
6	12117/00	ESCUTCHEON BASE, ACCESSORIES, DUSTRIE	1
7	2-103	MOUNTING KIT WITH ADJUSTABLE THREADED PIN	1
7.1	11050	MOUNTING KIT, WALL FLANGE	1
7.2	92234	SCREW FOR WOOD, PHIL. NO. 8 X 1-1/2" L	2
7.3	92235	ANCHOR, #8, 1-3/8" LENGTH	2
8	92008	SET SCREW, CUP POINT 8-32, 3/16" L.	1
9	92476	SCREW, SS, SOCKET HEAD, 10-24 X 1-1/4" L	1
10	92021	HEX KEY 5/64, FOR 8-32 SET SCREW	1



C1	A	UPDATED END CAP FOR TP TUBE, GROOVED	3/31/2025	LLO
ZONE	REV.	DESCRIPTION	DATE	APPROVED
REVISIONS				

1261 LOGAN AVENUE  
COSTA MESA, CALIFORNIA 92626  
PHONE: 714.361.4800  
FAX: 714.617.3120

**PHYLIRICH**<sup>®</sup>  
Defining Luxury Since 1959

PROPRIETARY AND CONFIDENTIAL  
THE INFORMATION CONTAINED IN THIS DRAWING  
IS THE SOLE PROPERTY OF PHYLIRICH. ANY  
REPRODUCTION IN PART OR AS A WHOLE  
WITHOUT THE WRITTEN PERMISSION OF PHYLIRICH  
IS PROHIBITED.  
DO NOT SCALE DRAWING

PAPER HOLDER, SINGLE POST,  
ACCESSORIES, GROOVED, DUSTRIE

SIZE	ASM/PRT NO.	REV
A	370-74/00	A
SCALE: 1:2	WEIGHT: lbs.	SHEET 1 OF 2