

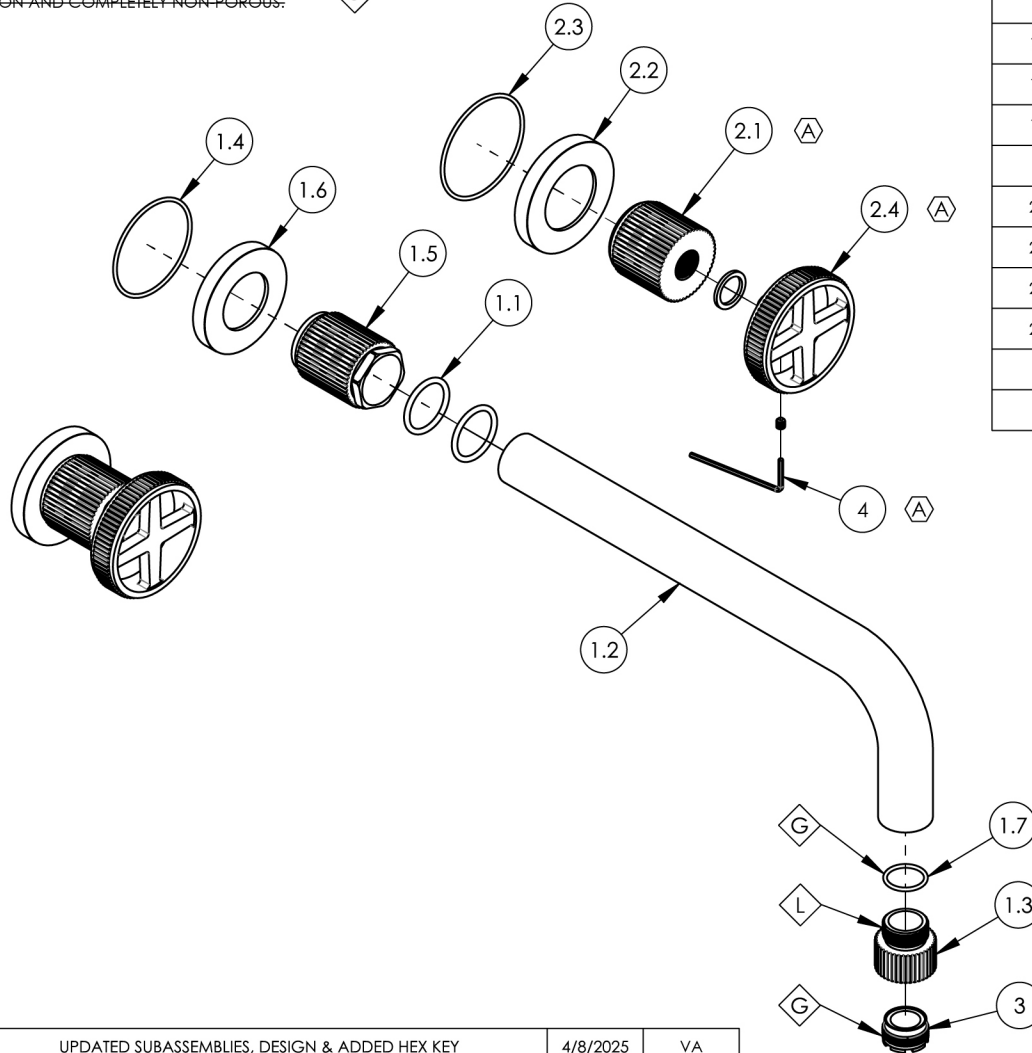
NOTE(S):
1. PART NUMBER, "/00" DENOTES PART SHALL HAVE FINISH.

2. APPLY NSF COMPLIANT GREASE TO ANY O-RING, SEALING JOINTS, AND/OR PIVOTAL POINTS.

3. APPLY NSF COMPLIANT LOCTITE TO THREADED AREA.

4. APPLY NSF COMPLIANT REMOVABLE (BLUE) LOCTITE TO THREADED AREA.

5. SILVER SOLDER JOINTS SHALL BE FULLY WETTED VIA CAPILLARY ACTION AND COMPLETELY NON-POROUS.



ITEM NO.	PART NUMBER	DESCRIPTION	QTY.
1	3-736/00	WALL SPOUT & BASE, 10", GROOVED, DUSTRIE	1
1.1	90119	O-RING, 15/16"ID X 1-1/8"OD X 3/32"THK, AS-568-119	2
1.2	10479/00	10" WALL LAV SPOUT, BASIC SERIES	1
1.3	11972/00	AERATOR HOUSING, WALL/DECK SPOUT, GROOVED, DUSTRIE	1
1.4	90032	O-RING, 1-7/8"ID X 2"OD X 1/16"THK, AS-568-032	1
1.5	11937/00	BASE, WALL SPOUT, GROOVED, DUSTRIE	1
1.6	11885/00	ESCUTCHEON, DUSTRIE	1
1.7	90017	O-RING, 11/16"ID X 13/16"OD X 1/16"THK, AS-568-017	1
2	3-657/00	ASSY, HANDLE CROSS, DECK TUB, GROOVED W/ HUB BASE	2
2.1	12001/00	HUB, DECK, GROOVED, DUSTRIE	1
2.2	12069/00	ESCUTCHEON, BASE, DECK, DUSTRIE	1
2.3	90033	O-RING, 2"ID X 2-1/8"OD X 1/16"THK, AS-568-033	1
2.4	3-649/00	HANDLE CROSS, GROOVED, W/ HARDWARE, DUSTRIE	1
3	P05024	AERATOR CACHE COIN SLOT, M21.5X1.0 FULL FLOW	1
4	92021	HEX KEY 5/64, FOR 8-32 SET SCREW	1

ALL	A	UPDATED SUBASSEMBLIES, DESIGN & ADDED HEX KEY	4/8/2025	VA
ZONE	REV.	DESCRIPTION	DATE	APPROVED
REVISIONS				

1261 LOGAN AVENUE
COSTA MESA, CALIFORNIA 92626
PHONE: 714.361.4800
FAX: 714.617.3120

PHYLIRICH
Defining Luxury Since 1959

PROPRIETARY AND CONFIDENTIAL
THE INFORMATION CONTAINED IN THIS DRAWING
IS THE SOLE PROPERTY OF PHYLIRICH. ANY
REPRODUCTION IN PART OR AS A WHOLE
WITHOUT THE WRITTEN PERMISSION OF PHYLIRICH
IS PROHIBITED.
DO NOT SCALE DRAWING

WALL TUB SET, CROSS HANDLES, 10",
GROOVED, DUSTRIE

SIZE	ASM/PRT NO.	REV
A	370-56-10/00	A
SCALE: 1:3.5	WEIGHT: lbs.	SHEET 1 OF 2