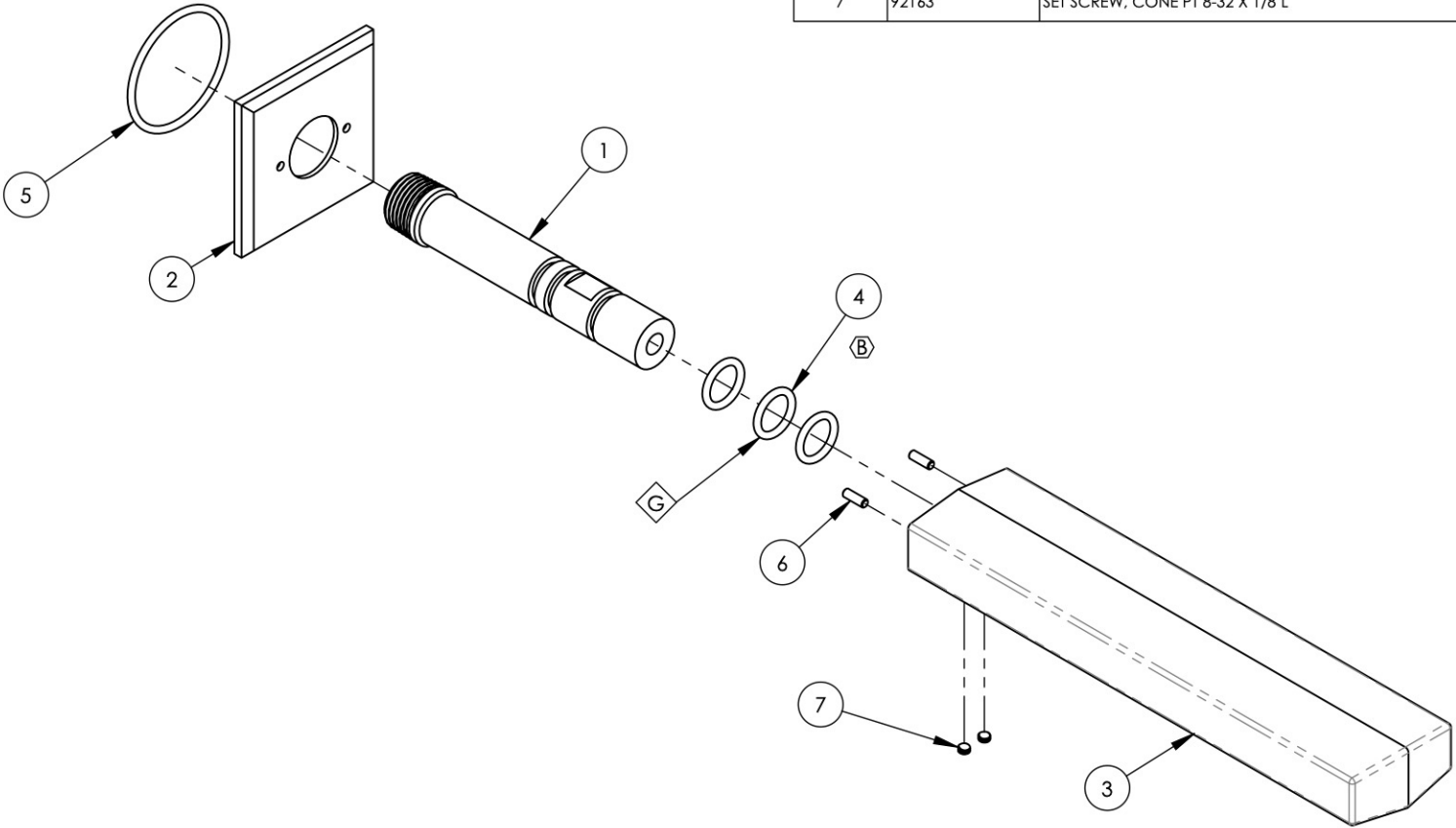


- NOTE(S):
1. PART NUMBER, "/00" DENOTES PART SHALL HAVE FINISH.
  2. APPLY NSF COMPLIANT GREASE TO ANY O-RING, SEALING JOINTS, AND/OR PIVOTAL POINTS.
  3. APPLY NSF COMPLIANT LOCTITE TO THREADED AREA.
  4. APPLY NSF COMPLIANT REMOVABLE (BLUE) LOCTITE TO THREADED AREA.
  5. SILVER SOLDER JOINTS SHALL BE FULLY WETTED VIA CAPILLARY ACTION AND COMPLETELY NON POROUS.



ITEM NO.	PART NUMBER	DESCRIPTION	QTY.
1	10013	INJECTOR SHANK, 1/2"NPT MALE TO M16.5 CACHE W/ O-SEAL	1
2	11768/00	ESCUTCHEON, SPOUT, WALL LAV, DIAMA	1
3	11780/00	SPOUT, WALL TUB, DIAMA	1
4	90113	O-RING, 9/16"ID X 3/4"OD X 3/32"THK, AS-568-113	3
5	90131	O-RING, 1-11/16"ID X 3/32"THK, AS-568-131	1
6	92158	DOWEL PIN, 1/8" X 3/8"L	2
7	92163	SET SCREW, CONE PT 8-32 X 1/8"L	2



C3	B	UPDATE O-RINGS, ADD CALL OUT	2/22/2021	AMM
ZONE	REV.	DESCRIPTION	DATE	APPROVED

REVISIONS

**PROPRIETARY AND CONFIDENTIAL**

THE INFORMATION CONTAINED IN THIS DRAWING IS THE SOLE PROPERTY OF RSS MANUFACTURING. ANY REPRODUCTION IN PART OR AS A WHOLE WITHOUT THE WRITTEN PERMISSION OF RSS MANUFACTURING IS PROHIBITED.

184-15/00	-	INTERPRET GEOMETRIC DIMENSIONING & TOLERANCING IN ACCORDANCE WITH ASME Y14.5-2009 & ASME Y14.41-2003 STANDARDS. UNLESS OTHERWISE SPECIFIED, DIMENSIONS ARE IN INCHES. TOLERANCES ARE:
184-12/00	-	
184-11/00	-	
NEXT ASSY	USED ON	<b>FRACTIONS</b> ±1/64"
APPLICATION		<b>DECIMALS</b> X.X: ±.1 X.XX: ±.01 X.XXX: ±.005
MATERIAL		<b>ANGULAR</b> ±.5°
FINISH		<b>NAME</b> AMM
DO NOT SCALE DRAWING		<b>DATE</b> 2/19/2019
	CHECKED	

ASSY, WALL SPOUT, DIAMA

SIZE	ASM/PRT NO.	REV
<b>A</b>	3-597/00	<b>B</b>
SCALE: 1:2.5	WEIGHT: lbs.	SHEET 1 OF 2