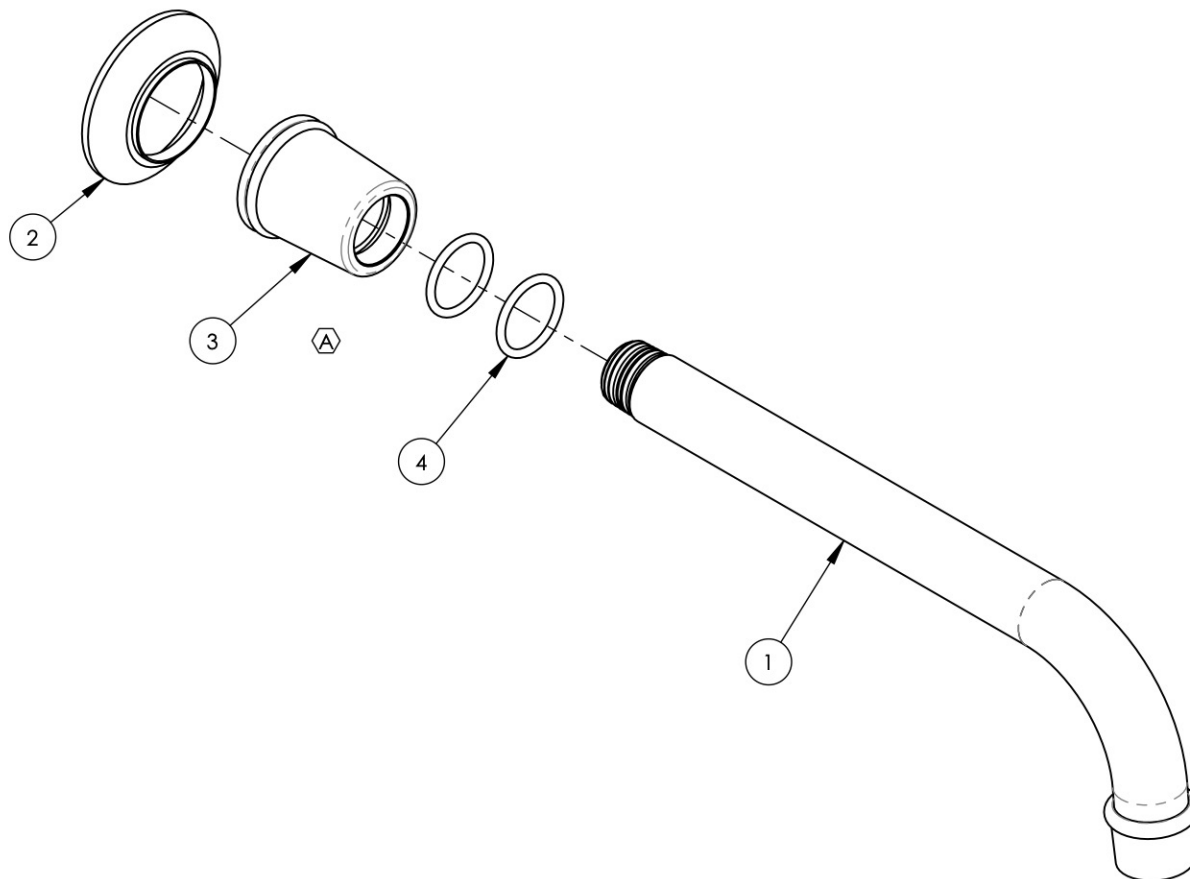


- NOTE(S):
1. PART NUMBER, "/00" DENOTES PART SHALL HAVE FINISH.
 2. APPLY NSF COMPLIANT GREASE TO ANY O-RING, SEALING JOINTS, AND/OR PIVOTAL POINTS.
 3. APPLY NSF COMPLIANT LOCTITE TO THREADED AREA.
 4. APPLY NSF COMPLIANT REMOVABLE (BLUE) LOCTITE TO THREADED AREA.
 5. SILVER SOLDER JOINTS SHALL BE FULLY WETTED VIA CAPILLARY ACTION AND COMPLETELY NON-POROUS.



ITEM NO.	PART NUMBER	DESCRIPTION	QTY.
1	2-282/00	ASSY, WALL SPOUT, BRAZE, HEX MODERN	1
2	10921/00	ESCUTCHEON, TRANSITIONAL	1
3	11562/00	HUB WALL SPOUT, HEX MOD. TRANS.	1
4	90118	O-RING, 7/8"ID X 1-1/16"OD X 3/32"THK, AS-568-118	2



D3, A3	A	REMOVE SET SCREW, ADD 2ND SHEET & WHERE USED	2/15/2021	AMM
ZONE	REV.	DESCRIPTION	DATE	APPROVED
REVISIONS				

1261 LOGAN AVENUE
COSTA MESA, CALIFORNIA 92626
PHONE: 714.361.4800
FAX: 714.617.3120

PHYLIRICH
Defining Luxury Since 1959

PROPRIETARY AND CONFIDENTIAL
THE INFORMATION CONTAINED IN THIS DRAWING IS THE SOLE PROPERTY OF PHYLIRICH. ANY REPRODUCTION IN PART OR AS A WHOLE WITHOUT THE WRITTEN PERMISSION OF PHYLIRICH IS PROHIBITED.

501-59/00	-	INTERPRET GEOMETRIC DIMENSIONING & TOLERANCING IN ACCORDANCE WITH ASME Y14.5-2009 & ASME Y14.41-2003 STANDARDS, UNLESS OTHERWISE SPECIFIED, DIMENSIONS ARE IN INCHES. TOLERANCES ARE:		
501-58/00	-			
501-14/00	-			
NEXT ASSY				
USED ON		FRACTIONS ±1/16"	DECIMALS X.X: ±.1 X.XX: ±.01 X.XXX: ±.005	ANGULAR ±2°
APPLICATION				
MATERIAL				
FINISH		DRAWN	NAME	DATE
		RAH	8/24/2018	
DO NOT SCALE DRAWING		CHECKED		

ASSY, WALL SPOUT, HEX MODERN

SIZE	ASM/PRT NO.	REV
A	3-555/00	A
SCALE: 1:2.25	WEIGHT: lbs.	SHEET 1 OF 2