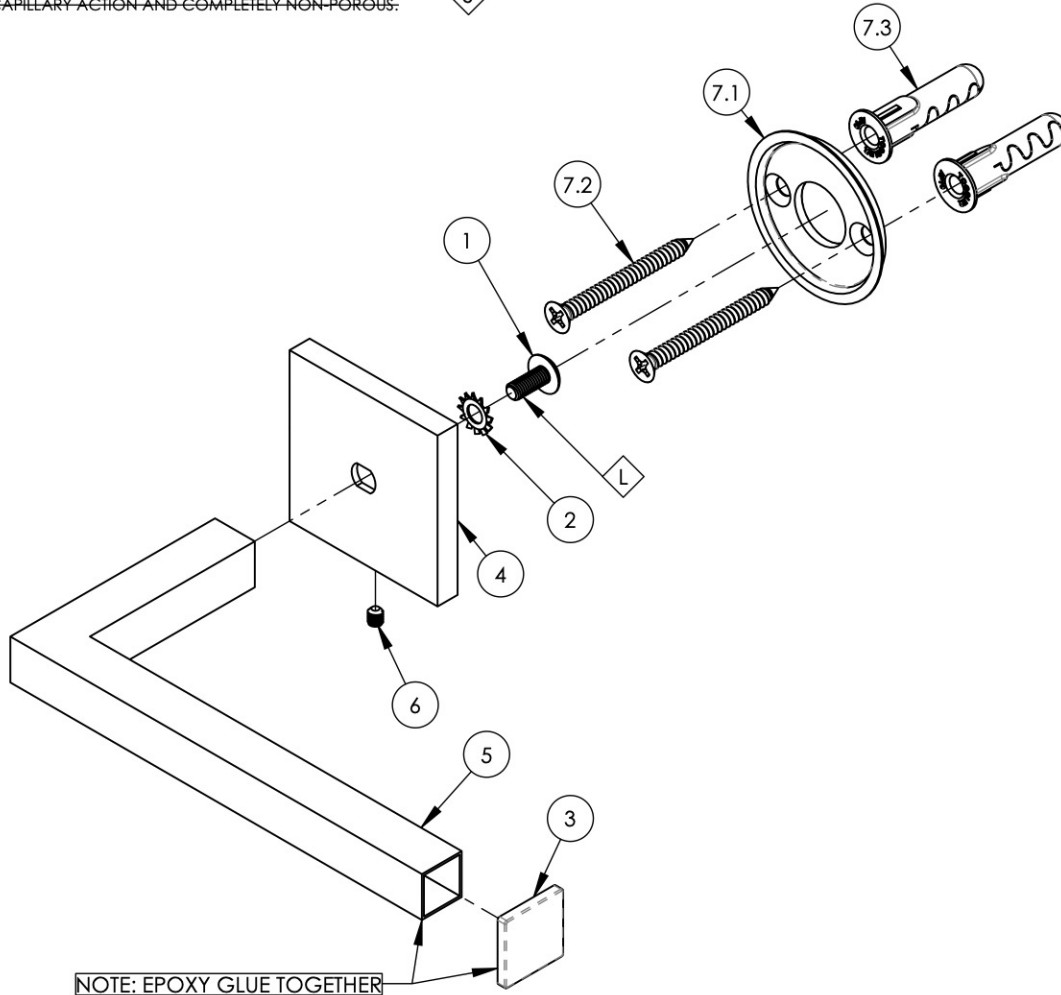


- NOTE(S):
 1. PART NUMBER, "/00" DENOTES PART SHALL HAVE FINISH.
 2. APPLY NSF COMPLIANT GREASE TO ANY O-RING, SEALING JOINTS, AND/OR PIVOTAL POINTS. **G**
 3. APPLY NSF COMPLIANT LOCTITE TO THREADED AREA. **L**
 4. APPLY NSF COMPLIANT REMOVABLE (BLUE) LOCTITE TO THREADED AREA. **B**
 5. SILVER SOLDER JOINTS SHALL BE FULLY WETTED VIA CAPILLARY ACTION AND COMPLETELY NON-POROUS. **S**



ITEM NO.	PART NUMBER	DESCRIPTION	QTY.
1	92504	18-8 SS TRUSS HEAD PHILLIPS SCREW, M5X0.8, 12MM L	1
2	92505	18-8 SS EXT.TOOTH LOCK WASHER FOR #12 SCREW	1
3	12228/00	END CAP, ACCESSORIE3S, PURCHASED, MIX/ STRIA	1
4	12338/00	ESCUTCHEON, ACCESSORIES, CROI	1
5	12226/00	BAR, TP HOLDER, SINGLE POST, PURCHASED, MIX/ STRIA	1
6	92008	SET SCREW, CUP POINT 8-32, 3/16" L.	1
7	2-098	MOUNTING KIT FOR MIX/EDGE SERIES	1
7.1	30042	WALL MOUNTING PLATE	1
7.2	92043	SCREW, FLAT HD #10 SIZE W/ #2 PHIL DRIVE, 2"L	2
7.3	92046	ANCHOR SCREW 3/8" HOLE, TOGGLER AF10	2

ZONE	REV.	DESCRIPTION	DATE	APPROVED
REVISIONS				

1261 LOGAN AVENUE
 COSTA MESA, CALIFORNIA 92626
 PHONE: 714.361.4800
 FAX: 714.617.3120

PHYLIRICH[®]
 Defining Luxury Since 1959

PROPRIETARY AND CONFIDENTIAL
 THE INFORMATION CONTAINED IN THIS DRAWING IS THE SOLE PROPERTY OF PHYLIRICH. ANY REPRODUCTION IN PART OR AS A WHOLE WITHOUT THE WRITTEN PERMISSION OF PHYLIRICH IS PROHIBITED.

-	-	INTERPRET GEOMETRIC DIMENSIONING & TOLERANCING IN ACCORDANCE WITH ASME Y14.5-2009 & ASME Y14.41-2003 STANDARDS, UNLESS OTHERWISE SPECIFIED. DIMENSIONS ARE IN INCHES. TOLERANCES ARE:		
NEXT ASSY	USED ON	FRACTIONS ±1/16"	DECIMALS X.X: ±.1 X.XX: ±.01 X.XXX: ±.005	ANGULAR ±2°
APPLICATION		MATERIAL	NAME	DATE
FINISH		DRAWN	AMM	4/28/2022
DO NOT SCALE DRAWING		CHECKED		

TP HOLDER, ACCESSORIES, CROI

SIZE **A** ASM/PRT NO. **255-74/00** REV -

SCALE: 1:2 WEIGHT: lbs. SHEET 1 OF 2