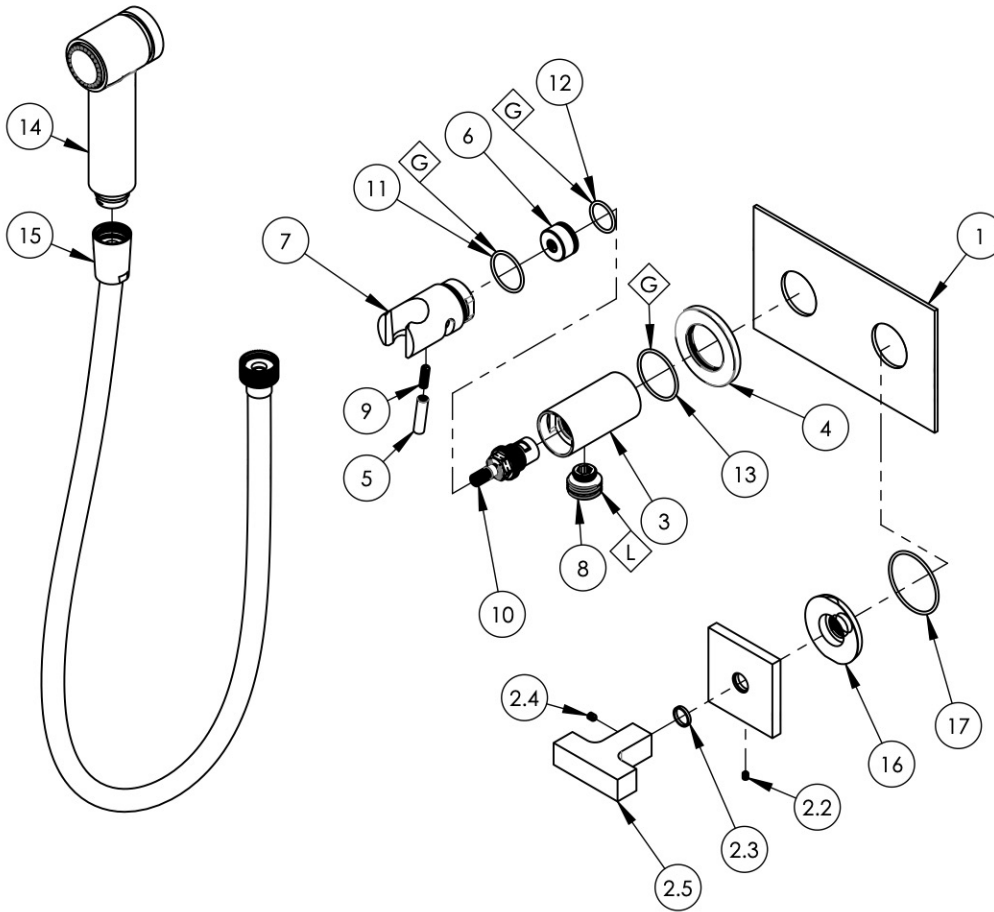


- NOTE(S):  
 1. PART NUMBER, "/00" DENOTES PART SHALL HAVE FINISH.  
 2. APPLY NSF COMPLIANT GREASE TO ANY O-RING, SEALING JOINTS, AND/OR PIVOTAL POINTS.  
 3. APPLY NSF COMPLIANT LOCTITE TO THREADED AREA.  
 4. APPLY NSF COMPLIANT REMOVABLE (BLUE) LOCTITE TO THREADED AREA.  
 5. SILVER SOLDER JOINTS SHALL BE FULLY WETTED VIA CAPILLARY ACTION AND COMPLETELY NON-POROUS.



ITEM NO.	PART NUMBER	DESCRIPTION	QTY.
1	11212/00	PLATE, TWO HANDLE, BASIC SERIES	1
2	3-799/00	ASSY, LEVER HANDLE, CROI SERIES	1
2.1	10937/00	ESCUTCHEON, HANDLE EDGE SERIES	1
2.2	92005	SET SCREW, CUP PT 6-32 UNC THREAD 3/16"L	1
2.3	92176	WEAR WASHER	1
2.4	92008	SET SCREW, CUP POINT 8-32, 3/16" L.	1
2.5	12298	LEVER HANDLE, CROI	1
3	10859/00	BODY, HANDSHOWER HOLDER W/ INTEGRATED VOL. CTRL.	1
4	10860/00	ESCUTCHEON, FLANGE	1
5	10861/00	HANDLE, LEVER 10-24 UNC	1
6	10862/00	HIDDEN HUB, HANDSHOWER VOL. CTRL.	1
7	10863/00	SHOWER HOOK, INTEGRATED HANDLE	1
8	P18011/00	CONNECTOR OUTLET 1/2"	1
9	92152	SET SCREW, CUP PT. 10-24 UNC X 5/8"L	1
10	10739	CARTRIDGE, VALVE 3/8"G RIGHT CLOSING	1
11	90021	O-RING, 15/16"ID X 1-1/16"OD X 1/16"THK, AS-568-021	1
12	90017	O-RING, 11/16"ID X 13/16"OD X 1/16"THK, AS-568-017	1
13	90025	O-RING, 1-3/16"ID X 1/16"THK, AS-568-025	1
14	3-410/00	ASSY, HAND SPRAY	1
15	3-049/00	ASSY, HOSE KIT, HANDSHOWER	1
16	11003	SLEEVE MOUNT, WALL MT WIDESPREAD	1
17	90029	O-RING, 1-5/8"ID X 1-3/4"OD X 1/16"THK, AS-568-029	1

1261 LOGAN AVENUE  
 COSTA MESA, CALIFORNIA 92626  
 PHONE: 714.361.4800  
 FAX: 714.617.3120

**PHYLIRICH®**  
 Defining Luxury Since 1959

**PROPRIETARY AND CONFIDENTIAL**  
 THE INFORMATION CONTAINED IN THIS DRAWING IS THE SOLE PROPERTY OF PHYLIRICH. ANY REPRODUCTION IN PART OR AS A WHOLE WITHOUT THE WRITTEN PERMISSION OF PHYLIRICH IS PROHIBITED.  
**DO NOT SCALE DRAWING**

TRIM, WALL MOUNTED BIDET, LEVER, CROI

SIZE	ASM/PRT NO.	REV
<b>A</b>	255-65/00	-
SCALE: 1:4.5	WEIGHT: lbs.	SHEET 1 OF 2