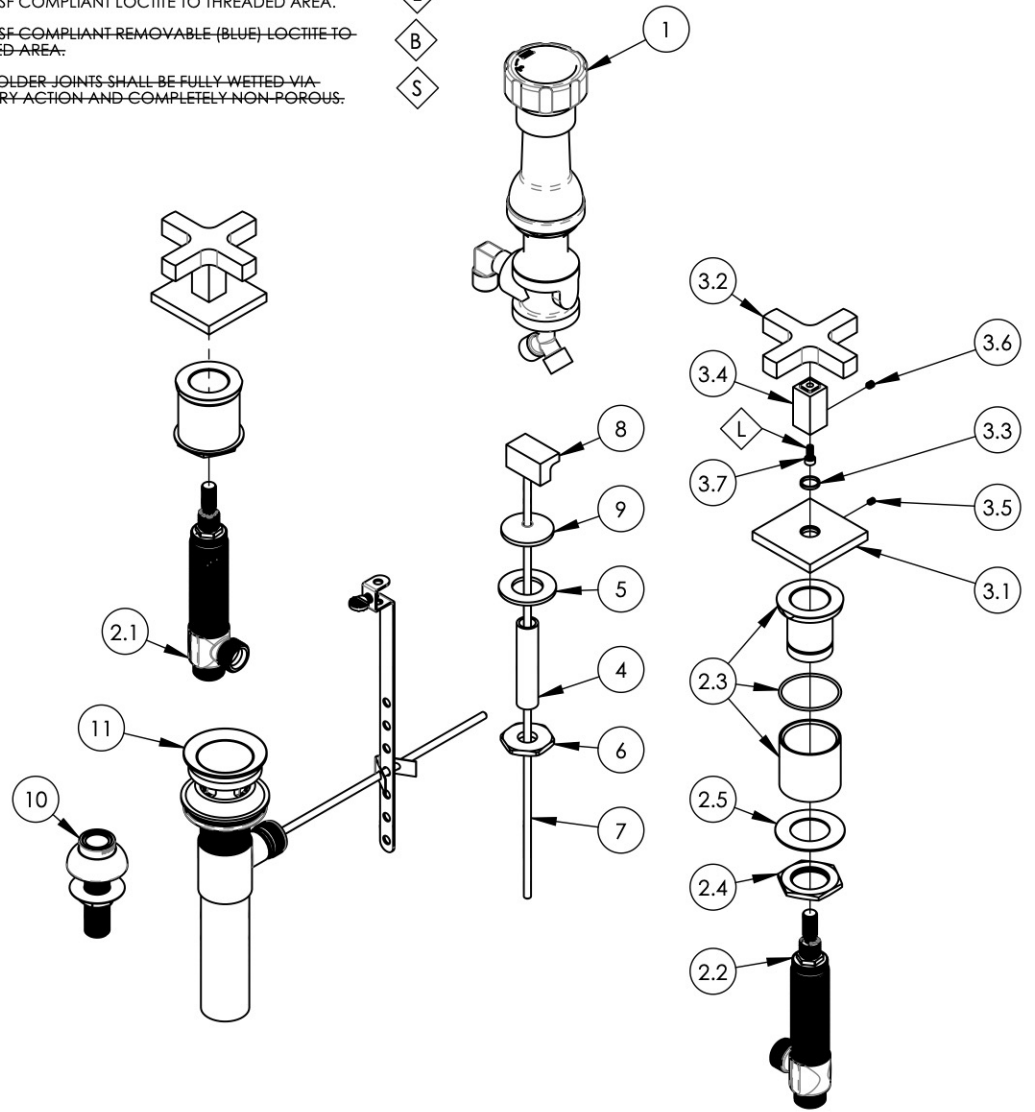


- NOTE(S):  
 1. PART NUMBER, "/00" DENOTES PART SHALL HAVE FINISH.  
 2. APPLY NSF COMPLIANT GREASE TO ANY O-RING, SEALING JOINTS, AND/OR PIVOTAL POINTS.  
 3. APPLY NSF COMPLIANT LOCTITE TO THREADED AREA.  
 4. APPLY NSF COMPLIANT REMOVABLE (BLUE) LOCTITE TO THREADED AREA.  
 5. SILVER SOLDER JOINTS SHALL BE FULLY WETTED VIA CAPILLARY ACTION AND COMPLETELY NON-POROUS.

- ◇ G
- ◇ L
- ◇ B
- ◇ S



ITEM NO.	PART NUMBER	DESCRIPTION	QTY.
1	3-160/00	BIDET DIVERTER, COMPLETE	1
2	1-700	WIDESPREAD VALVE 16PT, HOT & COLD, W/ FLUSH MOUNTING KITS	1
2.1	1-149	WIDESPREAD VALVE LAV 16PT, HOT, ONLY	1
2.2	1-150	WIDESPREAD VALVE LAV 16PT, COLD, ONLY	1
2.3	2-410	RECESSED FLUSHED MOUNTING KIT FOR WIDESPREAD W/O WASHER/NUT	2
2.4	92251	HEX NUT, 1"-20 THREAD	2
2.5	92252	WASHER, 1-1/32" ID 1-13/16" OD	2
3	3-792	ASSY, CROSS HANDLE, SQUARE POST, CROI	2
3.1	10937/00	ESCUTCHEON, HANDLE EDGE SERIES	1
3.2	12300/00	HANDLE CROSS, CONTEMPORARY 16PT	1
3.3	92176	WEAR WASHER	1
3.4	12271	SQUARE POST MODERN HUB	1
3.5	92005	SET SCREW, CUP PT 6-32 UNC THREAD 3/16"L	1
3.6	92008	SET SCREW, CUP POINT 8-32, 3/16" L.	1
3.7	92013	SCREW, SOCKET HD CAP 8-32 THREAD, 3/8" LENGTH	1
4	P32010	9/16-20 x 56 NIPPLE FOR COMPRESSION STEM	1
5	P35026	3/4" SAE FLAT WASHER	1
6	P09006	SPECIAL HEX F/BIDET SPRAYER	1
7	10719/00	POP-UP ROD, 10-24, 14" LONG	1
8	10957/00	POP-UP KNOB, EDGE SERIES	1
9	10845/00	ESCUTCHEON BASE, BIDET POP-UP	1
10	3-085/00	ASSY, BIDET SPRAYER	1
11	3-046/00	POP-UP DRAIN ASSEMBLY (2-101, 2-102, & 2-246)	1

REVISIONS

ZONE	REV.	DESCRIPTION	DATE	APPROVED

1261 LOGAN AVENUE  
 COSTA MESA, CALIFORNIA 92626  
 PHONE: 714.361.4800  
 FAX: 714.617.3120

**PHYLIRICH®**  
 Defining Luxury Since 1959

**PROPRIETARY AND CONFIDENTIAL**  
 THE INFORMATION CONTAINED IN THIS DRAWING IS THE SOLE PROPERTY OF PHYLIRICH. ANY REPRODUCTION IN PART OR AS A WHOLE WITHOUT THE WRITTEN PERMISSION OF PHYLIRICH IS PROHIBITED.  
**DO NOT SCALE DRAWING**

**FOUR HOLE BIDET SET, CROSS HANDLE, CROI**

SIZE <b>A</b>	ASM/PRT NO. <b>255-60/00</b>	REV -
SCALE: 1:5	WEIGHT: lbs.	SHEET 1 OF 2