

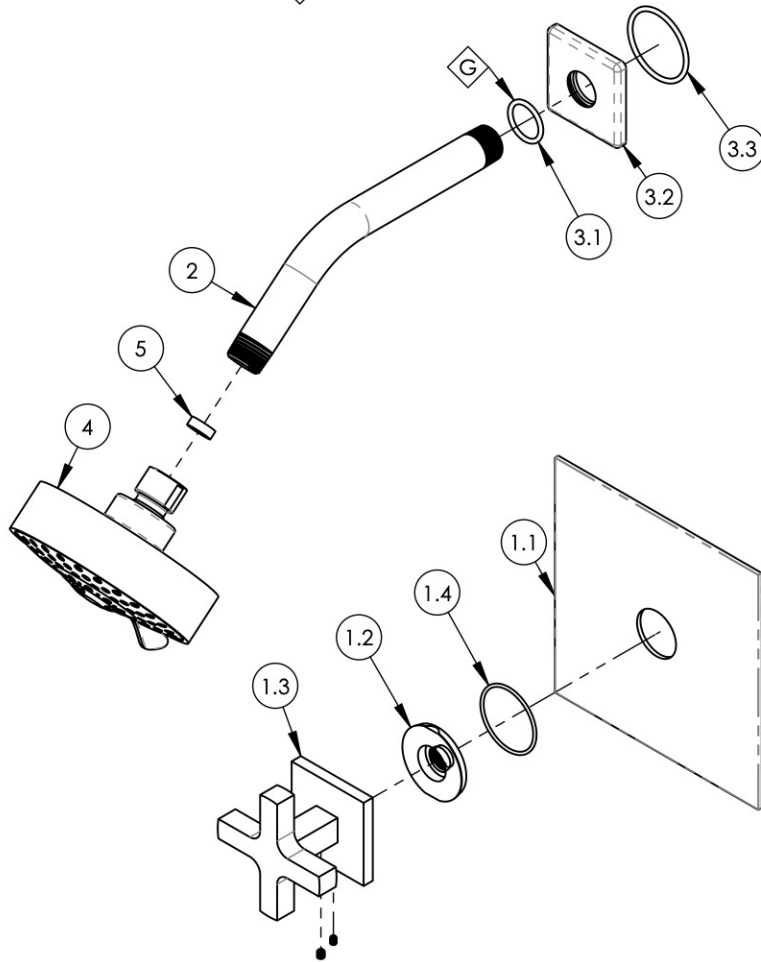
NOTE(S):
 1. PART NUMBER, "/00" DENOTES PART SHALL HAVE FINISH.

2. APPLY NSF COMPLIANT GREASE TO ANY O-RING, SEALING JOINTS, AND/OR PIVOTAL POINTS.

3. APPLY NSF COMPLIANT LOCTITE TO THREADED AREA.

4. APPLY NSF COMPLIANT REMOVABLE (BLUE) LOCTITE TO THREADED AREA.

5. SILVER SOLDER JOINTS SHALL BE FULLY WETTED VIA CAPILLARY ACTION AND COMPLETELY NON-POROUS.



ITEM NO.	PART NUMBER	DESCRIPTION	QTY.
1	4-724	PB PLATE, CROSS HANDLE, CROI SERIES	1
1.1	10958/00	PLATE, SHOWER TRIM MIX SERIES	1
1.2	11003	SLEEVE MOUNT, WALL MT WIDESPREAD	1
1.3	3-792	ASSY, CROSS HANDLE, SQUARE POST, CROI	1
1.4	90029	O-RING, 1-5/8"ID X 1-3/4"OD X 1/16"THK, AS-568-029	1
2	P16008/00	SHOWER ARM (8 INCH)	1
3	3-719/00	SHOWER FLANGE, MIX/ STRIA	1
3.1	90117	O-RING, 7/8"ID X 33/32"THK., AS-568-117	1
3.2	10935/00	ESCUTCHEON, SHOWER FLANGE MIX SERIES	1
3.3	90129	O-RING, 1-9/16"ID X 3/32"THK, AS-568-129	1
4	3-454	SHOWER HEAD MULTI. FUNCTION CONTEMP.	1
5	12265	FLOW RESTRICTOR, 1.8GPM, SHOWERHEAD	1

REVISIONS

ZONE	REV.	DESCRIPTION	DATE	APPROVED

1261 LOGAN AVENUE
 COSTA MESA, CALIFORNIA 92626
 PHONE: 714.361.4800
 FAX: 714.617.3120

PHYLIRICH[®]
 Defining Luxury Since 1959

PROPRIETARY AND CONFIDENTIAL
 THE INFORMATION CONTAINED IN THIS DRAWING IS THE SOLE PROPERTY OF PHYLIRICH. ANY REPRODUCTION IN PART OR AS A WHOLE WITHOUT THE WRITTEN PERMISSION OF PHYLIRICH IS PROHIBITED.
DO NOT SCALE DRAWING

**PRESSURE BALANCE SHOWER TRIM,
 CROSS, CROI**

SIZE A	ASM/PRT NO. 255-21/00	REV
SCALE: 1:4	WEIGHT: lbs.	SHEET 1 OF 2