

NOTE(S):

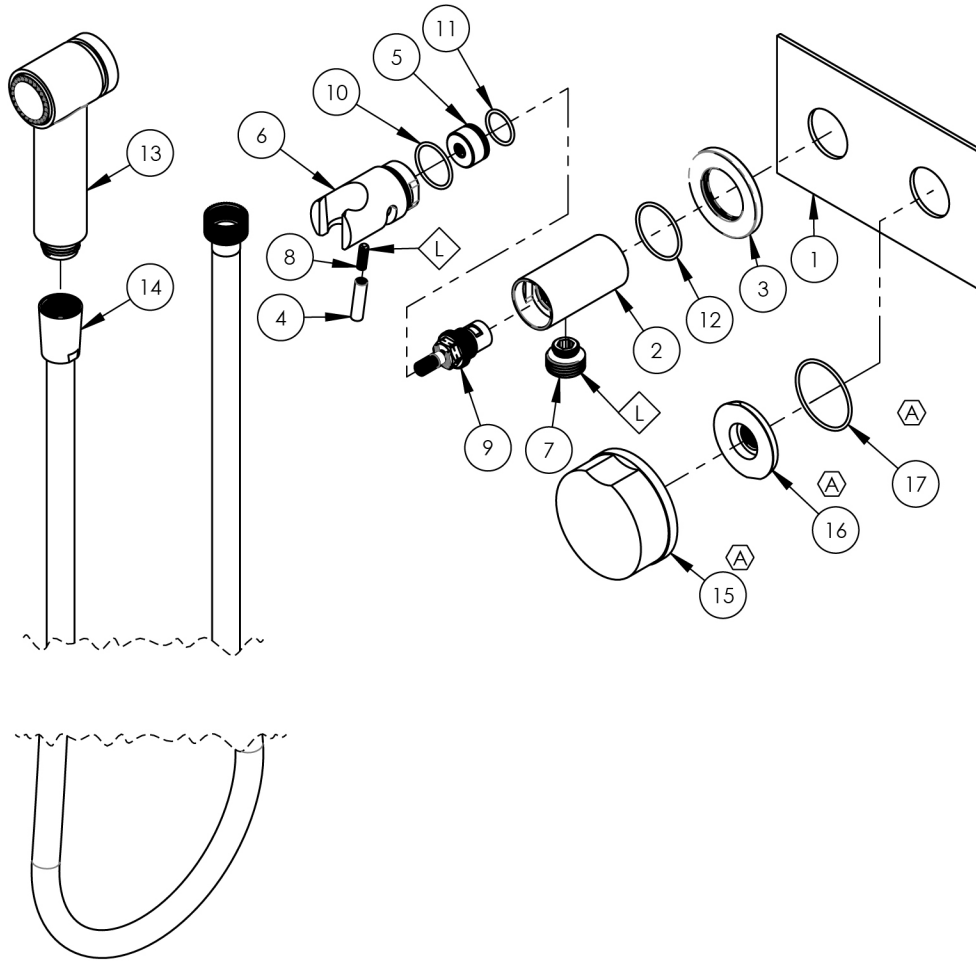
1. EXAMPLE OF SPLIT FINISH CODE:  
A. 250-03X030

2. MARBLE HANDLE OPTIONS:

A. BLACK MARBLE= 3-820 (.../00X030)  
B. WHITE MARBLE= 3-826 (.../00X031)

3. APPLY NSF COMPLIANT GREASE TO ANY O-RING, SEALING  
JOINTS, AND/OR PIVOTAL POINTS.

4. APPLY NSF COMPLIANT LOCTITE TO THREADED AREA.



SEE NOTES \*

ITEM NO.	PART NUMBER	DESCRIPTION	QTY.
1	11212/00	PLATE, TWO HANDLE, BASIC SERIES	1
2	10859/00	BODY, HANDSHOWER HOLDER W/ INTEGRATED VOL. CTRL.	1
3	10860/00	ESCUTCHEON, FLANGE	1
4	10861/00	HANDLE, LEVER 10-24 UNC	1
5	10862/00	HIDDEN HUB, HANDSHOWER VOL. CTRL.	1
6	10863/00	SHOWER HOOK, INTEGRATED HANDLE	1
7	P18011/00	CONNECTOR OUTLET 1/2"	1
8	92152	SET SCREW, CUP PT. 10-24 UNC X 5/8"L	1
9	10739	CARTRIDGE, VALVE 3/8"G RIGHT CLOSING	1
10	90021	O-RING, 15/16"ID X 1-1/16"OD X 1/16"THK, AS-568-021	1
11	90017	O-RING, 11/16"ID X 13/16"OD X 1/16"THK, AS-568-017	1
12	90025	O-RING, 1-3/16"ID X 1/16"THK, AS-568-025	1
13	3-410/00	ASSY, HAND SPRAY	1
14	3-049/00	ASSY, HOSE KIT, HANDSHOWER	1
15	3-820/00	ASSY, ROUND BLACK MARBLE HANDLE, CIRC	1
16	11003	SLEEVE MOUNT, WALL MT WIDESPREAD	1
17	90029	O-RING, 1-5/8"ID X 1-3/4"OD X 1/16"THK, AS-568-029	1

C3	A	ADDED COMPONENTS FOR STANDARD FLUSH MOUNT	10/23/2024	RAH
ZONE	REV.	DESCRIPTION	DATE	APPROVED

REVISIONS

1261 LOGAN AVENUE  
COSTA MESA, CALIFORNIA 92626  
PHONE: 714.361.4800  
FAX: 714.617.3120

**PHYLIRICH®**  
Defining Luxury Since 1959

PROPRIETARY AND CONFIDENTIAL  
THE INFORMATION CONTAINED IN THIS DRAWING  
IS THE SOLE PROPERTY OF PHYLIRICH. ANY  
REPRODUCTION IN PART OR AS A WHOLE  
WITHOUT THE WRITTEN PERMISSION OF PHYLIRICH  
IS PROHIBITED.  
DO NOT SCALE DRAWING

TRIM, WALL MOUNTED BIDET, ROUND  
MARBLE HANDLE, CIRC

SIZE	ASM/PRT NO.	REV
A	250-66/00	A
SCALE: 1:4	WEIGHT: lbs.	SHEET 1 OF 2