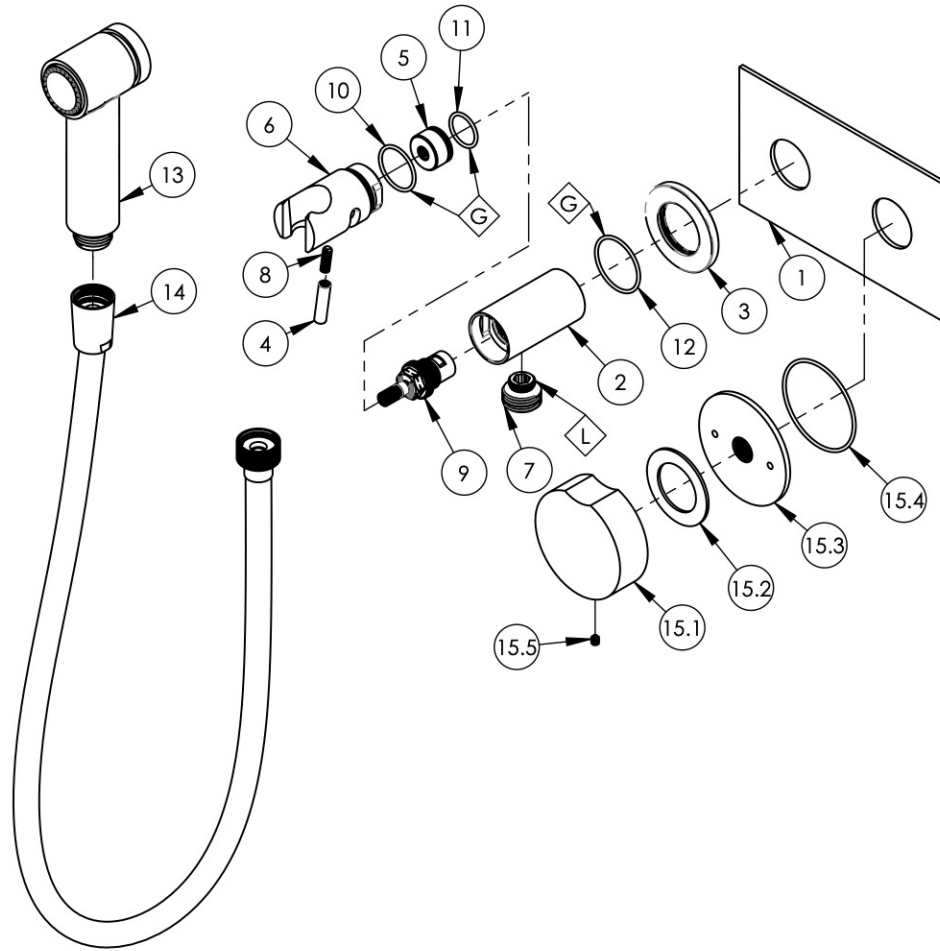


NOTE(S):  
 1. EXAMPLE OF SPLIT FINISH CODE:  
 A. 230-03X030

2. MARBLE HANDLE OPTIONS:  
 A. BLACK MARBLE= 3-797 (.../00X030)  
 B. WHITE MARBLE= 3-798 (.../00X031)

3. APPLY NSF COMPLIANT GREASE TO ANY O-RING, SEALING JOINTS, AND/OR PIVOTAL POINTS. G

4. APPLY NSF COMPLIANT LOCTITE TO THREADED AREA. L



SEE NOTES\*

ITEM NO.	PART NUMBER	DESCRIPTION	QTY.
1	11212/00	PLATE, TWO HANDLE, BASIC SERIES	1
2	10859/00	BODY, HANDSHOWER HOLDER W/ INTEGRATED VOL. CTRL.	1
3	10860/00	ESCUTCHEON, FLANGE	1
4	10861/00	HANDLE, LEVER 10-24 UNC	1
5	10862/00	HIDDEN HUB, HANDSHOWER VOL. CTRL.	1
6	10863/00	SHOWER HOOK, INTEGRATED HANDLE	1
7	P18011/00	CONNECTOR OUTLET 1/2",	1
8	92152	SET SCREW, CUP PT. 10-24 UNC X 5/8"L	1
9	10739	CARTRIDGE, VALVE 3/8"G RIGHT CLOSING	1
10	90021	O-RING, 15/16"ID X 1-1/16"OD X 1/16"THK, AS-568-021	1
11	90017	O-RING, 11/16"ID X 13/16"OD X 1/16"THK, AS-568-017	1
12	90025	O-RING, 1-3/16"ID X 1/16"THK, AS-568-025	1
13	3-410/00	ASSY, HAND SPRAY	1
14	3-049/00	ASSY, HOSE KIT, HANDSHOWER	1
15	3-798/00	ROUND BLACK MARBLE HANDLE, WALL LAV, MOUNT ASSY	1
15.1	2-408	BLACK MARBLE HANDLE W/ BROACH INSERT	1
15.2	92345	WASHER	1
15.3	30545/00	ESCUTCHEON, WALL MOUNT, SHOWER	1
15.4	90033	O-RING, 2"ID X 2-1/8"OD X 1/16"THK, AS-568-033	1
15.5	92008	SET SCREW, CUP POINT 8-32, 3/16" L.	1

ZONE	REV.	DESCRIPTION	DATE	APPROVED
------	------	-------------	------	----------

REVISIONS

1261 LOGAN AVENUE  
 COSTA MESA, CALIFORNIA 92626  
 PHONE: 714.361.4800  
 FAX: 714.617.3120

**PHYLIRICH**<sup>®</sup>  
 Defining Luxury Since 1959

**PROPRIETARY AND CONFIDENTIAL**  
 THE INFORMATION CONTAINED IN THIS DRAWING IS THE SOLE PROPERTY OF PHYLIRICH. ANY REPRODUCTION IN PART OR AS A WHOLE WITHOUT THE WRITTEN PERMISSION OF PHYLIRICH IS PROHIBITED.  
**DO NOT SCALE DRAWING**

TRIM, WALL MOUNTED BIDET, ROUND MARBLE HANDLE, CIRC

SIZE <b>A</b>	ASM/PRT NO. 250-66/00	REV -
SCALE: 1:4	WEIGHT: lbs.	SHEET 1 OF 2