

NOTE(S):  
1. PART NUMBER, "/00" DENOTES PART SHALL HAVE FINISH.

2. APPLY NSF COMPLIANT GREASE TO ANY O-RING, SEALING JOINTS, AND/OR PIVOTAL POINTS.

3. APPLY NSF COMPLIANT LOCTITE TO THREADED AREA.

4. APPLY NSF COMPLIANT REMOVABLE (BLUE) LOCTITE TO THREADED AREA.

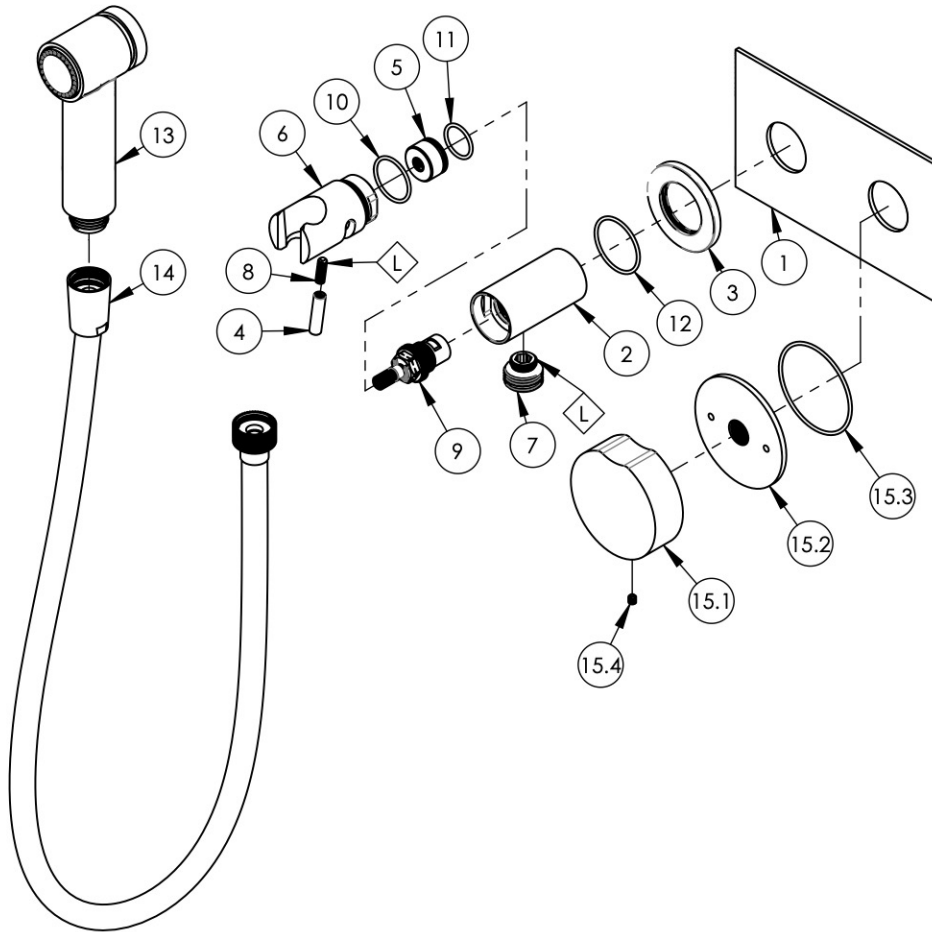
5. SILVER SOLDER JOINTS SHALL BE FULLY WETTED VIA CAPILLARY ACTION AND COMPLETELY NON-POROUS.

G

L

B

S



ITEM NO.	PART NUMBER	DESCRIPTION	QTY.
1	11212/00	PLATE, TWO HANDLE, BASIC SERIES	1
2	10859/00	BODY, HANDSHOWER HOLDER W/ INTEGRATED VOL. CTRL.	1
3	10860/00	ESCUTCHEON, FLANGE	1
4	10861/00	HANDLE, LEVER 10-24 UNC	1
5	10862/00	HIDDEN HUB, HANDSHOWER VOL. CTRL.	1
6	10863/00	SHOWER HOOK, INTEGRATED HANDLE	1
7	P18011/00	CONNECTOR OUTLET 1/2"	1
8	92152	SET SCREW, CUP PT. 10-24 UNC X 5/8"L	1
9	10739	CARTRIDGE, VALVE 3/8"G RIGHT CLOSING	1
10	90021	O-RING, 15/16"ID X 1-1/16"OD X 1/16"THK, AS-568-021	1
11	90017	O-RING, 11/16"ID X 13/16"OD X 1/16"THK, AS-568-017	1
12	90025	O-RING, 1-3/16"ID X 1/16"THK, AS-568-025	1
13	3-410/00	ASSY, HAND SPRAY	1
14	3-049/00	ASSY, HOSE KIT, HANDSHOWER	1
15	3-796/00	ROUND BRASS HANDLE, WALL LAV, MOUNT ASSY	1
15.1	12175/00	ROUND HANDLE, BRASS	1
15.2	30545/00	ESCUTCHEON, WALL MOUNT, SHOWER	1
15.3	90033	O-RING, 2"ID X 2-1/8"OD X 1/16"THK, AS-568-033	1
15.4	92008	SET SCREW, CUP POINT 8-32, 3/16" L.	1

ZONE	REV.	DESCRIPTION	DATE	APPROVED
------	------	-------------	------	----------

REVISIONS

**PROPRIETARY AND CONFIDENTIAL**  
THE INFORMATION CONTAINED IN THIS DRAWING IS THE SOLE PROPERTY OF PHYLRICH. ANY REPRODUCTION IN PART OR AS A WHOLE WITHOUT THE WRITTEN PERMISSION OF PHYLRICH IS PROHIBITED.  
**DO NOT SCALE DRAWING**

TRIM, WALL MOUNTED BIDET, ROUND BRASS HANDLE, CIRC

SIZE	ASM/PRT NO.	REV
<b>A</b>	250-64/00	-

SCALE: 1:4      WEIGHT: lbs.      SHEET 1 OF 2

1261 LOGAN AVENUE  
COSTA MESA, CALIFORNIA 92626  
PHONE: 714.361.4800  
FAX: 714.617.3120

**PHYLRICH**<sup>®</sup>  
Defining Luxury Since 1959