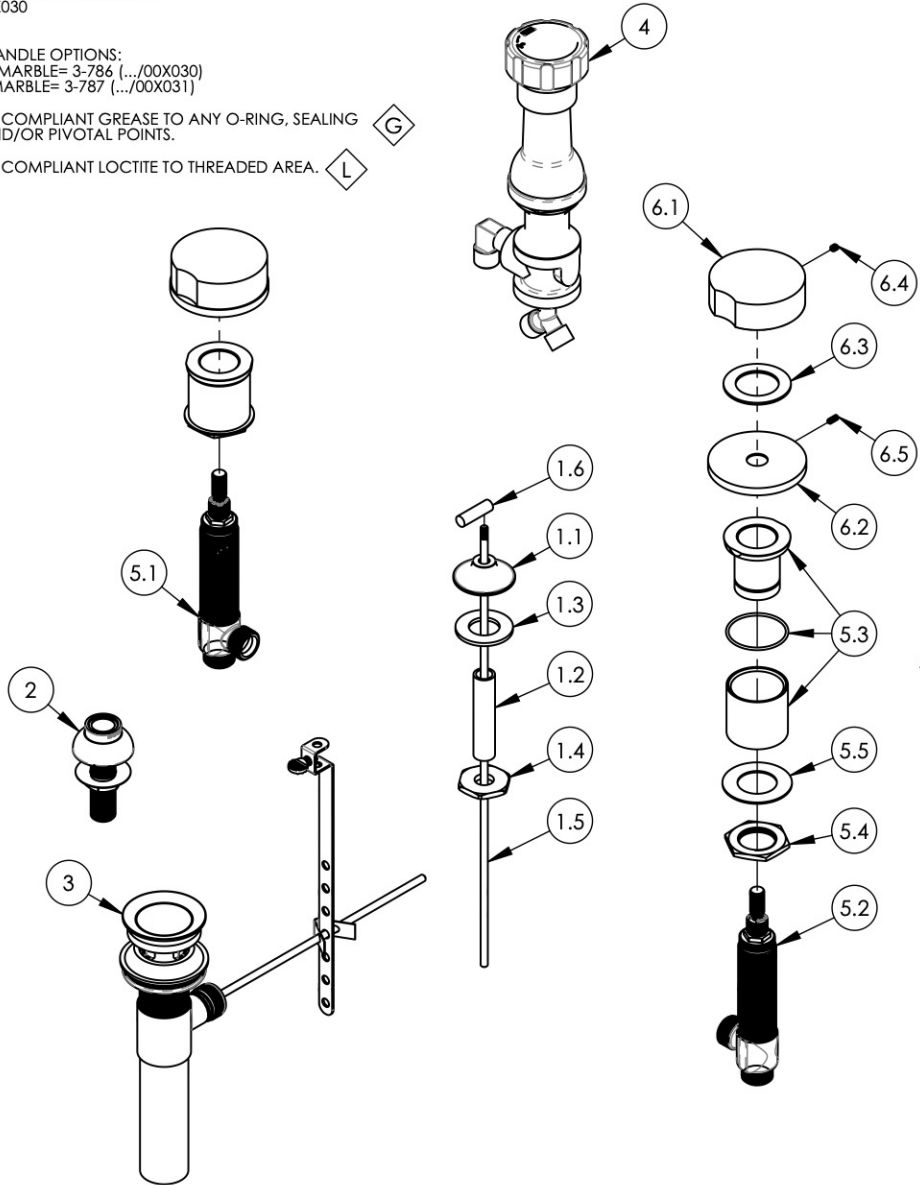


NOTE(S):
 1. EXAMPLE OF SPLIT FINISH CODE:
 A. 230-03X030

2. MARBLE HANDLE OPTIONS:
 A. BLACK MARBLE= 3-786 (.../00X030)
 B. WHITE MARBLE= 3-787 (.../00X031)

3. APPLY NSF COMPLIANT GREASE TO ANY O-RING, SEALING JOINTS, AND/OR PIVOTAL POINTS. G

4. APPLY NSF COMPLIANT LOCTITE TO THREADED AREA. L



SEE NOTES*

ITEM NO.	PART NUMBER	DESCRIPTION	QTY.
1	3-192/00	POP-UP ROD BIDET, BASIC	1
1.1	P09007/00	K4160 POP UP GUIDE	1
1.2	P32010	9/16-20 x 56 NIPPLE FOR COMPRESSION STEM	1
1.3	P35026	3/4" SAE FLAT WASHER	1
1.4	P09006	SPECIAL HEX F/BIDET SPRAYER	1
1.5	10719/00	POP-UP ROD, 10-24, 14" LONG	1
1.6	P04019/00	POP-UP, BASIC, W/ 10-24 THREAD	1
2	3-085/00	ASSY, BIDET SPRAYER	1
3	3-046/00	POP-UP DRAIN ASSEMBLY (2-101, 2-102, & 2-246)	1
4	3-160/00	BIDET DIVERTER, COMPLETE	1
5	1-700	WIDESPREAD VALVE 16PT, HOT & COLD, W/ FLUSH MOUNTING KITS	1
5.1	1-149	WIDESPREAD VALVE LAV 16PT, HOT, ONLY	1
5.2	1-150	WIDESPREAD VALVE LAV 16PT, COLD, ONLY	1
5.3	2-410	RECESSED FLUSHED MOUNTING KIT FOR WIDESPREAD W/O WASHER/NUT	2
5.4	92251	HEX NUT, 1"-20 THREAD	2
5.5	92252	WASHER, 1-1/32" ID 1-13/16" OD	2
6	3-820/00	ASSY, ROUND BLACK MARBLE HANDLE, CIRC	2
6.1	2-408	BLACK MARBLE HANDLE, BROACH INSERT, ASSY	1
6.2	12347/00	ESCUTCHEON BASE, DECK TUB, CIRC	1
6.3	92345	WASHER	1
6.4	92008	SET SCREW, CUP POINT 8-32, 3/16" L.	1
6.5	92303	SET SCREW, CUP POINT 6-32 X 5/16" L.	1

ZONE	REV.	DESCRIPTION	DATE	APPROVED
------	------	-------------	------	----------

REVISIONS

1261 LOGAN AVENUE
 COSTA MESA, CALIFORNIA 92626
 PHONE: 714.361.4800
 FAX: 714.617.3120

PHYLIRICH[®]
 Defining Luxury Since 1959

PROPRIETARY AND CONFIDENTIAL
 THE INFORMATION CONTAINED IN THIS DRAWING IS THE SOLE PROPERTY OF PHYLIRICH. ANY REPRODUCTION IN PART OR AS A WHOLE WITHOUT THE WRITTEN PERMISSION OF PHYLIRICH IS PROHIBITED.
DO NOT SCALE DRAWING

FOUR HOLE BIDET, ROUND MARBLE HANDLES, CIRC

SIZE
A

ASM/PRT NO.
250-62/00

REV
 -

SCALE: 1:5

WEIGHT: lbs.

SHEET 1 OF 2