

NOTE(S):

1. EXAMPLE OF SPLIT FINISH CODE:  
A. 4-710/026X030

2. MARBLE HANDLE STONE OPTIONS:

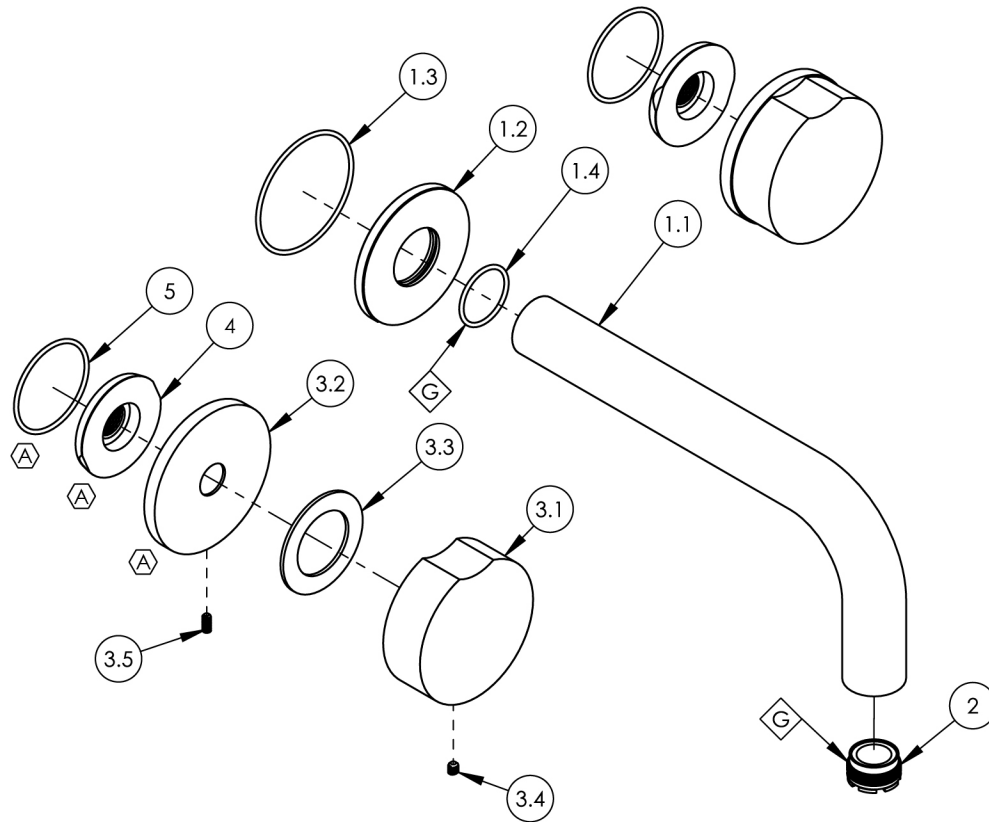
- A. BLACK MARBLE = 3-820 (.../00X030)  
B. WHITE MARBLE = 3-826 (.../00X031)

3. APPLY NSF COMPLIANT GREASE TO ANY O-RING, SEALING JOINTS, AND/OR PIVOTAL POINTS.

4. APPLY NSF COMPLIANT LOCTITE TO THREADED AREA.



SEE NOTES\*



| ITEM NO. | PART NUMBER | DESCRIPTION   | QTY. |
|----------|-------------|---|------|
| 1        | 3-794/00    | WALL SPOUT & FLANGE, ASSY                           | 1    |
| 1.1      | P19018/00   | 7-1/2" WALL LAV SPOUT, BASIC SERIES                 | 1    |
| 1.2      | 12269/00    | FLANGE, WALL SPOUT, CIRC                            | 1    |
| 1.3      | 90033       | O-RING, 2"ID X 2-1/8"OD X 1/16"THK, AS-568-033      | 1    |
| 1.4      | 90021       | O-RING, 15/16"ID X 1-1/16"OD X 1/16"THK, AS-568-021 | 1    |
| 2        | P05024      | AERATOR CACHE COIN SLOT, M21.5X1.0 FULL FLOW        | 1    |
| 3        | 3-820/00    | ASSY, ROUND BLACK MARBLE HANDLE, CIRC               | 2    |
| 3.1      | 2-408       | BLACK MARBLE HANDLE, BROACH INSERT, ASSY            | 1    |
| 3.2      | 12347/00    | ESCUTCHEON BASE, DECK TUB, CIRC                     | 1    |
| 3.3      | 92345       | WASHER  | 1    |
| 3.4      | 92008       | SET SCREW, CUP POINT 8-32, 3/16" L.                 | 1    |
| 3.5      | 92303       | SET SCREW, CUP POINT 6-32 X 5/16" L                 | 1    |
| 4        | 11003       | SLEEVE MOUNT, WALL MT WIDESPREAD                    | 2    |
| 5        | 90029       | O-RING, 1-5/8"ID X 1-3/4"OD X 1/16"THK, AS-568-029  | 2    |

| B5, C5 | A    | ADDED COMPONENTS FOR STANDARD WALL FLUSH MOUNT | 10/22/2024 | RAH      |
|--------|------|--|------------|----------|
| ZONE   | REV. | DESCRIPTION                                    | DATE       | APPROVED |

REVISIONS

1261 LOGAN AVENUE  
COSTA MESA, CALIFORNIA 92626  
PHONE: 714.361.4800  
FAX: 714.617.3120

**PHYLIRICH®**  
Defining Luxury Since 1959

PROPRIETARY AND CONFIDENTIAL  
THE INFORMATION CONTAINED IN THIS DRAWING  
IS THE SOLE PROPERTY OF PHYLIRICH. ANY  
REPRODUCTION IN PART OR AS A WHOLE  
WITHOUT THE WRITTEN PERMISSION OF PHYLIRICH  
IS PROHIBITED.  
DO NOT SCALE DRAWING

WALL TUB, ROUND MARBLE HANDLES,  
CIRC SERIES

| SIZE       | ASM/PRT NO.      | REV          |
|------------|------------------|--------------|
| <b>A</b>   | <b>250-58/00</b> | <b>A</b>     |
| SCALE: 1:3 | WEIGHT: lbs.     | SHEET 1 OF 2 |