

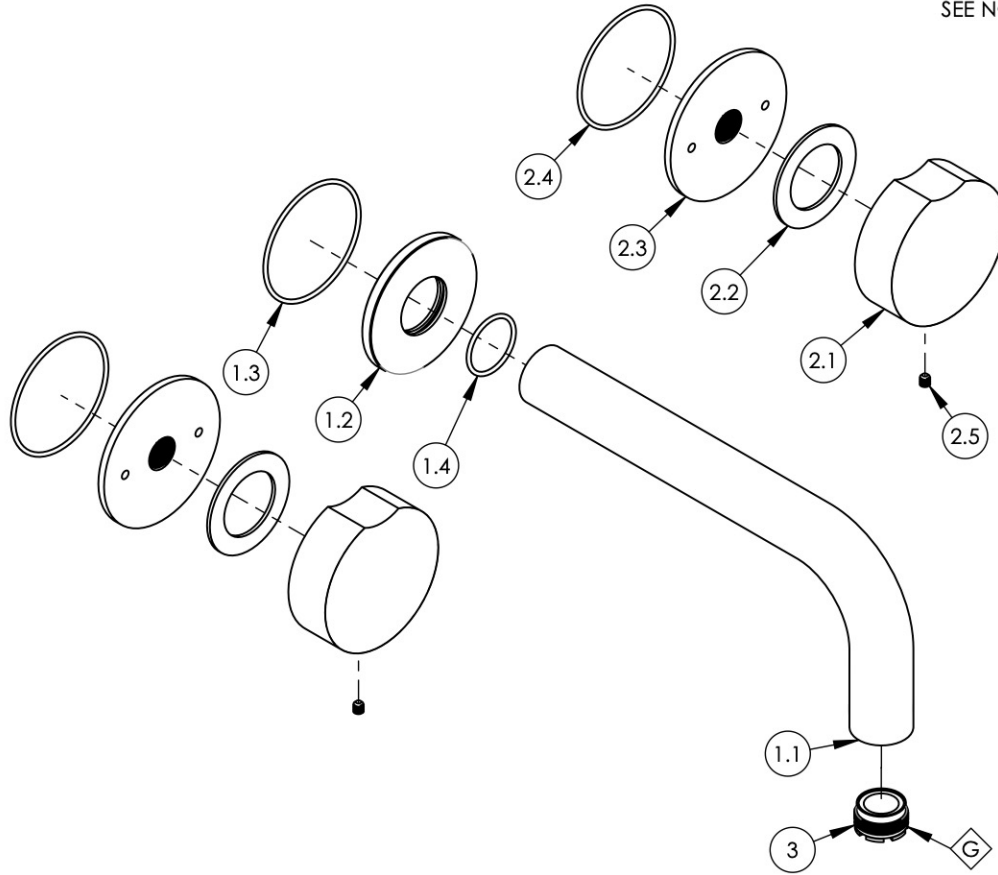
NOTE(S):
 1. EXAMPLE OF SPLIT FINISH CODE:
 A. 230-03X030

2. MARBLE HANDLE OPTIONS:
 A. BLACK MARBLE= 3-798 (.../00X030)
 B. WHITE MARBLE= 3-797 (.../00X031)

3. APPLY NSF COMPLIANT GREASE TO ANY O-RING, SEALING JOINTS, AND/OR PIVOTAL POINTS. G

4. APPLY NSF COMPLIANT LOCTITE TO THREADED AREA. L

SEE NOTES*



ITEM NO.	PART NUMBER	DESCRIPTION	QTY.
1	3-794/00	WALL SPOUT & FLANGE, ASSY	1
1.1	P19018/00	7-1/2" WALL LAV SPOUT, BASIC SERIES	1
1.2	12269/00	FLANGE, WALL SPOUT, CIRC	1
1.3	90033	O-RING, 2"ID X 2-1/8"OD X 1/16"THK, AS-568-033	1
1.4	90021	O-RING, 15/16"ID X 1-1/16"OD X 1/16"THK, AS-568-021	1
2	3-798/00	ROUND BLACK MARBLE HANDLE, WALL LAV, MOUNT ASSY	2
2.1	2-408	BLACK MARBLE HANDLE W/ BROACH INSERT	1
2.2	92345	WASHER	1
2.3	30545/00	ESCUTCHEON, WALL MOUNT, SHOWER	1
2.4	90033	O-RING, 2"ID X 2-1/8"OD X 1/16"THK, AS-568-033	1
2.5	92008	SET SCREW, CUP POINT 8-32, 3/16" L.	1
3	P05024	AERATOR CACHE COIN SLOT, M21.5X1.0 FULL FLOW	1

ZONE	REV.	DESCRIPTION	DATE	APPROVED
------	------	-------------	------	----------

REVISIONS

1261 LOGAN AVENUE
 COSTA MESA, CALIFORNIA 92626
 PHONE: 714.361.4800
 FAX: 714.617.3120

PHYLIRICH[®]
 Defining Luxury Since 1959

PROPRIETARY AND CONFIDENTIAL
 THE INFORMATION CONTAINED IN THIS DRAWING IS THE SOLE PROPERTY OF PHYLIRICH. ANY REPRODUCTION IN PART OR AS A WHOLE WITHOUT THE WRITTEN PERMISSION OF PHYLIRICH IS PROHIBITED.
DO NOT SCALE DRAWING

WALL TUB, ROUND MARBLE HANDLES, CIRC

SIZE A	ASM/PRT NO. 250-58/00	REV -
SCALE: 1:3	WEIGHT: lbs.	SHEET 1 OF 2