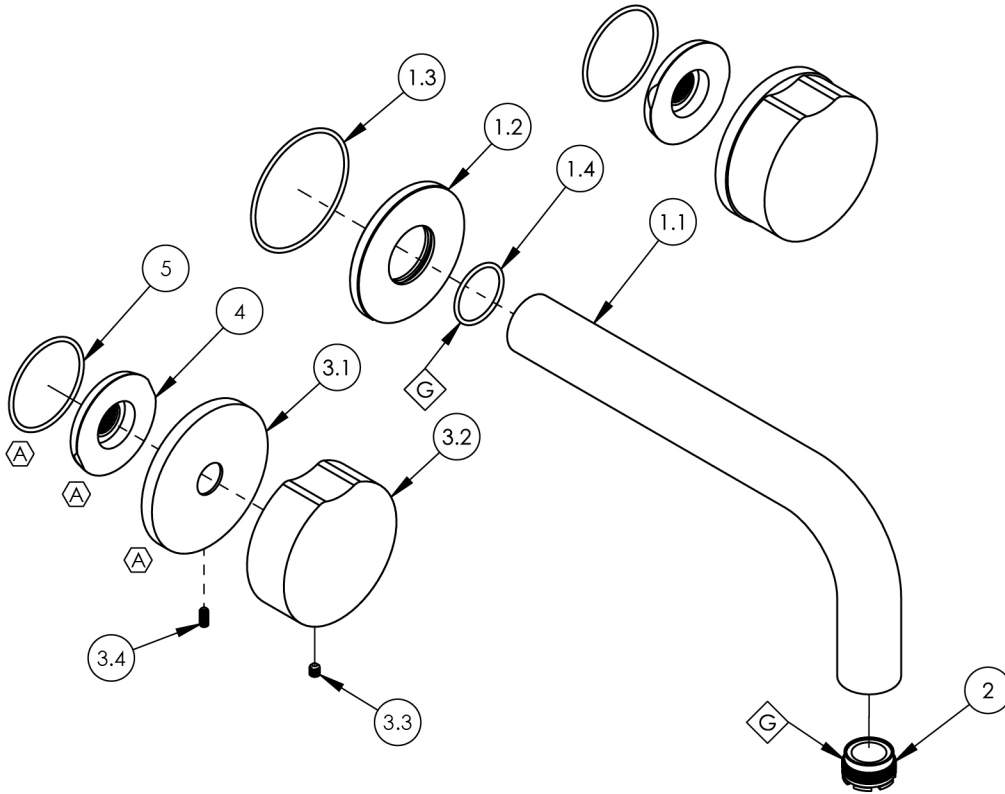


- NOTE(S):
1. PART NUMBER, "/00" DENOTES PART SHALL HAVE FINISH.
 2. APPLY NSF COMPLIANT GREASE TO ANY O-RING, SEALING JOINTS, AND/OR PIVOTAL POINTS.
 3. APPLY NSF COMPLIANT LOCTITE TO THREADED AREA.
 4. APPLY NSF COMPLIANT REMOVABLE (BLUE) LOCTITE TO THREADED AREA.
 5. SILVER SOLDER JOINTS SHALL BE FULLY WETTED VIA CAPILLARY ACTION AND COMPLETELY NON POROUS.



ITEM NO.	PART NUMBER	DESCRIPTION	QTY.
1	3-794/00	WALL SPOUT & FLANGE, ASSY	1
1.1	P19018/00	7-1/2" WALL LAV SPOUT, BASIC SERIES	1
1.2	12269/00	FLANGE, WALL SPOUT, CIRC	1
1.3	90033	O-RING, 2"ID X 2-1/8"OD X 1/16"THK, AS-568-033	1
1.4	90021	O-RING, 15/16"ID X 1-1/16"OD X 1/16"THK, AS-568-021	1
2	P05024	AERATOR CACHE COIN SLOT, M21.5X1.0 FULL FLOW	1
3	3-819/00	ASSY, ROUND BRASS HANDLE, CIRC	2
3.1	12347/00	ESCUTCHEON BASE, DECK TUB, CIRC	1
3.2	12175/00	ROUND HANDLE, BRASS	1
3.3	92008	SET SCREW, CUP POINT 8-32, 3/16" L.	1
3.4	92303	SET SCREW, CUP POINT 6-32 X 5/16" L	1
4	11003	SLEEVE MOUNT, WALL MT WIDESPREAD	2
5	90029	O-RING, 1-5/8"ID X 1-3/4"OD X 1/16"THK, AS-568-029	2

B5, C5	A	ADDED COMPONENTS FOR STANDARD WALL FLUSH MOUNT	10/22/2024	RAH
ZONE	REV.	DESCRIPTION	DATE	APPROVED

REVISIONS

1261 LOGAN AVENUE
COSTA MESA, CALIFORNIA 92626
PHONE: 714.361.4800
FAX: 714.617.3120

PHYLIRICH®
Defining Luxury Since 1959

PROPRIETARY AND CONFIDENTIAL
THE INFORMATION CONTAINED IN THIS DRAWING
IS THE SOLE PROPERTY OF PHYLIRICH. ANY
REPRODUCTION IN PART OR AS A WHOLE
WITHOUT THE WRITTEN PERMISSION OF PHYLIRICH
IS PROHIBITED.
DO NOT SCALE DRAWING

WALL TUB, ROUND BRASS HANDLES, CIRC
SERIES

SIZE	ASM/PRT NO.	REV
A	250-56/00	A
SCALE: 1:3	WEIGHT: lbs.	SHEET 1 OF 2