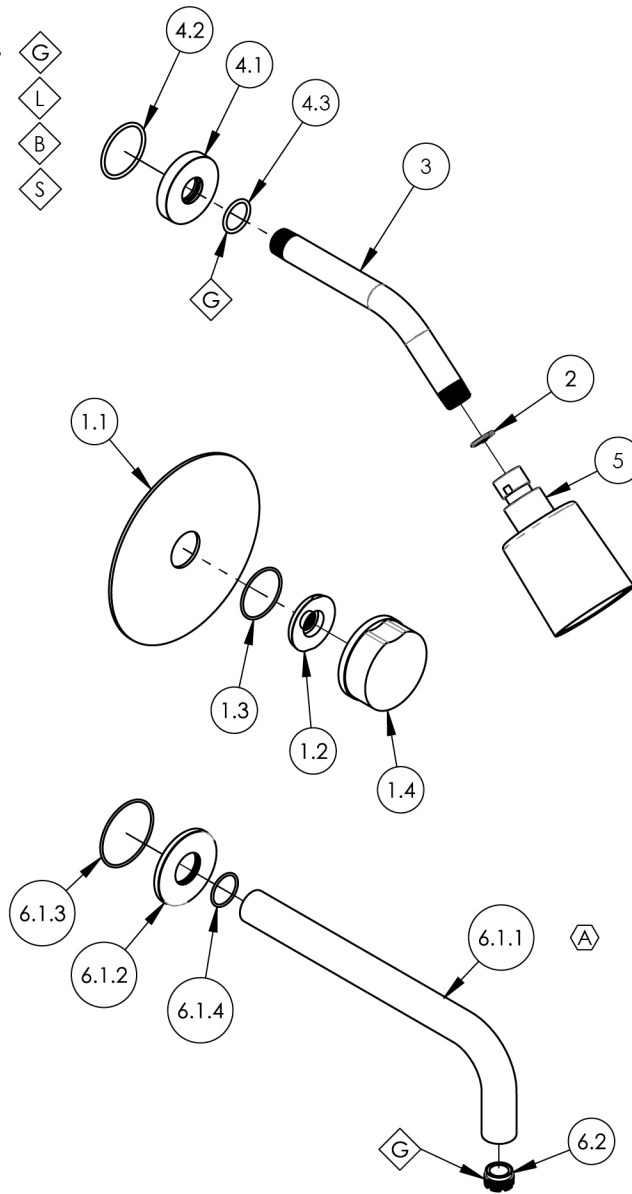


- NOTE(S):
1. PART NUMBER, "/00" DENOTES PART SHALL HAVE FINISH.
  2. APPLY NSF COMPLIANT GREASE TO ANY O-RING, SEALING JOINTS, AND/OR PIVOTAL POINTS.
  3. APPLY NSF COMPLIANT LOCTITE TO THREADED AREA.
  4. APPLY NSF COMPLIANT REMOVABLE (BLUE) LOCTITE TO THREADED AREA.
  5. SILVER SOLDER JOINTS SHALL BE FULLY WETTED VIA CAPILLARY ACTION AND COMPLETELY NON-POROUS.



ITEM NO.	PART NUMBER	DESCRIPTION	QTY.
1	4-714/00	ASSY, SINGLE HANDLE TRIM, ROUND BRASS HANDLE, CIRC	1
1.1	10443/00	TRIM PLATE 6" ROUND, BASIC II	1
1.2	11003	SLEEVE MOUNT, WALL MT WIDESPREAD	1
1.3	90029	O-RING, 1-5/8"ID X 1-3/4"OD X 1/16"THK, AS-568-029	1
1.4	3-819/00	ASSY, ROUND BRASS HANDLE, CIRC	1
2	11432	1.75 GPM FLOW REGULATOR	1
3	P16008/00	SHOWER ARM (8 INCH)	1
4	3-700/00	SHOWER FLANGE, CONTEMPORARY, ROUND	1
4.1	P16019/00	BASE SHOWER FLANGE, BASIC SERIES	1
4.2	90129	O-RING, 1-9/16"ID X 3/32THK, AS-568-129	1
4.3	90118	O-RING, 7/8"ID X 1-1/16"OD X 3/32"THK, AS-568-118	1
5	3-757/00	SHOWER HEAD, ROUND, 68MM	1
6	3-1030/00	WALL TUB SPOUT, 10" REACH, CIRC	1
6.1	3-985/00	WALL SPOUT & FLANGE, 10" L, ASSY	1
6.1.1	10479/00	10" WALL LAV SPOUT, BASIC SERIES	1
6.1.2	12269/00	FLANGE, WALL SPOUT, CIRC	1
6.1.3	90033	O-RING, 2"ID X 2-1/8"OD X 1/16"THK, AS-568-033	1
6.1.4	90021	O-RING, 15/16"ID X 1-1/16"OD X 1/16"THK, AS-568-021	1
6.2	P05024	AERATOR CACHE COIN SLOT, M21.5X1.0 FULL FLOW	1

B3	A	UPDATED SPOUT ASSEMBLY	2/23/2026	LLO
ZONE	REV.	DESCRIPTION	DATE	APPROVED

REVISIONS

1261 LOGAN AVENUE  
COSTA MESA, CALIFORNIA 92626  
PHONE: 714.361.4800  
FAX: 714.617.3120

**PHYLIRICH**<sup>®</sup>  
Defining Luxury Since 1959

PROPRIETARY AND CONFIDENTIAL  
THE INFORMATION CONTAINED IN THIS DRAWING IS THE SOLE PROPERTY OF PHYLIRICH. ANY REPRODUCTION IN PART OR AS A WHOLE WITHOUT THE WRITTEN PERMISSION OF PHYLIRICH IS PROHIBITED.  
DO NOT SCALE DRAWING

ASSY, ROUND BRASS HANDLE, PB TUB & SHOWER SET, 10" SPOUT, CIRC

SIZE	ASM/PRT NO.	REV
<b>A</b>	250-26-10/00	<b>A</b>
SCALE: 1:5.5	WEIGHT: lbs.	SHEET 1 OF 2