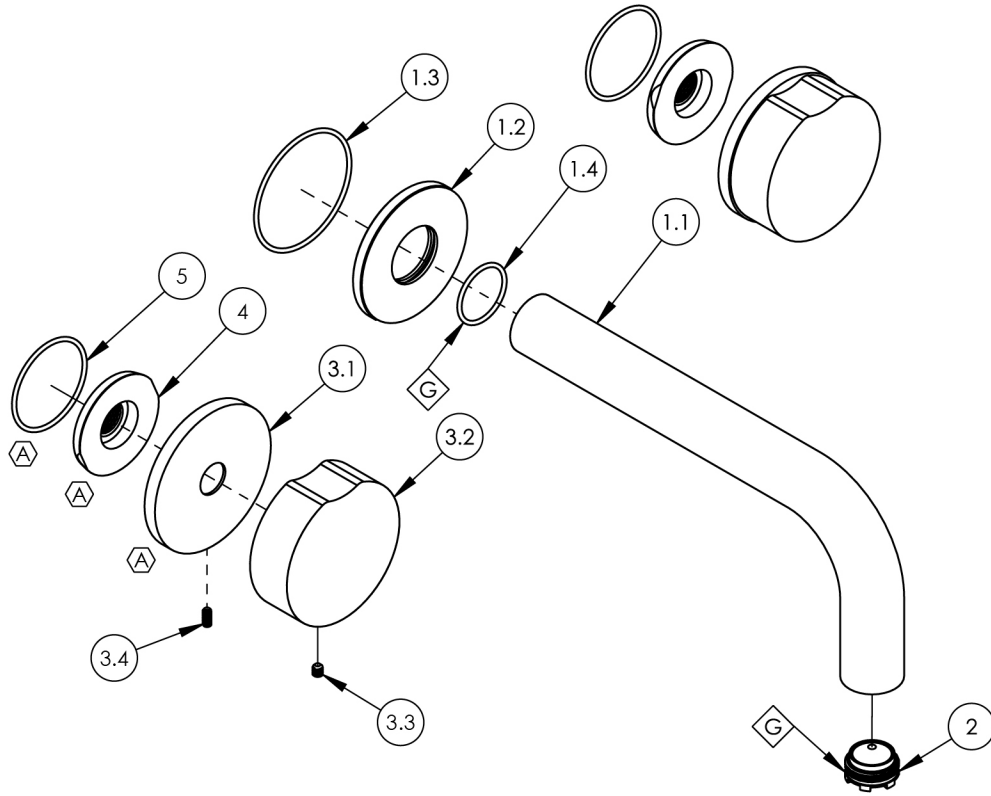


- NOTE(S):
 1. PART NUMBER, "/00" DENOTES PART SHALL HAVE FINISH.
 2. APPLY NSF COMPLIANT GREASE TO ANY O-RING, SEALING JOINTS, AND/OR PIVOTAL POINTS.
 3. APPLY NSF COMPLIANT LOCTITE TO THREADED AREA.
 4. APPLY NSF COMPLIANT REMOVABLE (BLUE) LOCTITE TO THREADED AREA.
 5. SILVER SOLDER JOINTS SHALL BE FULLY WETTED VIA CAPILLARY ACTION AND COMPLETELY NON POROUS.



ITEM NO.	PART NUMBER	DESCRIPTION	QTY.
1	3-794/00	WALL SPOUT & FLANGE, ASSY	1
1.1	P19018/00	7-1/2" WALL LAV SPOUT, BASIC SERIES	1
1.2	12269/00	FLANGE, WALL SPOUT, CIRC	1
1.3	90033	O-RING, 2"ID X 2-1/8"OD X 1/16"THK, AS-568-033	1
1.4	90021	O-RING, 15/16"ID X 1-1/16"OD X 1/16"THK, AS-568-021	1
2	11429	AERATOR CACHE JR, 1.2GPM, M21.5X1.0, 42.2260.450	1
3	3-819/00	ASSY, ROUND BRASS HANDLE, CIRC	2
3.1	12347/00	ESCUTCHEON BASE, DECK TUB, CIRC	1
3.2	12175/00	ROUND HANDLE, BRASS	1
3.3	92008	SET SCREW, CUP POINT 8-32, 3/16" L.	1
3.4	92303	SET SCREW, CUP POINT 6-32 X 5/16" L	1
4	11003	SLEEVE MOUNT, WALL MT WIDESPREAD	2
5	90029	O-RING, 1-5/8"ID X 1-3/4"OD X 1/16"THK, AS-568-029	2

B5, C5	A	ADDED COMPONENTS FOR STANDARD WALL FLUSH MOUNT	10/9/2024	RAH
ZONE	REV.	DESCRIPTION	DATE	APPROVED

REVISIONS

1261 LOGAN AVENUE
 COSTA MESA, CALIFORNIA 92626
 PHONE: 714.361.4800
 FAX: 714.617.3120

PHYLIRICH[®]
 Defining Luxury Since 1959

PROPRIETARY AND CONFIDENTIAL
 THE INFORMATION CONTAINED IN THIS DRAWING IS THE SOLE PROPERTY OF PHYLIRICH. ANY REPRODUCTION IN PART OR AS A WHOLE WITHOUT THE WRITTEN PERMISSION OF PHYLIRICH IS PROHIBITED.
 DO NOT SCALE DRAWING

WALL LAV, ROUND BRASS HANDLES, CIRC

SIZE A	ASM/PRT NO. 250-11/00	REV A
SCALE: 1:3	WEIGHT: lbs.	SHEET 1 OF 2