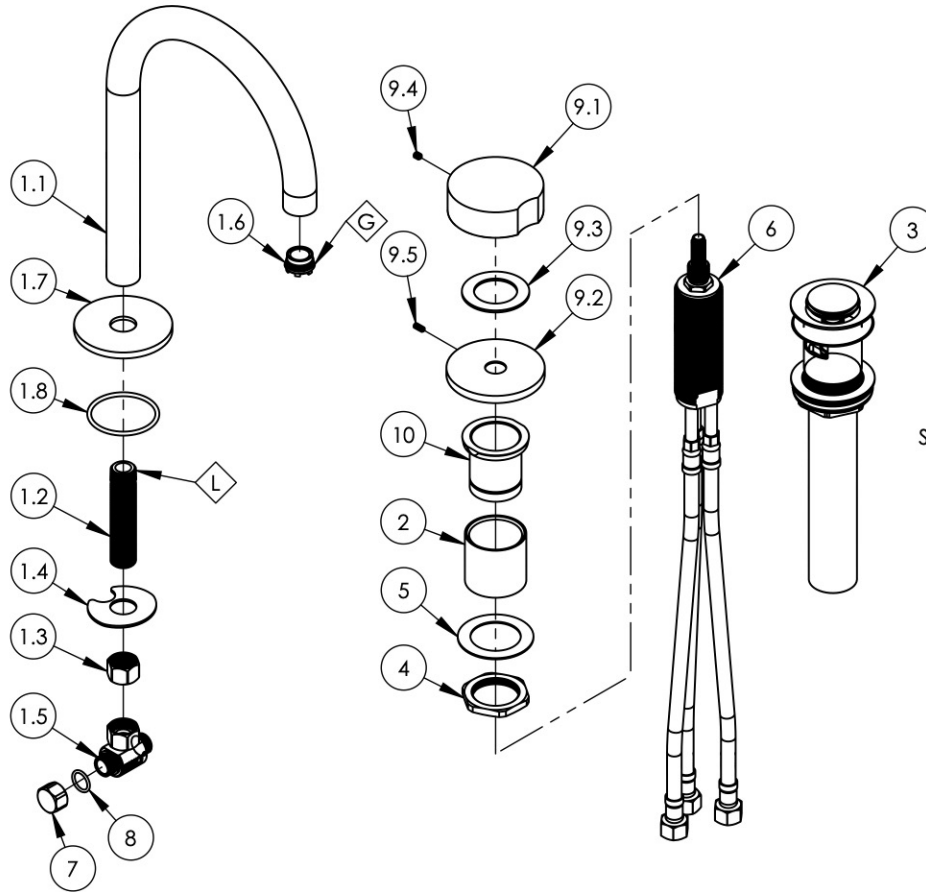


NOTE(S):
 1. EXAMPLE OF SPLIT FINISH CODE:
 A. 250-03X030

2. MARBLE HANDLE OPTIONS:
 A. BLACK MARBLE= 3-820 (.../00X030)
 B. WHITE MARBLE= 3-826 (.../00X031)

3. APPLY NSF COMPLIANT GREASE TO ANY O-RING, SEALING JOINTS, AND/OR PIVOTAL POINTS. G

4. APPLY NSF COMPLIANT LOCTITE TO THREADED AREA. L



SEE NOTES*

ITEM NO.	PART NUMBER	DESCRIPTION	QTY.
1	3-783/00	HIGH ARC SPOUT, LAV	1
1.1	11163/00	SPOUT TUBE 3/4", LAV	1
1.2	10745	THREAD ALL, 3/8"-18 NPSL - 3/8"NPT	1
1.3	10746	NUT, 3/8"-18 NPSL	1
1.4	92174	WASHER MOUNT WIDESPREAD (3/8")	1
1.5	1-112	TEE VALVE, 3/8" NPSM X 3/8" COMPRESSION	1
1.6	11428	AERATOR, CACHE TJ, 1.2GPM PCA PINK, 43.2260.450	1
1.7	30555/00	ESCUTCHEON, LAV SPOUT, FRONT STREET	1
1.8	90131	O-RING, 1-11/16ID X 3/32THK, AS-568-131	1
2	92180	EXTENSION SLEEVE, WIDESPREAD	1
3	3-545/00	BRASS PUSH TYPE DRAIN, W/ OVERFLOW & SMALL PLUG	1
4	92313	HEX NUT, 1-1/4"-20 THREAD	1
5	92138	BRASS WASHER, THIN	1
6	1-054	VALVE, DECK MOUNTED SINGLE HANDLE LAV DROP-IN	1
7	92492	CAP NUT, 3/8" COMPRESSION	1
8	90014	O-RING, 1/2"ID X 5/8"OD X 1/16"THK, AS-568-014	1
9	3-820/00	ASSY, ROUND BLACK MARBLE HANDLE, CIRC	1
9.1	2-408	BLACK MARBLE HANDLE, BROACH INSERT, ASSY	1
9.2	12347/00	ESCUTCHEON BASE, DECK TUB, CIRC	1
9.3	92345	WASHER	1
9.4	92008	SET SCREW, CUP POINT 8-32, 3/16" L.	1
9.5	92303	SET SCREW, CUP POINT 6-32 X 5/16" L.	1
10	11077	SLEEVE MOUNT, DECK (ROMAN) TUB	1

1261 LOGAN AVENUE
 COSTA MESA, CALIFORNIA 92626
 PHONE: 714.361.4800
 FAX: 714.617.3120

PHYLIRICH[®]
 Defining Luxury Since 1959

PROPRIETARY AND CONFIDENTIAL
 THE INFORMATION CONTAINED IN THIS DRAWING IS THE SOLE PROPERTY OF PHYLIRICH. ANY REPRODUCTION IN PART OR AS A WHOLE WITHOUT THE WRITTEN PERMISSION OF PHYLIRICH IS PROHIBITED.
DO NOT SCALE DRAWING

**WIDESPREAD FAUCET, HIGH SPOUT,
 SINGLE ROUND MARBLE HANDLE, CIRC
 SERIES**

SIZE **A** ASM/PRT NO. **250-06/00**

REV
 -

SCALE: 1:5

WEIGHT: lbs.

SHEET 1 OF 2