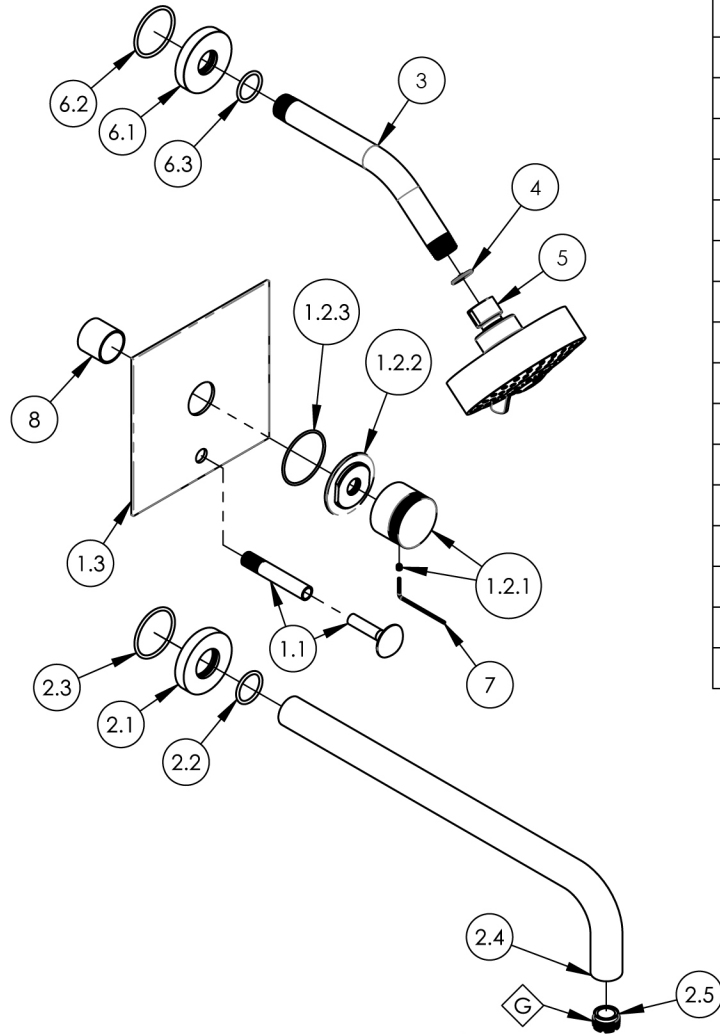


- NOTE(S):
- PART NUMBER, "/00" DENOTES PART SHALL HAVE FINISH.
  - APPLY NSF COMPLIANT GREASE TO ANY O-RING, SEALING JOINTS, AND/OR PIVOTAL POINTS.
  - APPLY NSF COMPLIANT LOCTITE TO THREADED AREA.
  - APPLY NSF COMPLIANT REMOVABLE (BLUE) LOCTITE TO THREADED AREA.
  - SILVER SOLDER JOINTS SHALL BE FULLY WETTED VIA CAPILLARY ACTION AND COMPLETELY NON-POROUS.



ITEM NO.	PART NUMBER	DESCRIPTION	QTY.
1	4-200/00	SHOWER PLATE W/DIVERTER & HANDLE TRIM SET, SQUARE PLATE, KNURLED HANDLE, BASIC II	1
1.1	3-125/00	DIVERTER EXTENSION ASSY FOR PB TUB & SHOWER SET	1
1.2	3-329/00	SUB ASSY. KNURLED HANDLE, BASIC II	1
1.2.1	2-247/00	HANDLE KNURLED, BASIC II	1
1.2.2	11164/00	ESCUTCHEON BASE, CONTEMP. BASIC II	1
1.2.3	90031	O-RING, 1-3/4"ID X 1/16"THK, AS-568-031	1
1.3	10959/00	SHOWER TRIM PLATE W/ DIVERTER HOLE, MIX SERIES	1
2	3-421/00	WALL TUB, SPOUT ONLY, 14" L, BASIC	1
2.1	P19017/00	ESCUTCHEON, FOR SPOUT	1
2.2	90119	O-RING, 15/16"ID X 1-1/8"OD X 3/32"THK, AS-568-119	1
2.3	90129	O-RING, 1-9/16"ID X 3/32THK, AS-568-129	1
2.4	10481/00	14" WALL LAV SPOUT, BASIC SERIES	1
2.5	P05024	AERATOR CACHE COIN SLOT, M21.5X1.0 FULL FLOW	1
3	P16008/00	SHOWER ARM (8 INCH)	1
4	11432	1.75 GPM FLOW REGULATOR	1
5	3-454/00	SHOWER HEAD 3 FUNCTION CONTEMP.	1
6	3-700/00	SHOWER FLANGE, CONTEMPORARY, ROUND	1
6.1	P16019/00	BASE SHOWER FLANGE, BASIC SERIES	1
6.2	90129	O-RING, 1-9/16"ID X 3/32THK, AS-568-129	1
6.3	90118	O-RING, 7/8"ID X 1-1/16"OD X 3/32"THK, AS-568-118	1
7	92021	HEX KEY 5/64, FOR 8-32 SET SCREW	1
8	10986	CENTERING PLATE SLEEVE	1

ZONE	REV.	DESCRIPTION	DATE	APPROVED
REVISIONS				

1261 LOGAN AVENUE  
COSTA MESA, CALIFORNIA 92626  
PHONE: 714.361.4800  
FAX: 714.617.3120

**PHYLIRICH**<sup>®</sup>  
Defining Luxury Since 1959

PROPRIETARY AND CONFIDENTIAL  
THE INFORMATION CONTAINED IN THIS DRAWING IS THE SOLE PROPERTY OF PHYLIRICH. ANY REPRODUCTION IN PART OR AS A WHOLE WITHOUT THE WRITTEN PERMISSION OF PHYLIRICH IS PROHIBITED.  
DO NOT SCALE DRAWING

PB TUB & SHOWER SET, SQUARE TRIM, SPOUT 14" W/ KNURLED HANDLE, BASIC II

SIZE	ASM/PRT NO.	REV
<b>A</b>	230S-26-14/00	-
SCALE: 1:6	WEIGHT: lbs.	SHEET 1 OF 2