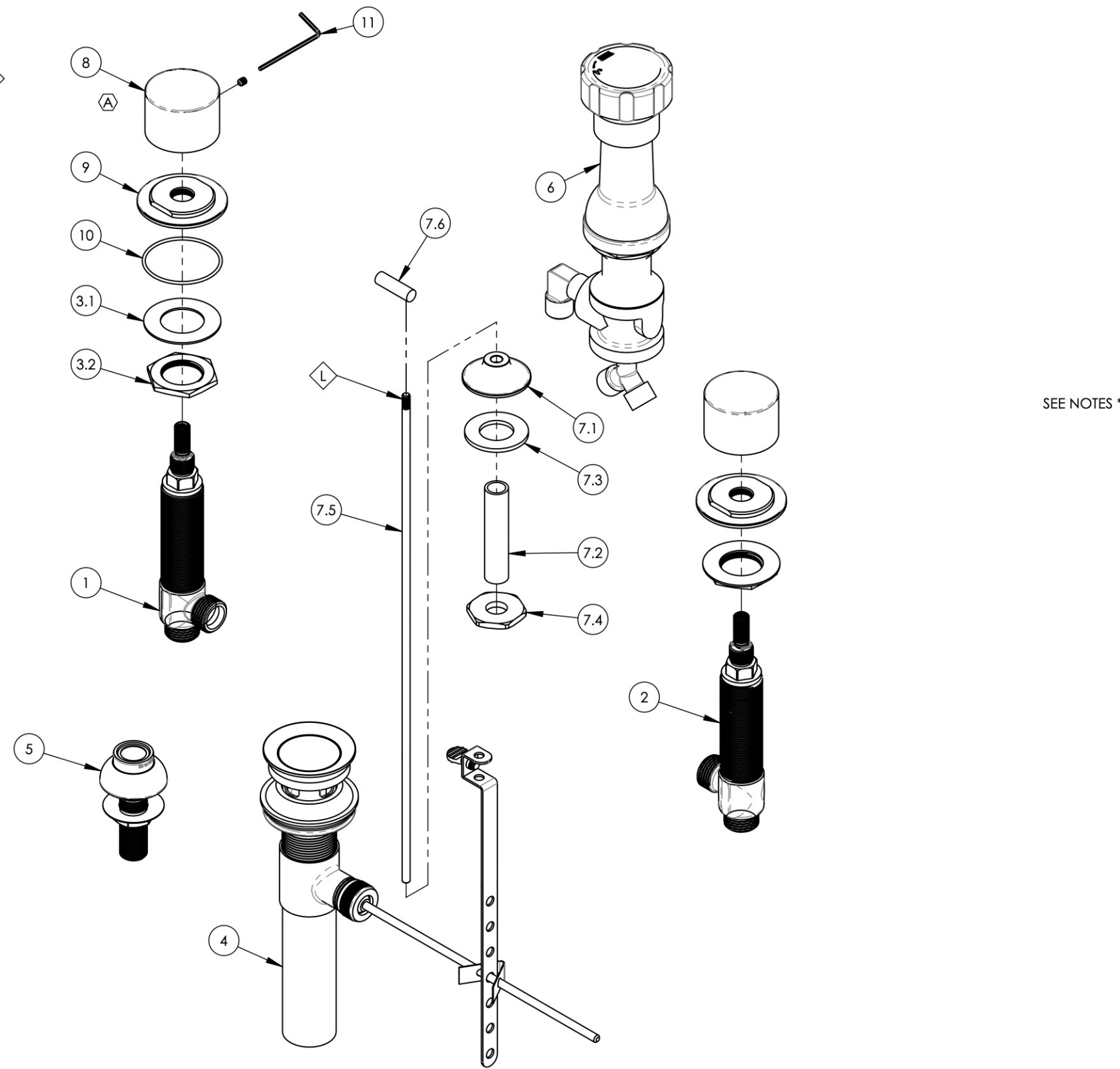


NOTE(S):
 1. EXAMPLE OF SPLIT FINISH CODE:
 A. 230-03/026X030
 2. MARBLE HANDLE STONE OPTIONS:
 A. BLACK MARBLE = 3-570 (.../00X030)
 B. WHITE MARBLE = 3-571 (.../00X031)
 C. SOAPSTONE = 3-572 (.../00X032)
 3. APPLY NSF COMPLIANT LOCTITE TO THREADED AREA L



ITEM NO.	PART NUMBER	DESCRIPTION	QTY.
1	1-149	WIDESPREAD VALVE LAV 16PT, HOT, ONLY	1
2	1-150	WIDESPREAD VALVE LAV 16PT, COLD, ONLY	1
3	2-203	MOUNTING NUT KIT, WIDESPREAD LAV	2
3.1	92252	WASHER, 1-1/32" ID 1-13/16" OD	1
3.2	92251	HEX NUT, 1"-20 THREAD	1
4	3-046/00	POP-UP DRAIN ASSEMBLY (2-101, 2-102, & 2-246)	1
5	3-085/00	ASSY, BIDET SPRAYER	1
6	3-160/00	BIDET DIVERTER, COMPLETE	1
7	3-192/00	POP-UP ROD BIDET, BASIC	1
7.1	P09007/00	K4160 POP UP GUIDE	1
7.2	P32010	9/16-20 x 56 NIPPLE FOR COMPRESSION STEM	1
7.3	P35026	3/4" SAE FLAT WASHER	1
7.4	P09006	SPECIAL HEX F/BIDET SPRAYER	1
7.5	10719/00	POP-UP ROD, 10-24, 14" LONG	1
7.6	P04019/00	POP-UP, BASIC, W/ 10-24 THREAD	1
8	3-570	HANDLE, ROUND MARBLE, BLACK (030) ASSY	2
9	11164/00	ESCUTCHEON BASE, CONTEMP. BASIC II	2
10	90031	O-RING, 1-3/4"ID X 1/16"THK, AS-568-031	2
11	P39001	HEX KEY 5/64, FOR 8-32 SET SCREW	1

SEE NOTES *

ZONE	REV.	DESCRIPTION	DATE	APPROVED
E6	A	REMOVE INTERNAL SUBASSY FROM HANDLE	11/3/2020	AMM
REVISIONS				

1261 LOGAN AVENUE
 COSTA MESA, CALIFORNIA 92626
 PHONE: 714.361.4800
 FAX: 714.617.3120

PHYLIRICH[®]
 Defining Luxury Since 1959

PROPRIETARY AND CONFIDENTIAL
 THE INFORMATION CONTAINED IN THIS DRAWING IS THE SOLE PROPERTY OF PHYLIRICH. ANY REPRODUCTION IN PART OR AS A WHOLE WITHOUT THE WRITTEN PERMISSION OF PHYLIRICH IS PROHIBITED.

APPLICATION	DATE	NAME	DATE
NEXT ASSY	USED ON		
MATERIAL			
FINISH			
CHECKED			

INTERPRET GEOMETRIC DIMENSIONING & TOLERANCING IN ACCORDANCE WITH ASME Y14.5-2009 & ASME Y14.41-2003 STANDARDS. UNLESS OTHERWISE SPECIFIED, DIMENSIONS ARE IN INCHES. TOLERANCES ARE:

FRACTIONS	DECIMALS	ANGULAR
±1/16"	X.X: ±.1 X.XX: ±.01 X.XXX: ±.005	±2°

DO NOT SCALE DRAWING

FOUR HOLE BIDET SET, MARBLE HANDLES, BASIC II

SIZE	ASM/PRT NO.	REV
B	230-62/00	A

SCALE: 1:3 WEIGHT: lbs. SHEET 1 OF 2