

NOTE(S):
1. PART NUMBER, "/00" DENOTES PART SHALL HAVE FINISH.

2. APPLY NSF COMPLIANT GREASE TO ANY O-RING, SEALING JOINTS, AND/OR PIVOTAL POINTS.

3. APPLY NSF COMPLIANT LOCTITE TO THREADED AREA:

4. APPLY NSF COMPLIANT REMOVABLE (BLUE) LOCTITE TO THREADED AREA:

5. SILVER SOLDER JOINTS SHALL BE FULLY WETTED VIA CAPILLARY ACTION AND COMPLETELY NON-POROUS:

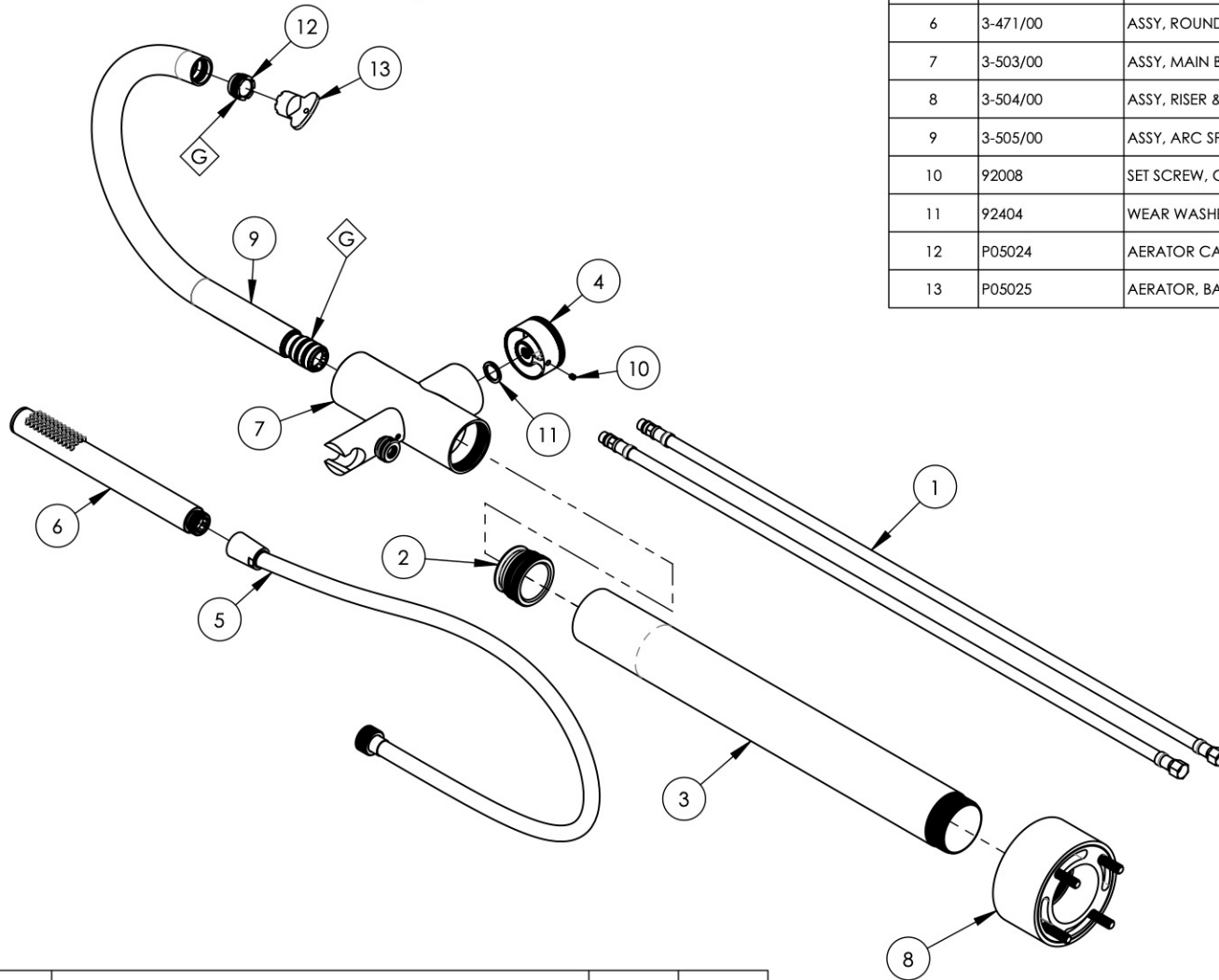
G

L

B

S

ITEM NO.	PART NUMBER	DESCRIPTION	QTY.
1	11366	HOSE, SUPPLY, FREE STANDING TUB FILLER	2
2	11367	CONNECTOR, BODY TO RISER	1
3	12189/00	RISER, SUPPLY TUBE, SHORT	1
4	12191/00	HANDLE, KNURLED, TUB FILLER, BASIC II	1
5	3-049/00	ASSY, HOSE KIT, HANDSHOWER	1
6	3-471/00	ASSY, ROUND HANDSHOWER, CONTEMPORARY	1
7	3-503/00	ASSY, MAIN BODY, TUB-FILLER, W/ SHOWER HOOK	1
8	3-504/00	ASSY, RISER & BASE, FLOOR MOUNT TUB FILLER	1
9	3-505/00	ASSY, ARC SPOUT, FLOOR MOUNT TUB FILLER	1
10	92008	SET SCREW, CUP POINT 8-32, 3/16" L.	1
11	92404	WEAR WASHER, HANDLE	1
12	P05024	AERATOR CACHE COIN SLOT, M21.5X1.0 FULL FLOW	1
13	P05025	AERATOR, BASIC KEY, PLASTIC RED	1



ZONE	REV.	DESCRIPTION	DATE	APPROVED
------	------	-------------	------	----------

REVISIONS

1261 LOGAN AVENUE
COSTA MESA, CALIFORNIA 92626
PHONE: 714.361.4800
FAX: 714.617.3120

PHYL RICH[®]
Defining Luxury Since 1959

PROPRIETARY AND CONFIDENTIAL
THE INFORMATION CONTAINED IN THIS DRAWING IS THE SOLE PROPERTY OF PHYL RICH. ANY REPRODUCTION IN PART OR AS A WHOLE WITHOUT THE WRITTEN PERMISSION OF PHYL RICH IS PROHIBITED.
DO NOT SCALE DRAWING

**FLOOR MOUNT TUB FILLER W/
HANDSHOWER SET, SINGLE HOLE SHORT,
HIGH SPOUT W/ KNURLED, BASIC II**

SIZE A	ASM/PRT NO. 230-44-03/00	REV -
SCALE: 1:6	WEIGHT: lbs.	SHEET 1 OF 2