

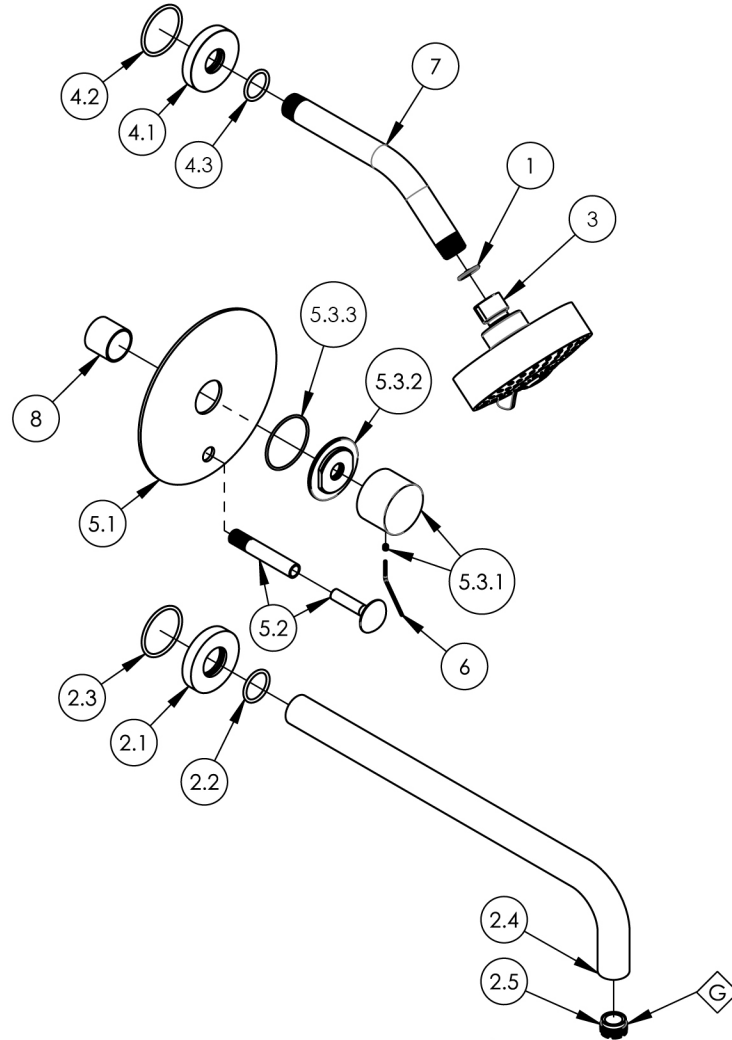
NOTE(S):
 1. PART NUMBER, "/00" DENOTES PART SHALL HAVE FINISH.

2. APPLY NSF COMPLIANT GREASE TO ANY O-RING, SEALING JOINTS, AND/OR PIVOTAL POINTS.

3. APPLY NSF COMPLIANT LOCTITE TO THREADED AREA.

4. APPLY NSF COMPLIANT REMOVABLE (BLUE) LOCTITE TO THREADED AREA.

5. SILVER SOLDER JOINTS SHALL BE FULLY WETTED VIA CAPILLARY ACTION AND COMPLETELY NON POROUS.



ITEM NO.	PART NUMBER	DESCRIPTION	QTY.
1	11432	1.75 GPM FLOW REGULATOR	1
2	3-421/00	WALL TUB, SPOUT ONLY, 14" L, BASIC	1
2.1	P19017/00	ESCUTCHEON, FOR SPOUT	1
2.2	90119	O-RING, 15/16"ID X 1-1/8"OD X 3/32"THK, AS-568-119	1
2.3	90129	O-RING, 1-9/16"ID X 3/32"THK, AS-568-129	1
2.4	10481/00	14" WALL LAV SPOUT, BASIC SERIES	1
2.5	P05024	AERATOR CACHE COIN SLOT, M21.5X1.0 FULL FLOW	1
3	3-454/00	SHOWER HEAD 3 FUNCTION CONTEMP.	1
4	3-700/00	SHOWER FLANGE, CONTEMPORARY, ROUND	1
4.1	P16019/00	BASE SHOWER FLANGE, BASIC SERIES	1
4.2	90129	O-RING, 1-9/16"ID X 3/32"THK, AS-568-129	1
4.3	90118	O-RING, 7/8"ID X 1-1/16"OD X 3/32"THK, AS-568-118	1
5	4-197/00	SHOWER PLATE W/ DIVERTER, SMOOTH HANDLE, BASIC II	1
5.1	10445/00	TRIM PLATE 6" ROUND W/ DIVERTER HOLE, BASIC II	1
5.2	3-125/00	DIVERTER EXTENSION ASSY FOR PB TUB & SHOWER SET	1
5.3	3-386/00	SUB ASSY. SMOOTH HANDLE, BASIC II	1
5.3.1	2-248/00	HANDLE SMOOTH, BASIC II	1
5.3.2	11164/00	ESCUTCHEON BASE, CONTEMP. BASIC II	1
5.3.3	90031	O-RING, 1-3/4"ID X 1/16"THK, AS-568-031	1
6	92021	HEX KEY 5/64, FOR 8-32 SET SCREW	1
7	P16008/00	SHOWER ARM (8 INCH)	1
8	10986	CENTERING PLATE SLEEVE	1

ZONE	REV.	DESCRIPTION	DATE	APPROVED
REVISIONS				

1261 LOGAN AVENUE COSTA MESA, CALIFORNIA 92626 PHONE: 714.361.4800 FAX: 714.617.3120	<h1>PHYLIRICH®</h1> <p>Defining Luxury Since 1959</p>	PROPRIETARY AND CONFIDENTIAL THE INFORMATION CONTAINED IN THIS DRAWING IS THE SOLE PROPERTY OF PHYLIRICH. ANY REPRODUCTION IN PART OR AS A WHOLE WITHOUT THE WRITTEN PERMISSION OF PHYLIRICH IS PROHIBITED. DO NOT SCALE DRAWING
---	---	--

SHOWER TRIM SET, PB, TUB & SHOWER, SPOUT 14" W/ SMOOTH, BASIC II

SIZE A	ASM/PRT NO. 230-27-14/00	REV -
SCALE: 1:6	WEIGHT: lbs.	SHEET 1 OF 2