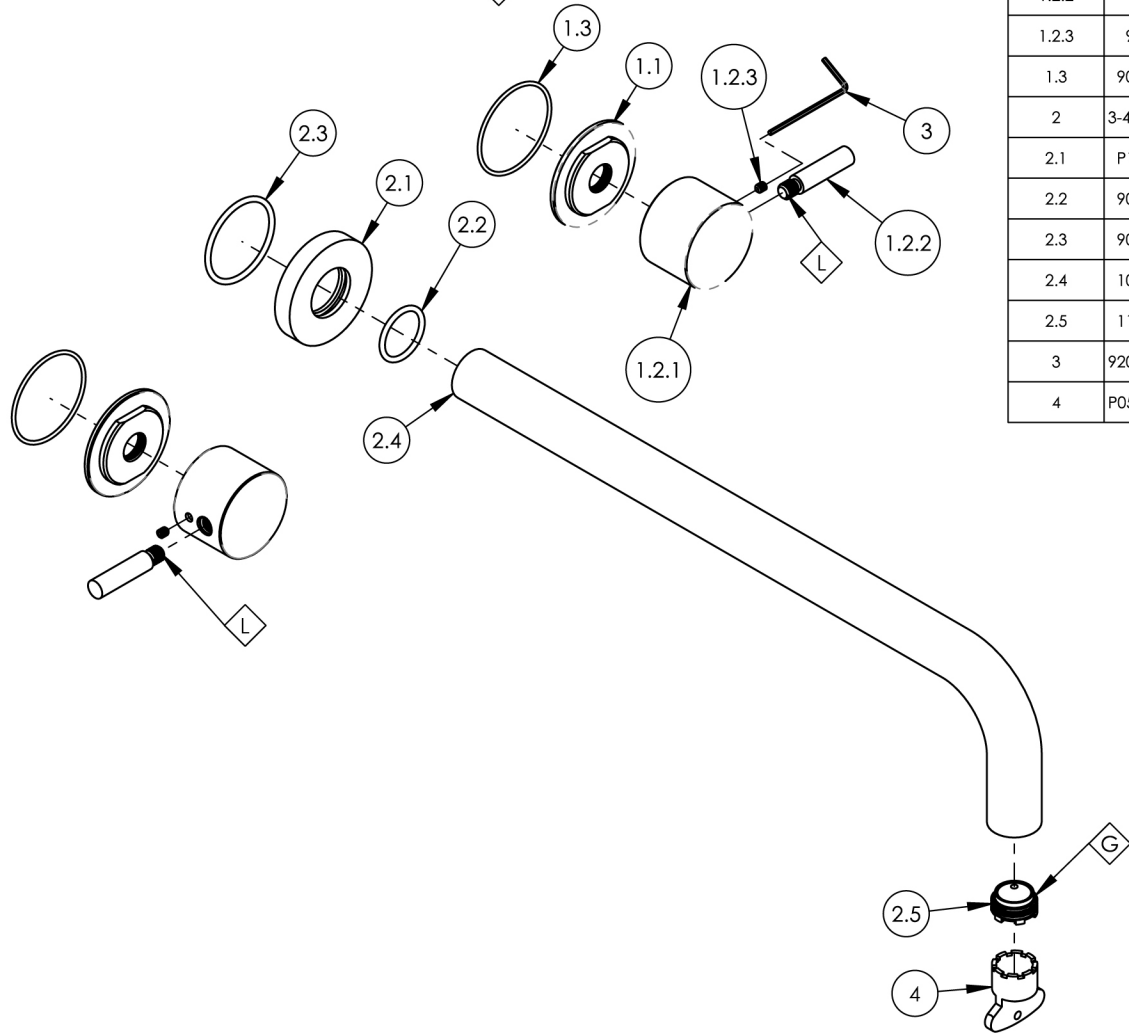


- NOTE(S):
1. PART NUMBER, "/00" DENOTES PART SHALL HAVE FINISH.
  2. APPLY NSF COMPLIANT GREASE TO ANY O-RING, SEALING JOINTS, AND/OR PIVOTAL POINTS.
  3. APPLY NSF COMPLIANT LOCTITE TO THREADED AREA.
  4. APPLY NSF COMPLIANT REMOVABLE (BLUE) LOCTITE TO THREADED AREA.
  5. SILVER SOLDER JOINTS SHALL BE FULLY WETTED VIA CAPILLARY ACTION AND COMPLETELY NON-POROUS.



ITEM NO.	PART NUMBER	DESCRIPTION	QTY.
1	3-339/00	SUB ASSY. LEVER HANDLE, BASIC II	2
1.1	11164/00	ESCUTCHEON BASE, CONTEMP. BASIC II	1
1.2	2-249/00	HANDLE LEVER, BASIC II	1
1.2.1	11167/00	BASE HANDLE, CONTEMP. BASIC II	1
1.2.2	11168/00	HANDLE LEVER, CONTEMP. BASIC II	1
1.2.3	92008	SET SCREW, CUP POINT 8-32, 3/16" L.	1
1.3	90031	O-RING, 1-3/4"ID X 1/16"THK, AS-568-031	1
2	3-417/00	WALL LAV, SPOUT ONLY, 14" L, BASIC	1
2.1	P19017/00	ESCUTCHEON, FOR SPOUT	1
2.2	90119	O-RING, 15/16"ID X 1-1/8"OD X 3/32"THK, AS-568-119	1
2.3	90129	O-RING, 1-9/16"ID X 3/32THK, AS-568-129	1
2.4	10481/00	14" WALL LAV SPOUT, BASIC SERIES	1
2.5	11429	AERATOR CACHE JR, 1.2GPM, M21.5X1.0, 42.2260.450	1
3	92021	HEX KEY 5/64, FOR 8-32 SET SCREW	1
4	P05025	AERATOR, BASIC KEY, PLASTIC RED	1

ZONE	REV.	DESCRIPTION	DATE	APPROVED
REVISIONS				

1261 LOGAN AVENUE COSTA MESA, CALIFORNIA 92626  PHONE: 714.361.4800 FAX: 714.617.3120	<h1>PHYLIRICH®</h1> <p>Defining Luxury Since 1959</p>	PROPRIETARY AND CONFIDENTIAL THE INFORMATION CONTAINED IN THIS DRAWING IS THE SOLE PROPERTY OF PHYLIRICH. ANY REPRODUCTION IN PART OR AS A WHOLE WITHOUT THE WRITTEN PERMISSION OF PHYLIRICH IS PROHIBITED.  DO NOT SCALE DRAWING	<h2>WALL LAV SET, SPOUT 14" W/ LEVER, BASIC II</h2>
---	---	--	---

SIZE	ASM/PRT NO.	REV
<b>A</b>	230-14-14/00	-
SCALE: 1:3.5	WEIGHT: lbs.	SHEET 1 OF 2