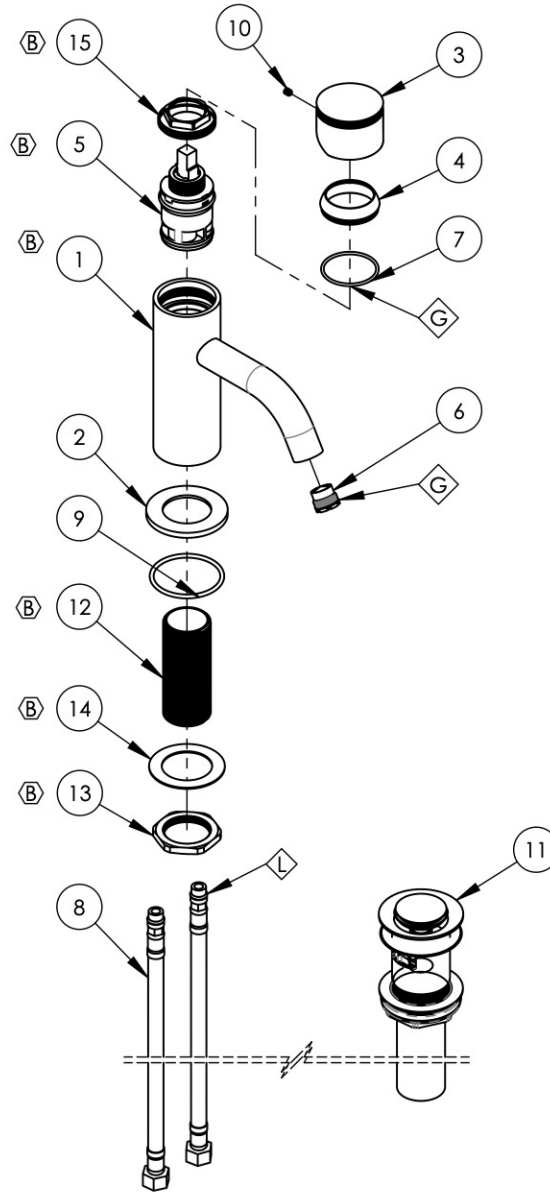


NOTE(S):
1. APPLY NSF COMPLIANT GREASE TO ANY O-RING,
SEALING JOINTS, AND/OR PIVOTAL POINTS.
2. APPLY NSF COMPLIANT LOCTITE TO THREADED AREA.



ITEM NO.	PART NUMBER	DESCRIPTION	QTY.
1	2-430/00	BODY, SPOUT, SINGLE HOLE LAV, BRAZE ASSY	1
2	11093/00	ESCUTCHEON BASE, CONTEMP. BASIC II	1
3	11095/00	HANDLE, KNURLED, SINGLE CTRL CONTEMP. BASIC II	1
4	11092/00	CAP, CONTEMP. BASIC II LAV	1
5	12371	CERAMIC CARTRIDGE, 35MM, CONNECTED PIPE TYPE	1
6	11430	AERATOR, CACHE TOM THUMB, PINK 1.2 GPM, M16.5X1.0, NEOPERL # 44.3260.450	1
7	90028	O-RING, 1-3/8"ID X 1/16"THK, AS-568-028	1
8	10665	HOSE, CONNECTOR, M8.1 x 3/8", 17" LG.	2
9	90132	O-RING, 1-3/4"ID X 3/32THK, AS-568-132	1
10	92008	SET SCREW, CUP POINT 8-32, 3/16" L.	1
11	3-545/00	BRASS PUSH TYPE DRAIN, W/ OVERFLOW & SMALL PLUG	1
12	10872	MOUNTING TUBE, SINGLE LEVER LAV	1
13	92313	HEX NUT, 1-1/4"-20 THREAD	1
14	92138	BRASS WASHER, THIN	1
15	12367	CARTRIDGE NUT, SINGLE HOLE LAV	1

D4	B	UPDATED COMPONENTS TO FIT CARTRIDGE	4/26/2024	VA
ZONE	REV.	DESCRIPTION	DATE	APPROVED
REVISIONS				

1261 LOGAN AVENUE
COSTA MESA, CALIFORNIA 92626
PHONE: 714.361.4800
FAX: 714.617.3120

PHYLIRICH®
Defining Luxury Since 1959

PROPRIETARY AND CONFIDENTIAL
THE INFORMATION CONTAINED IN THIS DRAWING
IS THE SOLE PROPERTY OF PHYLIRICH. ANY
REPRODUCTION IN PART OR AS A WHOLE
WITHOUT THE WRITTEN PERMISSION OF PHYLIRICH
IS PROHIBITED.
DO NOT SCALE DRAWING

**SINGLE CONTROL LAV., KNURLED
HANDLE, BASIC II**

SIZE A	ASM/PRT NO. 230-06/00	REV B
SCALE: 1:5	WEIGHT: lbs.	SHEET 1 OF 2