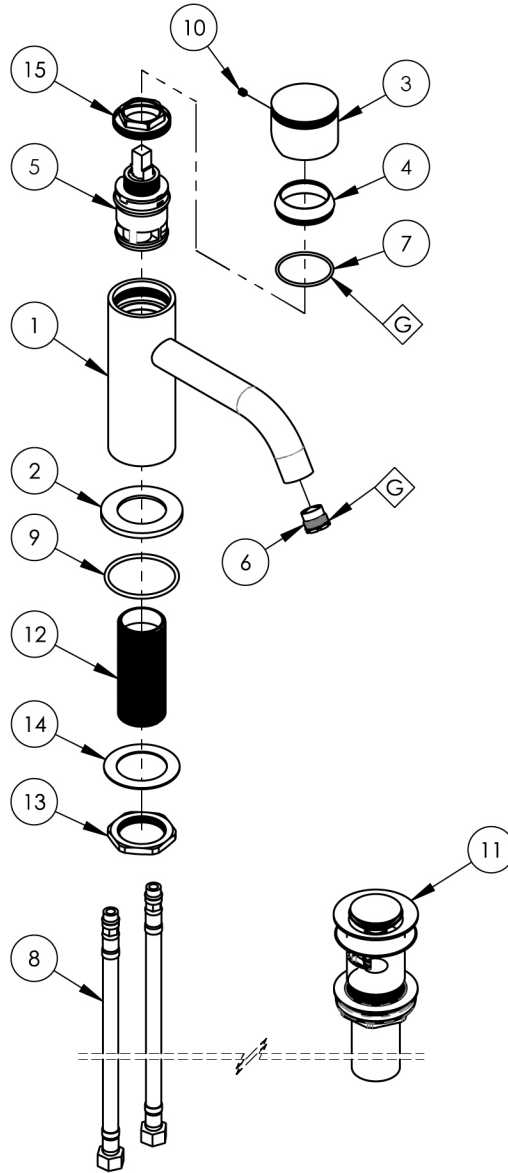


NOTE(S):

1. PART NUMBER, "/00" DENOTES PART SHALL HAVE FINISH.
2. APPLY NSF COMPLIANT GREASE TO ANY O-RING, SEALING JOINTS, AND/OR PIVOTAL POINTS.
3. APPLY NSF COMPLIANT LOCTITE TO THREADED AREA.
4. APPLY NSF COMPLIANT REMOVABLE (BLUE) LOCTITE TO THREADED AREA.
5. SILVER SOLDER JOINTS SHALL BE FULLY WETTED VIA CAPILLARY ACTION AND COMPLETELY NON-POROUS.



ITEM NO.	PART NUMBER	DESCRIPTION	QTY.
1	2-512/00	BODY & SPOUT, SINGLE HOLE LAV, 6", BRAZE ASSY	1
2	11093/00	ESCUTCHEON BASE, CONTEMP. BASIC II	1
3	11095/00	HANDLE, KNURLED, SINGLE CTRL CONTEMP. BASIC II	1
4	11092/00	CAP, CONTEMP. BASIC II LAV	1
5	12371	CERAMIC CARTRIDGE, 35MM, CONNECTED PIPE TYPE	1
6	11430	AERATOR, CACHE TOM THUMB, PINK 1.2 GPM, M16.5X1.0, NEOPERL # 44.3260.450	1
7	90028	O-RING, 1-3/8"ID X 1/16"THK, AS-568-028	1
8	10665	HOSE, CONNECTOR, M8.1 x 3/8", 17" LG.	2
9	90132	O-RING, 1-3/4"ID X 3/32THK, AS-568-132	1
10	92008	SET SCREW, CUP POINT 8-32, 3/16" L.	1
11	3-545/00	BRASS PUSH TYPE DRAIN, W/ OVERFLOW & SMALL PLUG	1
12	10872	MOUNTING TUBE, SINGLE LEVER LAV	1
13	92313	HEX NUT, 1-1/4"-20 THREAD	1
14	92138	BRASS WASHER, THIN	1
15	12367	CARTRIDGE NUT, SINGLE HOLE LAV	1

ZONE	REV.	DESCRIPTION	DATE	APPROVED
REVISIONS				

1261 LOGAN AVENUE
COSTA MESA, CALIFORNIA 92626
PHONE: 714.361.4800
FAX: 714.617.3120

PHYLIRICH[®]
Defining Luxury Since 1959

PROPRIETARY AND CONFIDENTIAL
THE INFORMATION CONTAINED IN THIS DRAWING
IS THE SOLE PROPERTY OF PHYLIRICH. ANY
REPRODUCTION IN PART OR AS A WHOLE
WITHOUT THE WRITTEN PERMISSION OF PHYLIRICH
IS PROHIBITED.
DO NOT SCALE DRAWING

SINGLE CONTROL LAV., KNURLED
HANDLE, 6", BASIC II

SIZE	ASM/PRT NO.	REV
A	230-06-6/00	B
SCALE: 1:5	WEIGHT: lbs.	SHEET 1 OF 2