

NOTE(S):
1. PART NUMBER, "/00" DENOTES PART SHALL HAVE FINISH.

2. APPLY NSF COMPLIANT GREASE TO ANY O-RING, SEALING JOINTS, AND/OR PIVOTAL POINTS.

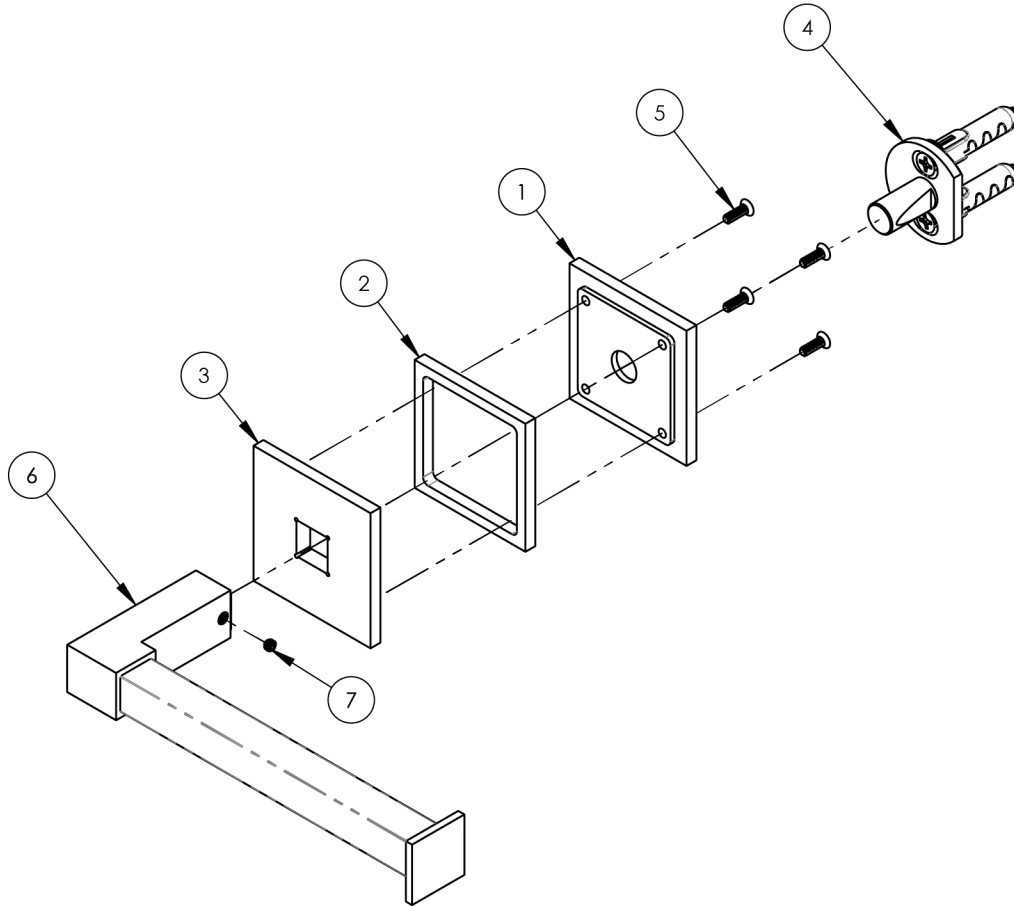
3. APPLY NSF COMPLIANT LOCTITE TO THREADED AREA.

4. APPLY NSF COMPLIANT REMOVABLE (BLUE) LOCTITE TO THREADED AREA.

5. SILVER SOLDER JOINTS SHALL BE FULLY WETTED VIA CAPILLARY ACTION AND COMPLETELY NON-POROUS.



ITEM NO.	PART NUMBER	DESCRIPTION	QTY.
1	12422/00	BASE BOTTOM, SQUARE, JOLIE	1
2	12423/00	BASE INSERT, SQUARE, JOLIE	1
3	12424/00	BASE TOP, SQUARE, JOLIE	1
4	2-264	WALL MOUNTING KIT	1
5	92434	SCREW, SS PHILLIPS FLAT HEAD W/ UNDERCUT 6-32 X 7/16" L	4
6	2-481/00	TOWEL HOLDER, POST ARM, SQUARE, BRAZE, JOLIE	1
7	92248	SET SCREW, CUP POINT 8-32 UNC, 1/8" L.	1



ZONE	REV.	DESCRIPTION	DATE	APPROVED
------	------	-------------	------	----------

REVISIONS

1261 LOGAN AVENUE
COSTA MESA, CALIFORNIA 92626
PHONE: 714.361.4800
FAX: 714.617.3120

PHYLIRICH[®]
Defining Luxury Since 1959

PROPRIETARY AND CONFIDENTIAL
THE INFORMATION CONTAINED IN THIS DRAWING
IS THE SOLE PROPERTY OF PHYLIRICH. ANY
REPRODUCTION IN PART OR AS A WHOLE
WITHOUT THE WRITTEN PERMISSION OF PHYLIRICH
IS PROHIBITED.
DO NOT SCALE DRAWING

TOWEL HOLDER, SQUARE, JOLIE

SIZE	ASM/PRT NO.	REV
A	222S-75/00	-
SCALE: 1:2.75	WEIGHT: lbs.	SHEET 1 OF 2