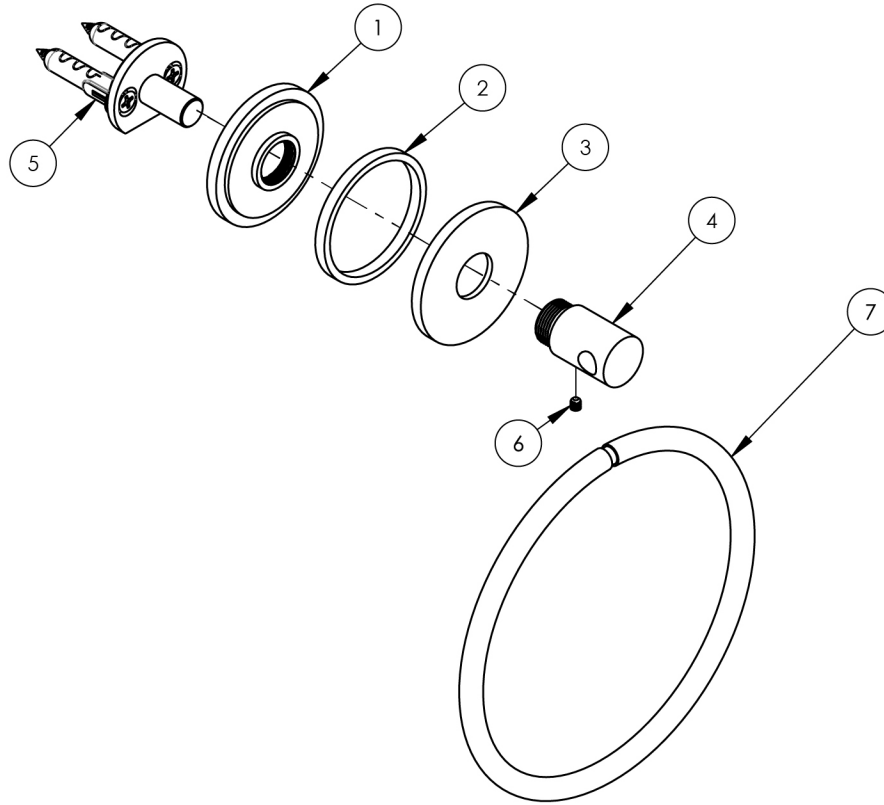


- NOTE(S):
1. PART NUMBER, "/00" DENOTES PART SHALL HAVE FINISH.
  2. APPLY NSF COMPLIANT GREASE TO ANY O-RING, SEALING JOINTS, AND/OR PIVOTAL POINTS.
  3. APPLY NSF COMPLIANT LOCTITE TO THREADED AREA.
  4. APPLY NSF COMPLIANT REMOVABLE (BLUE) LOCTITE TO THREADED AREA.
  5. SILVER SOLDER JOINTS SHALL BE FULLY WETTED VIA CAPILLARY ACTION AND COMPLETELY NON-POROUS.



ITEM NO.	PART NUMBER	DESCRIPTION	QTY.
1	12334/00	BASE BOTTOM, ROUND, ACCESSORIES, JOLIE	1
2	12335/00	CENTER RING, BASE, ROUND, ACCESORIES, JOLIE	1
3	12336/00	BASE TOP, ROUND, ACCERSSORIES, JOLIE	1
4	12415/00	POST, TOWEL RING, ROUND, JOLIE	1
5	2-264	WALL MOUNTING KIT	1
6	92008	SET SCREW, CUP POINT 8-32, 3/16" L.	1
7	11056/00	6" TOWEL RING	1



ZONE	REV.	DESCRIPTION	DATE	APPROVED
REVISIONS				

1261 LOGAN AVENUE  
COSTA MESA, CALIFORNIA 92626  
PHONE: 714.361.4800  
FAX: 714.617.3120

PHYLIRICH<sup>®</sup>  
Defining Luxury Since 1959

PROPRIETARY AND CONFIDENTIAL  
THE INFORMATION CONTAINED IN THIS DRAWING  
IS THE SOLE PROPERTY OF PHYLIRICH. ANY  
REPRODUCTION IN PART OR AS A WHOLE  
WITHOUT THE WRITTEN PERMISSION OF PHYLIRICH  
IS PROHIBITED.  
DO NOT SCALE DRAWING

TOWEL RING, ROUND, JOLIE

SIZE	ASM/PRT NO.	REV
A	222-75/00	-
SCALE: 1:3	WEIGHT: lbs.	SHEET 1 OF 2