

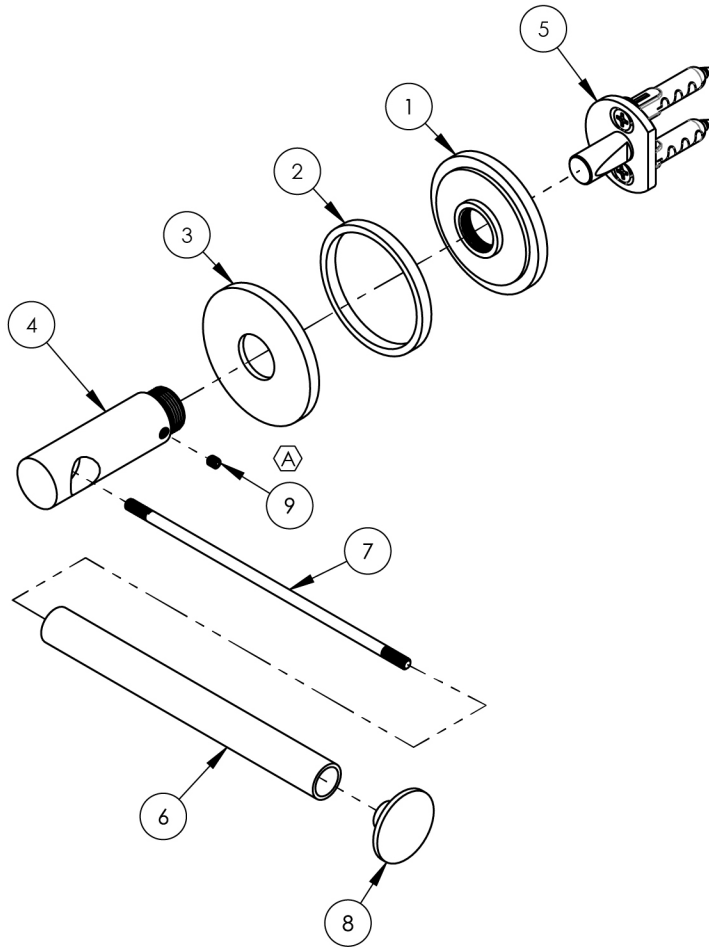
NOTE(S):
1. PART NUMBER, "/00" DENOTES PART SHALL HAVE FINISH.

2. APPLY NSF COMPLIANT GREASE TO ANY O-RING, SEALING JOINTS, AND/OR PIVOTAL POINTS.

3. APPLY NSF COMPLIANT LOCTITE TO THREADED AREA.

4. APPLY NSF COMPLIANT REMOVABLE (BLUE) LOCTITE TO THREADED AREA.

5. SILVER SOLDER JOINTS SHALL BE FULLY WETTED VIA CAPILLARY ACTION AND COMPLETELY NON-POROUS.



ITEM NO.	PART NUMBER	DESCRIPTION	QTY.
1	12334/00	BASE BOTTOM, ROUND, ACCESSORIES, JOLIE	1
2	12335/00	CENTER RING, BASE, ROUND, ACCESORIES, JOLIE	1
3	12336/00	BASE TOP, ROUND, ACCERSORIES, JOLIE	1
4	12333/00	POST, TP HOLDER, ROUND, JOLIE	1
5	2-264	WALL MOUNTING KIT	1
6	11059/00	BAR TUBE FOR TP HOLDER, 501 SERIES	1
7	12374	3/16" DIA. ROD WITH THREAD FOR TP HOLDER	1
8	12375/00	TP HOLDER, FINIAL, JOLIE	1
9	92008	SET SCREW, CUP POINT 8-32, 3/16" L.	1

C4	A	UPDATED SET SCREW	10/17/2024	VA
ZONE	REV.	DESCRIPTION	DATE	APPROVED
REVISIONS				

1261 LOGAN AVENUE COSTA MESA, CALIFORNIA 92626 PHONE: 714.361.4800 FAX: 714.617.3120	PHYLRICH® Defining Luxury Since 1959	PROPRIETARY AND CONFIDENTIAL THE INFORMATION CONTAINED IN THIS DRAWING IS THE SOLE PROPERTY OF PHYLRICH. ANY REPRODUCTION IN PART OR AS A WHOLE WITHOUT THE WRITTEN PERMISSION OF PHYLRICH IS PROHIBITED. DO NOT SCALE DRAWING	TP HOLDER, ROUND, SINGLE POST, JOLIE	SIZE	ASM/PRT NO.	REV
				A	222-74/00	A

SCALE: 1:3

WEIGHT: lbs.

SHEET 1 OF 2