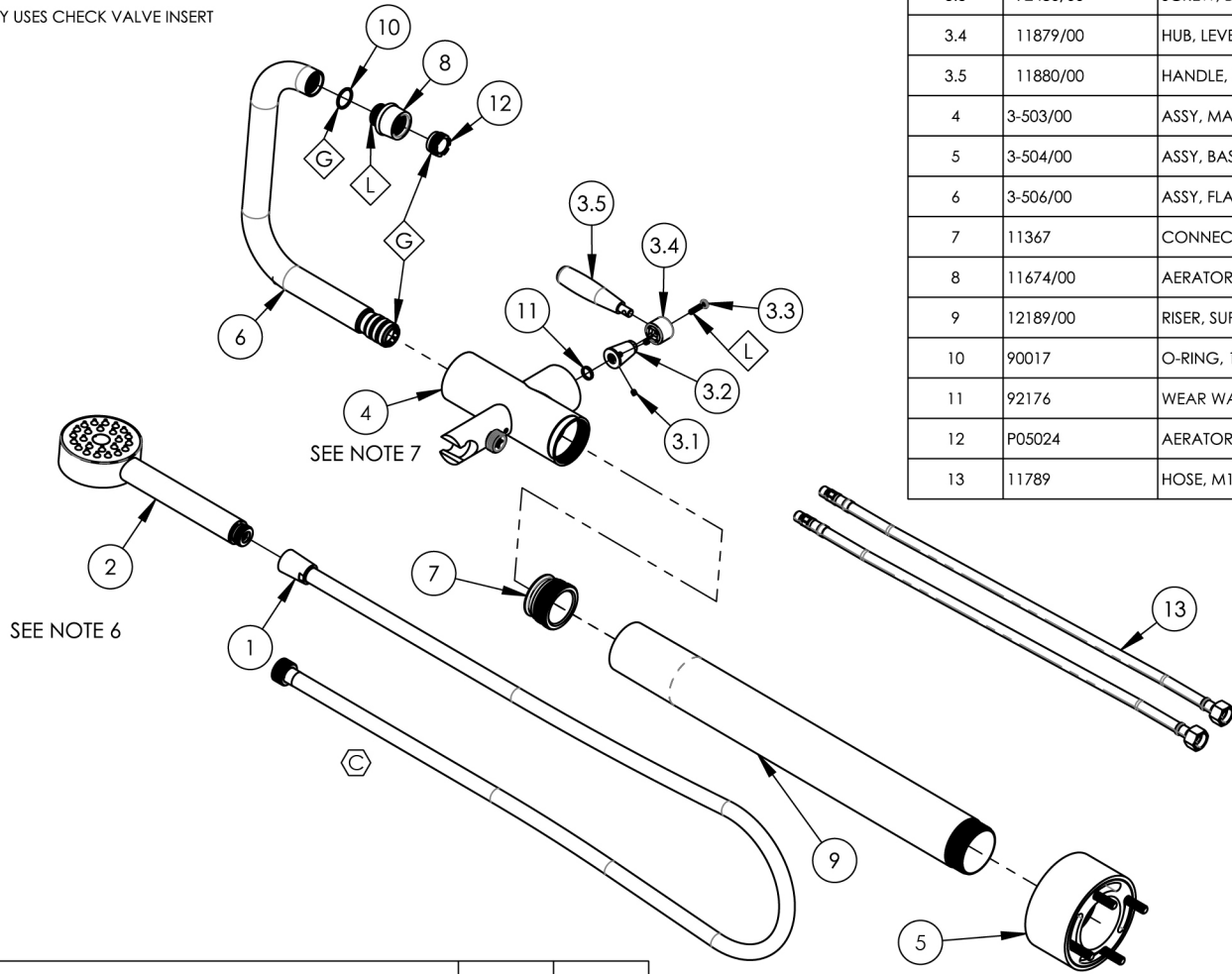


- NOTE(S):
- PART NUMBER, "/00" DENOTES PART SHALL HAVE FINISH.
 - APPLY NSF COMPLIANT GREASE TO ANY O-RING, SEALING JOINTS, AND/OR PIVOTAL POINTS.
 - APPLY NSF COMPLIANT LOCTITE TO THREADED AREA.
 - APPLY NSF COMPLIANT REMOVABLE (BLUE) LOCTITE TO THREADED AREA.
 - SILVER SOLDER JOINTS SHALL BE FULLY WETTED VIA CAPILLARY ACTION AND COMPLETELY NON-POROUS.
 - HAND SHOWER USES CHECK VALVE "31.4153.0" (10672).
 - FLOOR MOUNT MAIN BODY USES CHECK VALVE INSERT "31.4210.0" (12229).



ITEM NO.	PART NUMBER	DESCRIPTION	QTY.
1	3-049-52/00	ASSY, HOSE KIT, HANDSHOWER	1
2	3-782/00	HAND SHOWER, ROUND, SINGLE FUNCTION	1
3	3-303/00	HANDLE LEVER W/ HARDWARE, WORKS	1
3.1	92008	SET SCREW, CUP POINT 8-32, 3/16" L.	2
3.2	11875/00	POST FOR HANDLE, WORKS	1
3.3	92480/00	SCREW, BRASS, PAN, PHILLIPS 8-32 X 3/4" L	1
3.4	11879/00	HUB, LEVER HANDLE, WORKS	1
3.5	11880/00	HANDLE, LEVER, WORKS	1
4	3-503/00	ASSY, MAIN BODY, TUB-FILLER, W/ SHOWER HOOK	1
5	3-504/00	ASSY, BASE, FLOOR MOUNT TUB FILLER	1
6	3-506/00	ASSY, FLAT/LOW SQUARE SPOUT, FLOOR MOUNT TUB FILLER	1
7	11367	CONNECTOR, BODY TO RISER	1
8	11674/00	AERATOR HOUSING, RT SPOUT, TRANS. HEX MODERN	1
9	12189/00	RISER, SUPPLY TUBE, SHORT	1
10	90017	O-RING, 11/16"ID X 13/16"OD X 1/16"THK, AS-568-017	1
11	92176	WEAR WASHER	1
12	P05024	AERATOR CACHE COIN SLOT, M21.5X1.0 FULL FLOW	1
13	11789	HOSE, M10 X 3/8" GAS X 19"	2

B4	C	REPLACED HOSE FOR SHORTER VERSION	6/28/2024	FVM
ZONE	REV.	DESCRIPTION	DATE	APPROVED

REVISIONS

1261 LOGAN AVENUE
COSTA MESA, CALIFORNIA 92626
PHONE: 714.361.4800
FAX: 714.617.3120

PHYLIRICH[®]
Defining Luxury Since 1959

PROPRIETARY AND CONFIDENTIAL
THE INFORMATION CONTAINED IN THIS DRAWING IS THE SOLE PROPERTY OF PHYLIRICH. ANY REPRODUCTION IN PART OR AS A WHOLE WITHOUT THE WRITTEN PERMISSION OF PHYLIRICH IS PROHIBITED.
DO NOT SCALE DRAWING

FLOOR MOUNT TUB FILLER W/
HANDSHOWER SET, SINGLE HOLE SHORT,
LOW SPOUT W/ LEVER, WORKS

SIZE A	ASM/PRT NO. 220-47-03/00	REV C
SCALE: 1:7	WEIGHT: lbs.	SHEET 1 OF 2