

NOTE(S):
1. PART NUMBER, "/00" DENOTES PART SHALL HAVE FINISH.

2. APPLY NSF COMPLIANT GREASE TO ANY O-RING, SEALING JOINTS, AND/OR PIVOTAL POINTS.

3. APPLY NSF COMPLIANT LOCTITE TO THREADED AREA.

4. APPLY NSF COMPLIANT REMOVABLE (BLUE) LOCTITE TO THREADED AREA.

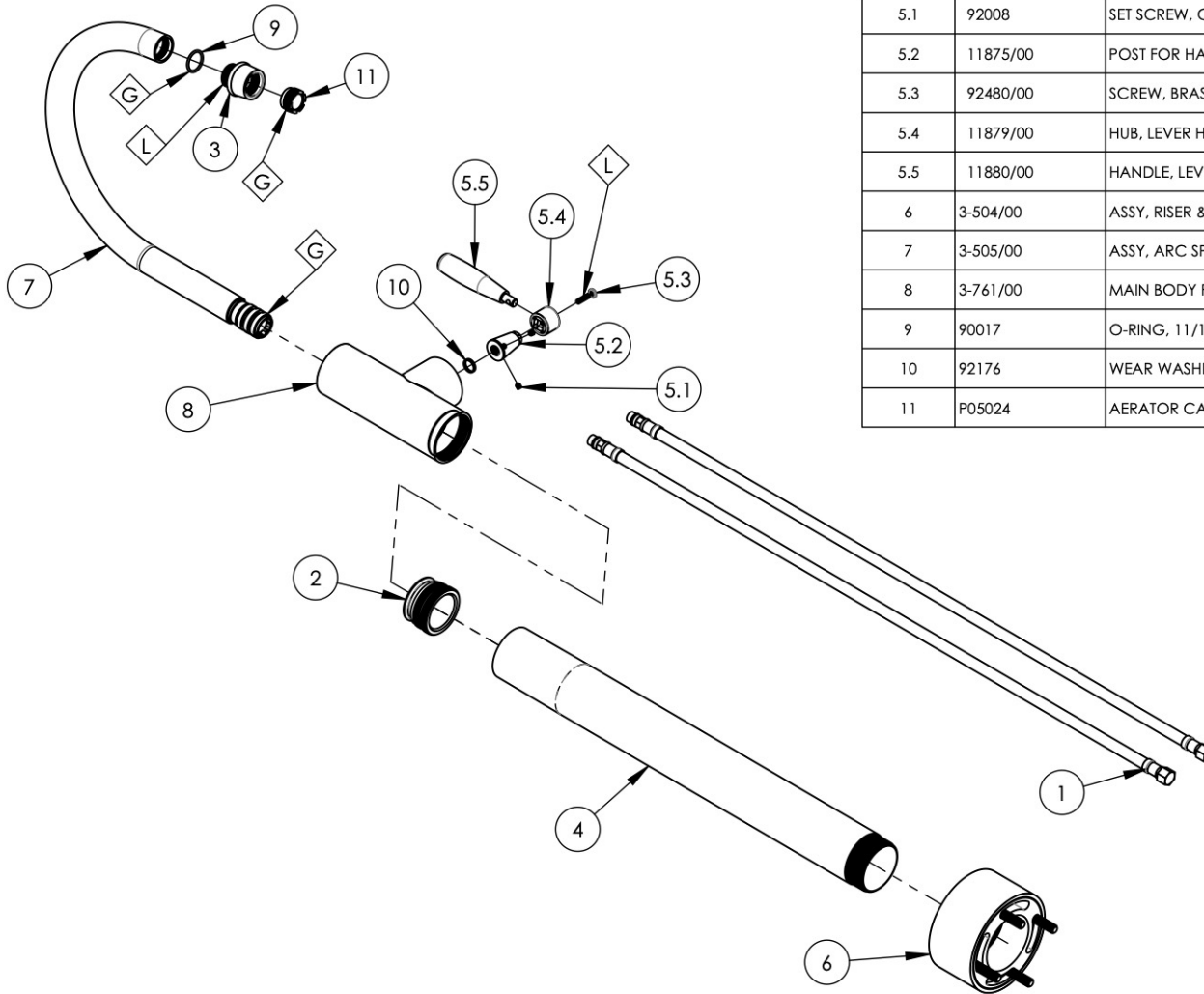
5. SILVER SOLDER JOINTS SHALL BE FULLY WETTED VIA CAPILLARY ACTION AND COMPLETELY NON-POROUS.

G

L

B

S



ITEM NO.	PART NUMBER	DESCRIPTION	QTY.
1	11366	HOSE, SUPPLY, FREE STANDING TUB FILLER	2
2	11367	CONNECTOR, BODY TO RISER	1
3	11674/00	AERATOR HOUSING, RT SPOUT, TRANS. HEX MODERN	1
4	12189/00	RISER, SUPPLY TUBE, SHORT	1
5	3-303/00	HANDLE LEVER W/ HARDWARE, WORKS	1
5.1	92008	SET SCREW, CUP POINT 8-32, 3/16" L.	2
5.2	11875/00	POST FOR HANDLE, WORKS	1
5.3	92480/00	SCREW, BRASS, PAN, PHILLIPS 8-32 X 3/4" L	1
5.4	11879/00	HUB, LEVER HANDLE, WORKS	1
5.5	11880/00	HANDLE, LEVER, WORKS	1
6	3-504/00	ASSY, RISER & BASE, FLOOR MOUNT TUB FILLER	1
7	3-505/00	ASSY, ARC SPOUT, FLOOR MOUNT TUB FILLER	1
8	3-761/00	MAIN BODY FLOOR MOUNT TUB FILLER, LESS HOOK	1
9	90017	O-RING, 11/16"ID X 13/16"OD X 1/16"THK, AS-568-017	1
10	92176	WEAR WASHER	1
11	P05024	AERATOR CACHE COIN SLOT, M21.5X1.0 FULL FLOW	1

ZONE	REV.	DESCRIPTION	DATE	APPROVED
REVISIONS				

1261 LOGAN AVENUE
COSTA MESA, CALIFORNIA 92626
PHONE: 714.361.4800
FAX: 714.617.3120

PHYLIRICH[®]
Defining Luxury Since 1959

PROPRIETARY AND CONFIDENTIAL
THE INFORMATION CONTAINED IN THIS DRAWING IS THE SOLE PROPERTY OF PHYLIRICH. ANY REPRODUCTION IN PART OR AS A WHOLE WITHOUT THE WRITTEN PERMISSION OF PHYLIRICH IS PROHIBITED.
DO NOT SCALE DRAWING

**FLOOR MOUNT TUB FILLER, SINGLE HOLE
SHORT, HIGH SPOUT W/ LEVER, WORKS**

SIZE A	ASM/PRT NO. 220-45-04/00	REV -
SCALE: 1:6.5	WEIGHT: lbs.	SHEET 1 OF 2