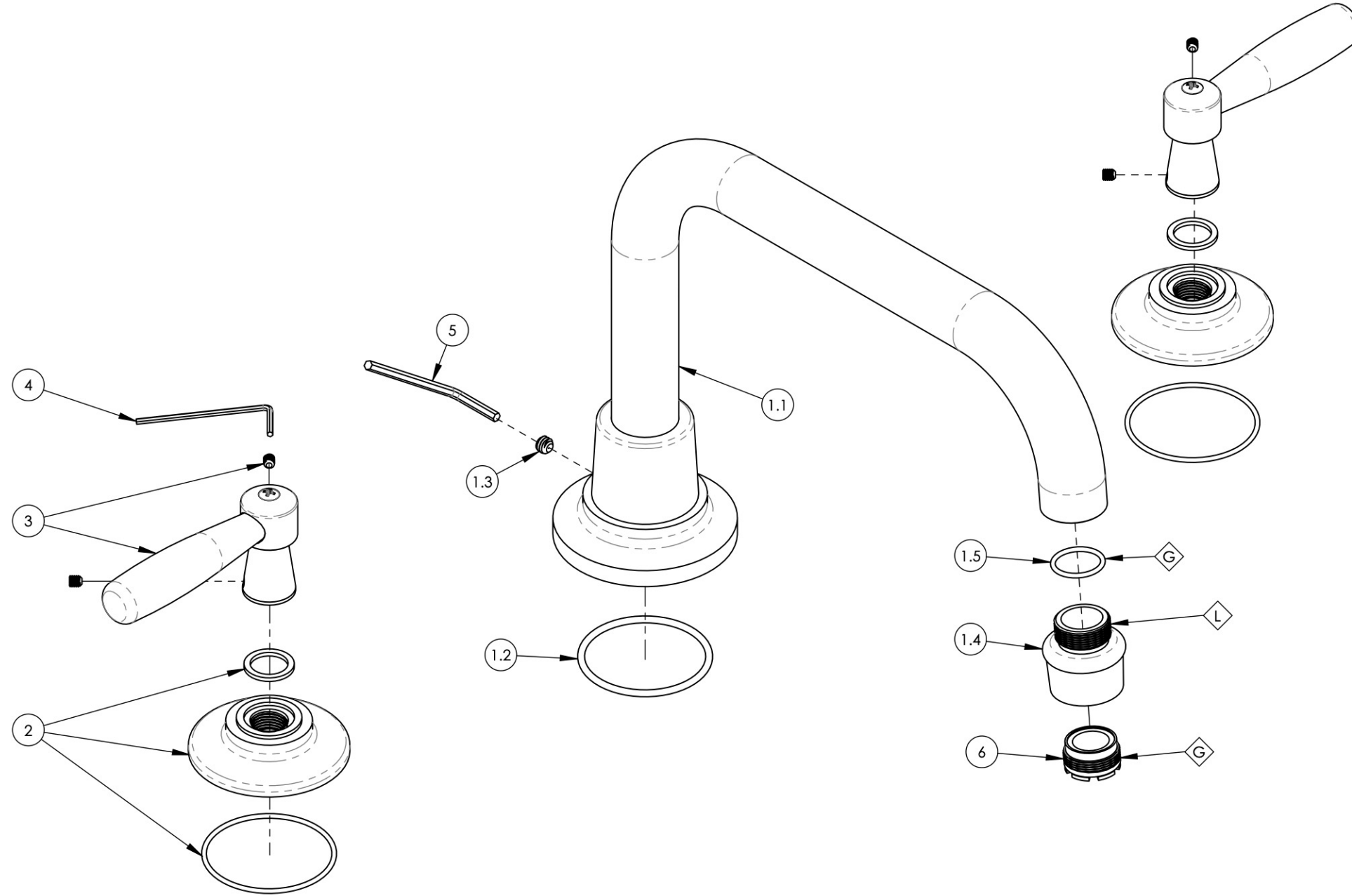


- NOTE(S):
1. PART NUMBER, "/00" DENOTES PART SHALL HAVE FINISH.
  2. APPLY NSF COMPLIANT GREASE TO ANY O-RING, SEALING JOINTS, AND/OR PIVOTAL POINTS.
  3. APPLY NSF COMPLIANT LOCTITE TO THREADED AREA.
  4. APPLY NSF COMPLIANT REMOVABLE (BLUE) LOCTITE TO THREADED AREA.
  5. SILVER SOLDER JOINTS SHALL BE FULLY WETTED VIA CAPILLARY ACTION AND COMPLETELY NON-POROUS.



ITEM NO.	PART NUMBER	DESCRIPTION	QTY.
1	3-297/00	SPOUT, DECK TUB, LOW FLAT, TRADITIONAL, WORKS	1
1.1	2-349/00	SPOUT, DECK TUB, LOW FLAT, TRADITIONAL, BRAZE, WORKS	1
1.2	90133	1 3/4" O-RING, 1-13/16" ID X 3/32" THK, AS-568-133	1
1.3	92391	SET SCREW, CUP PT, 1/4"-20 X 3/16" L	1
1.4	11674/00	AERATOR HOUSING, RT SPOUT, TRANS. HEX MODERN	1
1.5	90017	O-RING, 1 1/16" ID X 13/16" OD X 1/16" THK, AS-568-017	1
2	3-299/00	ESCUTCHEON BASE FOR HANDLE, WORKS	2
3	3-303/00	HANDLE LEVER W/ HARDWARE, WORKS	2
4	92021	HEX KEY 5/64, FOR 8-32 SET SCREW	1
5	92216	HEX L-KEY 1/8" HEX X 2-5/16" L	1
6	P05024	AERATOR CACHE COIN SLOT, M21.5X1.0 FULL FLOW	1



ZONE	REV.	DESCRIPTION	DATE	APPROVED
REVISIONS				

1261 LOGAN AVENUE  
COSTA MESA, CALIFORNIA 92626  
PHONE: 714.361.4800  
FAX: 714.617.3120

**PHYLIRICH**<sup>®</sup>  
Defining Luxury Since 1959

**PROPRIETARY AND CONFIDENTIAL**  
THE INFORMATION CONTAINED IN THIS DRAWING IS THE SOLE PROPERTY OF PHYLIRICH. ANY REPRODUCTION IN PART OR AS A WHOLE WITHOUT THE WRITTEN PERMISSION OF PHYLIRICH IS PROHIBITED.  
**DO NOT SCALE DRAWING**

**DECK TUB SET, LOW FLAT SPOUT W/  
LEVER, WORKS**

SIZE <b>B</b>	ASM/PRT NO. <b>220-43/00</b>	REV -
SCALE: 1:2	WEIGHT: lbs.	SHEET 1 OF 2