

5

4

3

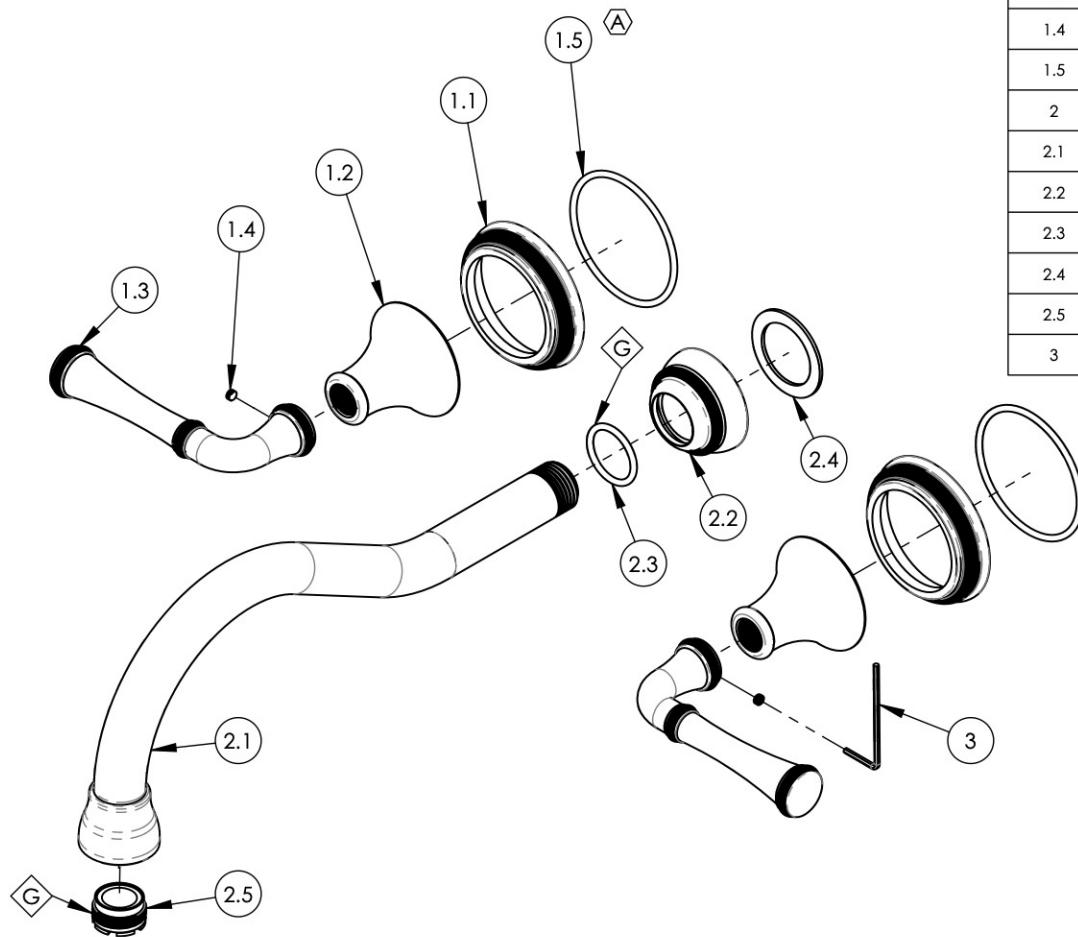
2

1

NOTE(S):  
 1. APPLY NSF COMPLIANT GREASE TO ANY O-RING, SEALING JOINTS, AND/OR PIVOTAL POINTS.



ITEM NO.	PART NUMBER	DESCRIPTION	QTY.
1	3-317/00	LEVER HANDLE, COINED SERIES	2
1.1	10978/00	ESCUTCHEON HANDLE BASE COINED, 3RING, COINED SERIES	1
1.2	10972/00	HUB, TRANSITIONAL 3RING	1
1.3	10977/00	HANDLE, STRAIGHT LEVER COINED, 3RING	1
1.4	92163	SET SCREW, CONE PT 8-32 X 1/8"L	1
1.5	90138	O-RING, 2 1/8"ID X 3/32"THK., AS-568-138	1
2	3-319/00	WALL TUB SPOUT, COINED SERIES	1
2.1	2-107/00	WALL LAV SPOUT, W/ AERATOR HOUSING. M21.5X1.0	1
2.2	11116/00	TUBULAR WALL SPOUT FLANGE, COINED SERIES	1
2.3	90118	O-RING, 7/8"ID X 1-1/16"OD X 3/32"THK, AS-568-118	1
2.4	P35017	WASHER FOR WALL FLANGE, 3RING 205	1
2.5	P05024	AERATOR CACHE COIN SLOT, M21.5X1.0 FULL FLOW	1
3	P39001	HEX KEY 5/64, FOR 8-32 SET SCREW	1



ALL	A	UPDATE TEMPLATE, ADD O-RINGS/ CALL OUTS, SEPARATE HEX KEY FROM SUB.	4/9/2020	AMM
ZONE	REV.	DESCRIPTION	DATE	APPROVED
REVISIONS				

1261 LOGAN AVENUE  
 COSTA MESA, CALIFORNIA 92626  
 PHONE: 714.361.4800  
 FAX: 714.617.3120

**PHYLIRICH**<sup>®</sup>  
 Defining Luxury Since 1959

**PROPRIETARY AND CONFIDENTIAL**  
 THE INFORMATION CONTAINED IN THIS DRAWING IS THE SOLE PROPERTY OF PHYLIRICH. ANY REPRODUCTION IN PART OR AS A WHOLE WITHOUT THE WRITTEN PERMISSION OF PHYLIRICH IS PROHIBITED.

-	-	INTERPRET GEOMETRIC DIMENSIONING & TOLERANCING IN ACCORDANCE WITH ASME Y14.5-2009 & ASME Y14.41-2003 STANDARDS, UNLESS OTHERWISE SPECIFIED. DIMENSIONS ARE IN INCHES. TOLERANCES ARE:		
NEXT ASSY	USED ON	<b>FRACTIONS</b> ±1/16"	<b>DECIMALS</b> X.X: ±.1 X.XX: ±.01 X.XXX: ±.005	<b>ANGULAR</b> ±2°
APPLICATION		MATERIAL	NAME	DATE
FINISH		DRAWN	LLO	9/23/2015
<b>DO NOT SCALE DRAWING</b>		CHECKED	GRE	

**WALL TUB SET, COINED SERIES**

SIZE	ASM/PRT NO.	REV
<b>A</b>	208-56/00	<b>A</b>
SCALE: 1:3	WEIGHT: lbs.	SHEET 1 OF 2

5

4

3

2

1