

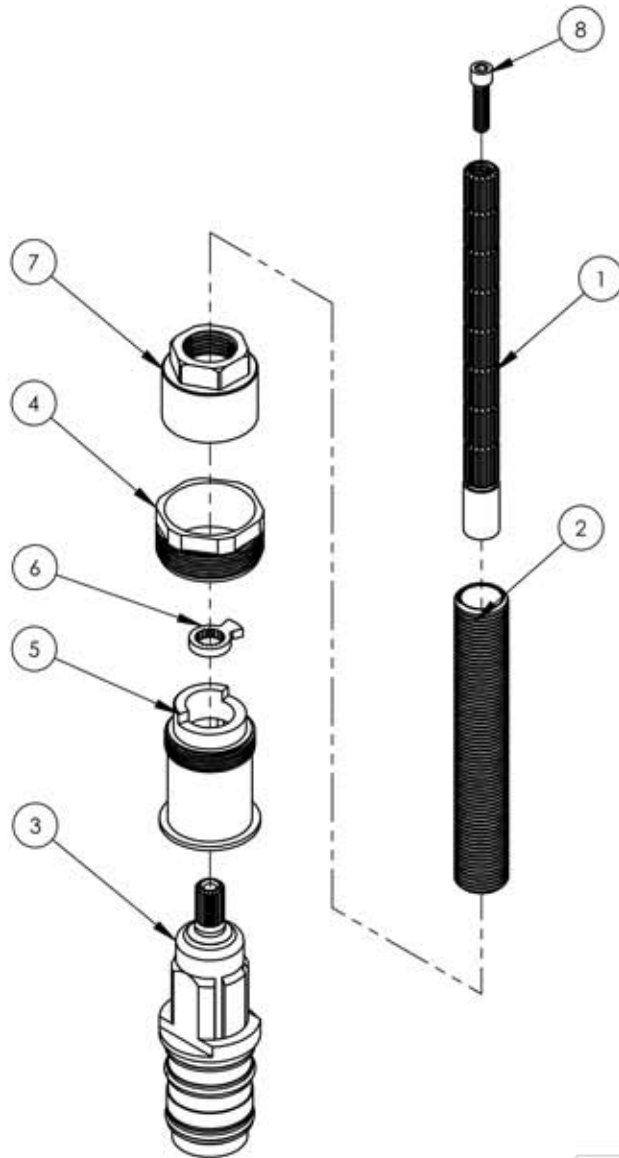
A

B

C

D

E



ITEM NO.	PART NUMBER	DESCRIPTION	QTY.
1	10054	STEM EXTENSION, 20PT INT. TO 16PT LONG EXT. BROACH	1
2	10209	SHANK, NIPPLE THREAD ALL 9/16"-20UN WITH .433"ID	1
3	10625	CARTRIDGE VALVE, MINI THERMO	1
4	11318	RETAINER NUT FOR MINI THERM CARTRIDGE	1
5	11319	CARTRIDGE RETAINER SLEEVE, MINI THERM	1
6	11320	SAFETY AND MECHANICAL STOP, MINI THERM	1
7	11321	CARTRIDGE RETAINER NUT	1
8	92015	SCREW, SOCKET HEAD CAP, M4 THRD. 16MM LENGTH	1

ZONE	REV.	DESCRIPTION	DATE	APPROVED
REVISIONS				

1261 LOGAN AVENUE COSTA MESA, CALIFORNIA 92626 PHONE: 714.361.4800 FAX: 714.617.3120		<h1>PHYLORICH®</h1> <p>Defining Luxury Since 1959</p>	<b>PROPRIETARY AND CONFIDENTIAL</b> <small>THE INFORMATION CONTAINED IN THIS DRAWING IS THE SOLE PROPERTY OF RSS MANUFACTURING. ANY REPRODUCTION IN PART OR AS A WHOLE WITHOUT THE WRITTEN PERMISSION OF RSS MANUFACTURING IS PROHIBITED.</small>
---	--	---	--

NEXT ASSY		USED ON		INTERPRET GEOMETRIC DIMENSIONING & TOLERANCING IN ACCORDANCE WITH ASME Y14.5-2009 & ASME Y14.41-2003 STANDARDS. UNLESS OTHERWISE SPECIFIED, DIMENSIONS ARE IN INCHES. TOLERANCES ARE: FRACTIONS ±1/64"    DECIMALS X.X: ±.1    ANGULAR X.XX: ±.01    X.XXX: ±.005		
APPLICATION		MATERIAL		NAME    DATE		
FINISH		DRAWN		LLO    7/29/2015		
DO NOT SCALE DRAWING		CHECKED		GRE		

REPAIR KIT FOR 1/2" MINI THERM.

SIZE	ASM/PRT NO.	REV
<b>A</b>	2-173	-

SCALE: 1:2	WEIGHT: lbs.	SHEET 1 OF 1
------------	--------------	--------------

5

4

3

2

1