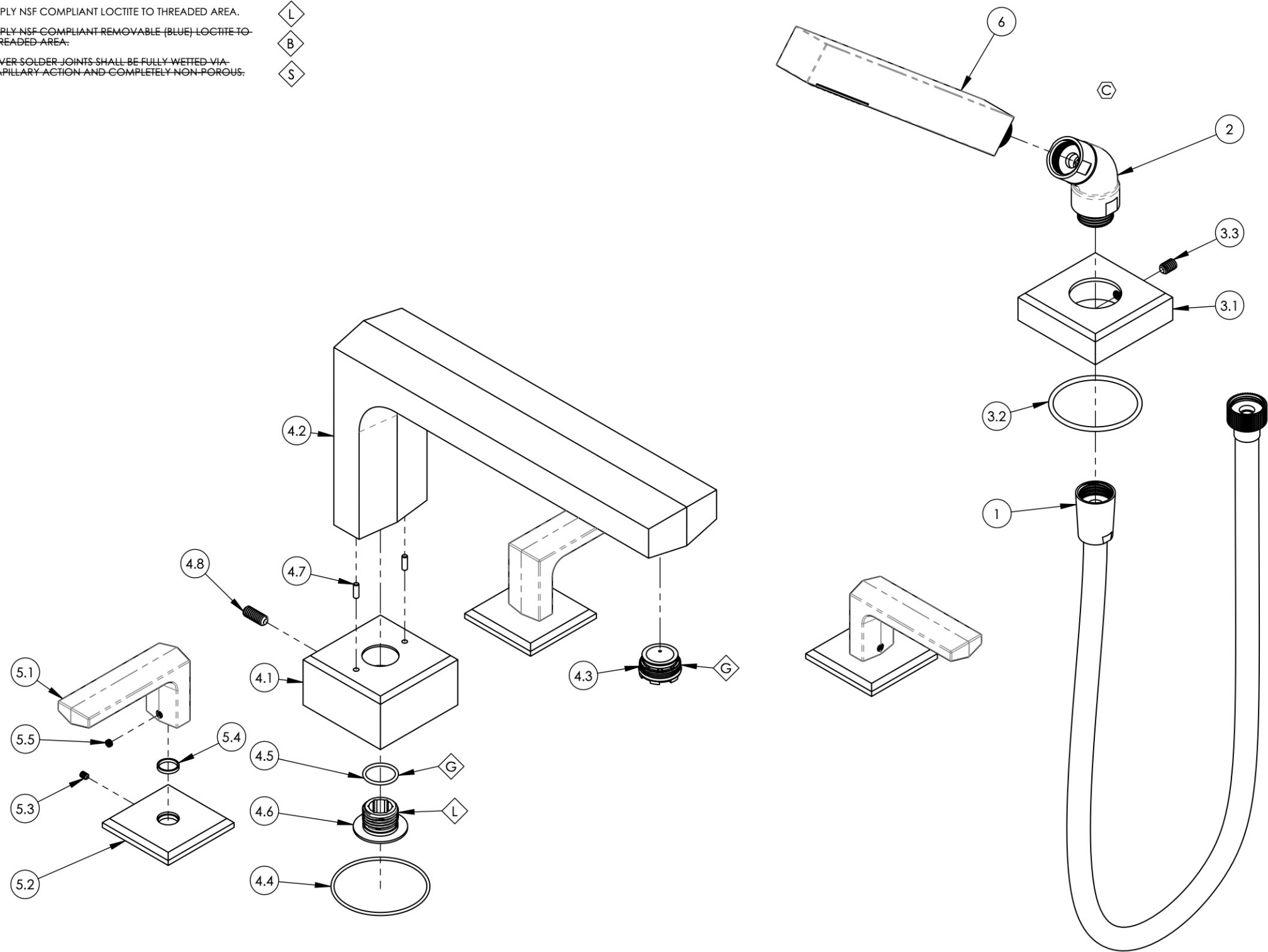


NOTE(S):

1. PART NUMBER, "/00" DENOTES PART SHALL HAVE FINISH.
2. APPLY NSF COMPLIANT GREASE TO ANY O-RING, SEALING JOINTS, AND/OR PIVOTAL POINTS.
3. APPLY NSF COMPLIANT LOCTITE TO THREADED AREA.
4. APPLY NSF COMPLIANT REMOVABLE (BLUE) LOCTITE TO THREADED AREA.
5. SILVER SOLDER JOINTS SHALL BE FULLY WETTED VIA CAPILLARY ACTION AND COMPLETELY NON-POROUS.



ITEM NO.	PART NUMBER	DESCRIPTION	QTY.
1	3-049/00	ASSY, HOSE KIT, HANDSHOWER	1
2	3-050/00	ELBOW ASSEMBLY	1
3	3-217/00	ESCUTCHEON BASE, HANDSHOWER, DIAMA	1
3.1	11763/00	ESCUTCHEON BASE, DECK TUB, HANDSHOWER, DIAMA	1
3.2	90135	O-RING, 1-15/16"ID X 3/32"THK, AS-568-135	1
3.3	92173	SET SCREW, CUP PT, 1/4"-20 X 3/8" L	1
4	3-592/00	ASSY, SPOUT, DECK TUB, DIAMA	1
4.1	11767/00	ESCUTCHEON, SPOUT, DECK TUB, DIAMA	1
4.2	11774/00	SPOUT, DECK TUB, DIAMA	1
4.3	P05051	AERATOR, CACHE COINED SLOT M24X1.0 FULL FLOW	1
4.4	90034	O-RING, 2-1/8"ID X 2-1/4"OD X 1/16"THK, AS-568-034	1
4.5	90017	O-RING, 11/16"ID X 13/16"OD X 1/16"THK, AS-568-017	1
4.6	11220	SPUD SCREW, 1/2"-NPSM CONNECTOR	1
4.7	92158	DOWEL PIN, 1/8" X 3/8"L	2
4.8	92262	SET SCREW, CUP PT 1/4"-20 X 5/8"L	1
5	3-596/00	ASSY, LEVER HANDLE, DIAMA	3
5.1	11769/00	LEVER HANDLE, DIAMA	1
5.2	11764/00	ESCUTCHEON, HANDLE, DIAMA	1
5.3	92005	SET SCREW, CUP PT 6-32 UNC THREAD 3/16"L	1
5.4	92176	WEAR WASHER	1
5.5	92163	SET SCREW, CONE PT 8-32 X 1/8"L	1
6	3-600/00	HAND SHOWER, SQUARE, MODERN	1

D4	C	REMOVE HAND SHOWER SUBASSY	2/23/2021	AMM
ZONE	REV.	DESCRIPTION	DATE	APPROVED
REVISIONS				

1261 LOGAN AVENUE
COSTA MESA, CALIFORNIA 92626
PHONE: 714.361.4800
FAX: 714.617.3120

PHYLIRICH
Defining Luxury Since 1959

PROPRIETARY AND CONFIDENTIAL
THE INFORMATION CONTAINED IN THIS DRAWING IS THE SOLE PROPERTY OF PHYLIRICH. ANY REPRODUCTION IN PART OR AS A WHOLE WITHOUT THE WRITTEN PERMISSION OF PHYLIRICH IS PROHIBITED.
DO NOT SCALE DRAWING

**DECK TUB, LEVER HANDLES,
RECTANGULAR HAND SHOWER, DIAMA**

SIZE B	ASM/PRT NO. 184-49/00	REV C
SCALE: 1:2.75	WEIGHT: lbs.	SHEET 1 OF 2