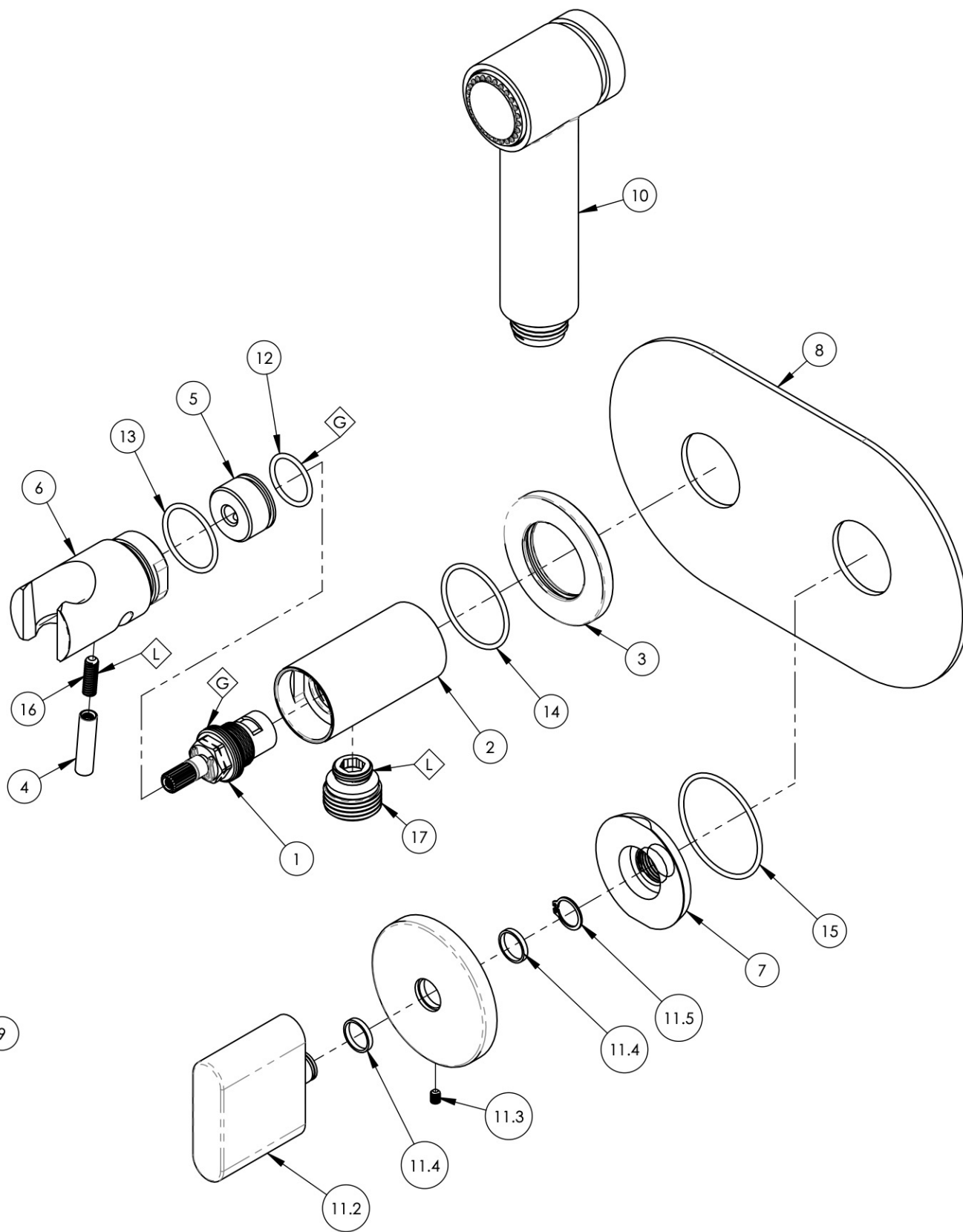
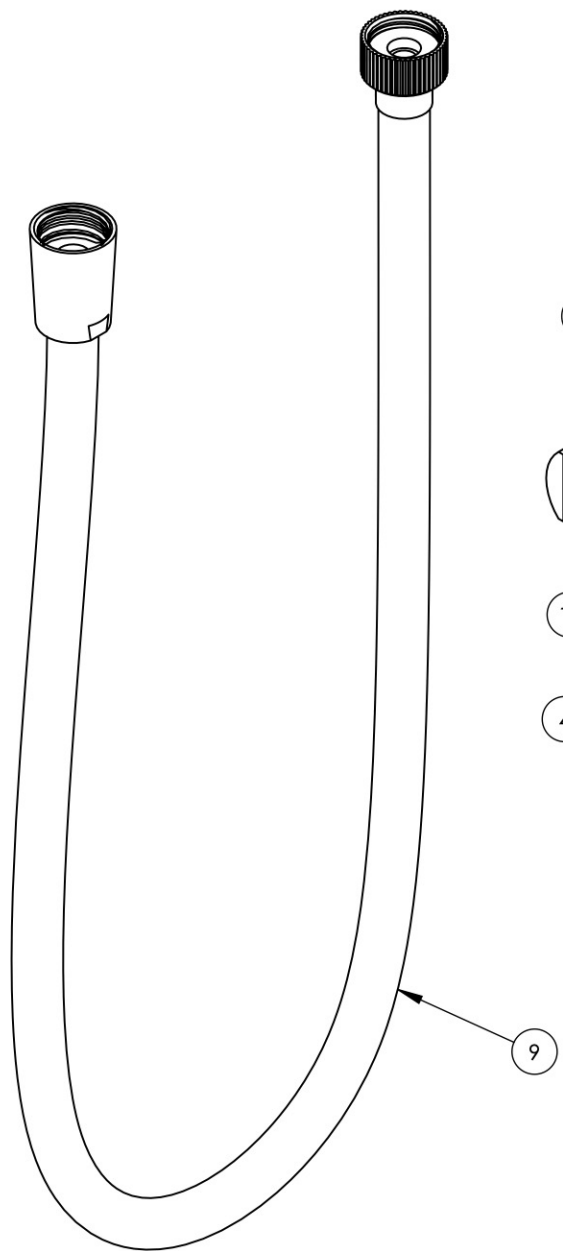


NOTE(S):

1. APPLY NSF COMPLIANT GREASE TO ANY O-RING, SEALING JOINTS, AND/OR PIVOTAL POINTS.



2. APPLY NSF COMPLIANT LOCTITE TO THREADED AREA.



ITEM NO.	PART NUMBER	DESCRIPTION	QTY.
1	10739	CARTRIDGE, VALVE 3/8" G RIGHT CLOSING	1
2	10859/00	BODY, HANDSHOWER HOLDER W/ INTEGRATED VOL. CTRL.	1
3	10860/00	ESCUTCHEON, FLANGE	1
4	10861/00	HANDLE, LEVER 10-24 UNC	1
5	10862/00	HIDDEN HUB, HANDSHOWER VOL. CTRL.	1
6	10863/00	SHOWER HOOK, INTEGRATED HANDLE	1
7	11003	SLEEVE MOUNT, WALL MT WIDESPREAD	1
8	11817/00	TRIM PLATE, WALL, 2 HOLE BIDET, ROND	1
9	3-049/00	ASSY. HOSE KIT, HANDSHOWER	1
10	3-410/00	ASSY. HAND SPRAY	1
11	3-584/00	ASSY. BLADE HANDLE, ROND	1
11.1	11749/00	ESCUTCHEON, HANDLE, ROND	1
11.2	11748/00	HANDLE, BLADE, ROND	1
11.3	92005	SET SCREW, CUP PT 6-32 UNC THREAD 3/16"L	1
11.4	92176	WEAR WASHER	2
11.5	92177	RETAINING RING, 7/16" SHAFT	1
12	90017	O-RING, 11/16" ID X 13/16" OD X 1/16" THK, AS-568-017	1
13	90021	O-RING, 15/16" ID X 1-1/16" OD X 1/16" THK, AS-568-021	1
14	90025	O-RING, 1-3/16" ID X 1/16" THK, AS-568-025	1
15	90029	O-RING, 1-5/8" ID X 1-3/4" OD X 1/16" THK, AS-568-029	1
16	92152	SET SCREW, CUP PT. 10-24 UNC X 5/8"L	1
17	P18011/00	CONNECTOR OUTLET 1/2", HOUSING OV10	1

ALL	A	UPDATE TEMPLATE, ADD CALL OUTS	6/8/2020	AMM
ZONE	REV.	DESCRIPTION	DATE	APPROVED
REVISIONS				

1261 LOGAN AVENUE  
COSTA MESA, CALIFORNIA 92626  
PHONE: 714.361.4800  
FAX: 714.617.3120

**PHYLIRICH**<sup>®</sup>  
Defining Luxury Since 1959

**PROPRIETARY AND CONFIDENTIAL**  
THE INFORMATION CONTAINED IN THIS DRAWING IS THE SOLE PROPERTY OF PHYLIRICH. ANY REPRODUCTION IN PART OR AS A WHOLE WITHOUT THE WRITTEN PERMISSION OF PHYLIRICH IS PROHIBITED.

NEXT ASSY	USED ON	FRACTIONS ±1/16"	DECIMALS X.X: ±.1 X.XX: ±.01 X.XXX: ±.005	ANGULAR ±2°
APPLICATION		MATERIAL	NAME	DATE
FINISH		DRAWN	MAF	4/9/2019
DO NOT SCALE DRAWING		CHECKED		

<b>TRIM, WALL MOUNTED BIDET, BLADE HANDLE, ROND</b>		
SIZE	ASM/PRT NO.	REV
<b>B</b>	183-64/00	<b>A</b>
SCALE: 1:3.25	WEIGHT: lbs.	SHEET 1 OF 2